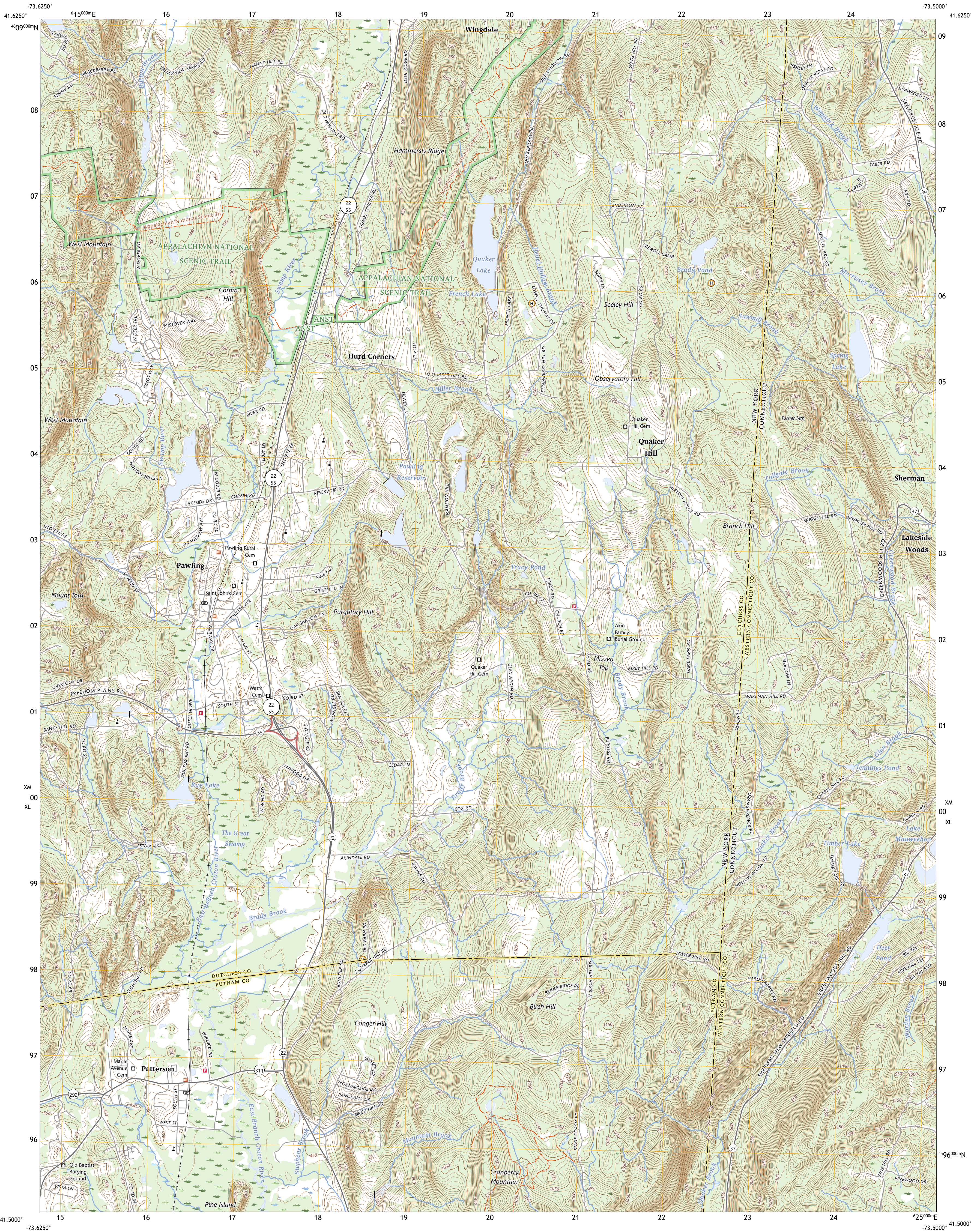




U.S. DEPARTMENT OF THE INTERIOR  
U.S. GEOLOGICAL SURVEY



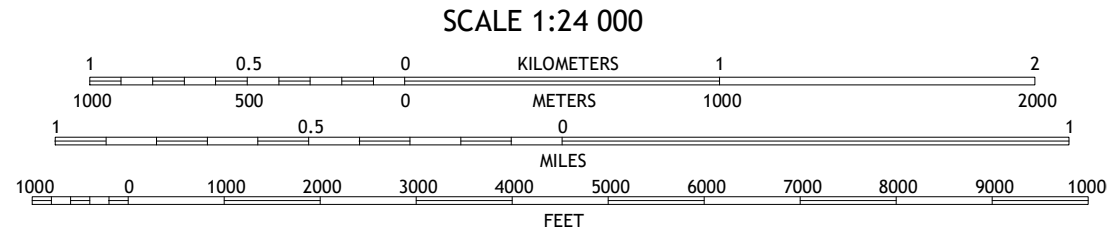
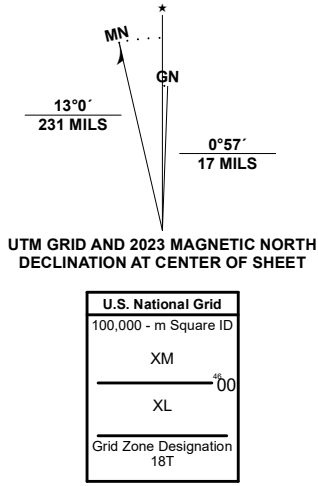
PAWLING QUADRANGLE  
NEW YORK - CONNECTICUT  
7.5-MINUTE SERIES



Produced by the United States Geological Survey

North American Datum of 1983 (NAD83)  
World Geodetic System of 1984 (WGS84). Projection and  
1 000-meter grid/Universal Transverse Mercator, Zone 18T  
This map is not a legal document. Boundaries may be  
generalized for this map scale. Private lands within government  
reservations may not be shown. Obtain permission before  
entering private lands.

Imagery.....NAIP, August 2017 - August 2018  
Roads.....U.S. Census Bureau, 2016 - 2018  
Names.....GNIS, 1979 - 2023  
Hydrography.....National Hydrography Dataset, 2002 - 2022  
Contours.....National Elevation Dataset, 2021  
Boundaries.....Multiple sources; see metadata file 2020 - 2022  
Wetlands.....FWS National Wetlands Inventory 1990 - 2010



1	2	3
4	5	6
7	8	9

- 1 Verbank
- 2 Dover Plains
- 3 Kent
- 4 Poughquag
- 5 New Milford
- 6 Lake Carmel
- 7 Brewster
- 8 Danbury

ROAD CLASSIFICATION	
Expressway	Local Connector
Secondary Hwy	Local Road
Ramp	4WD
Interstate Route	US Route
	State Route

PAWLING, NY, CT  
2023

