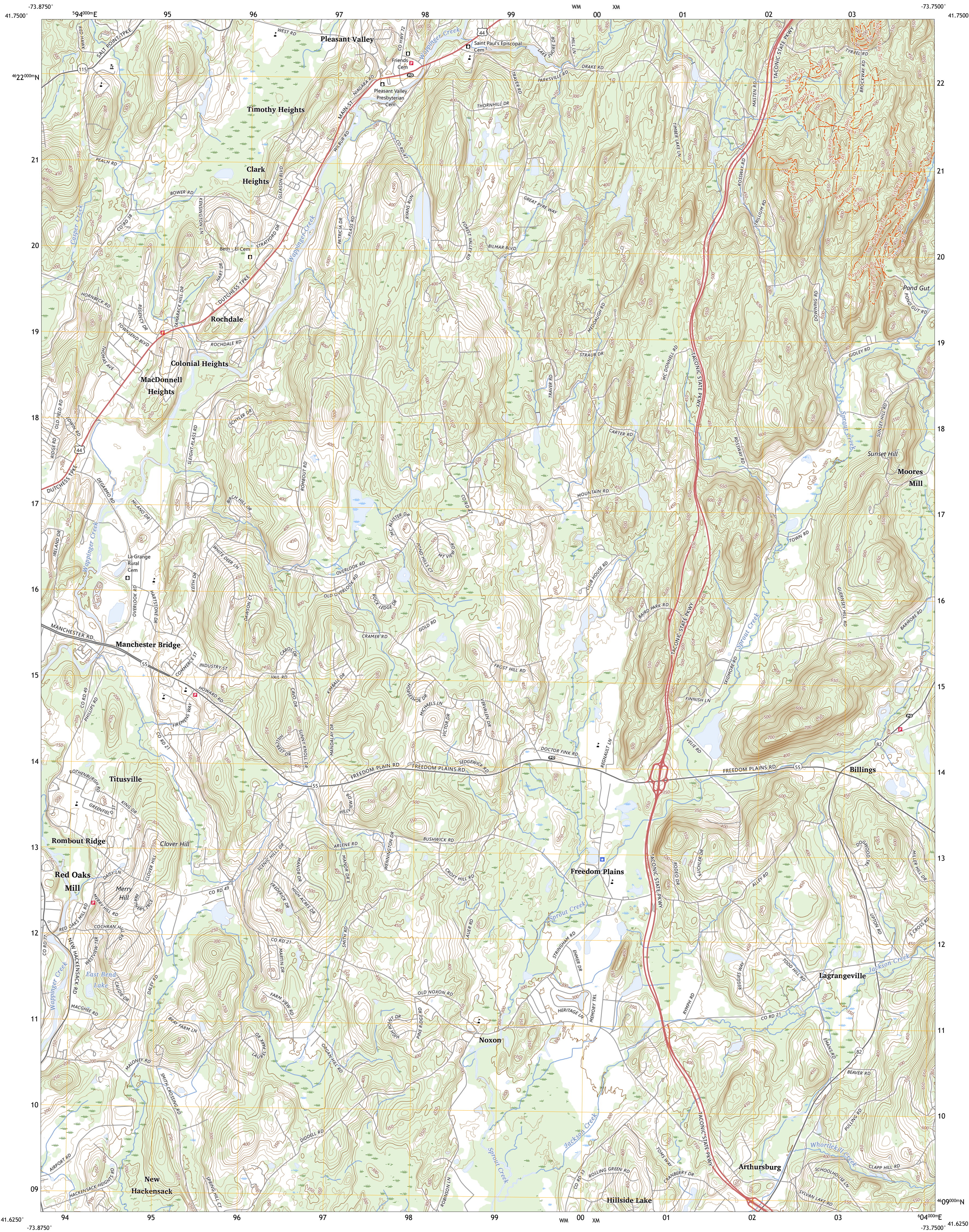




U.S. DEPARTMENT OF THE INTERIOR
U.S. GEOLOGICAL SURVEY



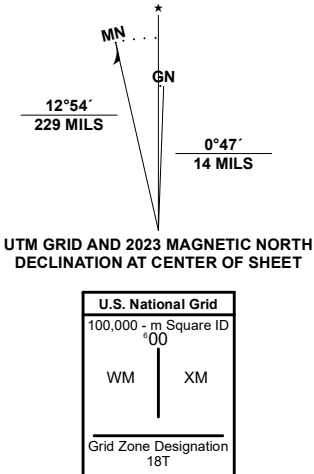
PLEASANT VALLEY QUADRANGLE
NEW YORK - DUTCHESS COUNTY
7.5-MINUTE SERIES



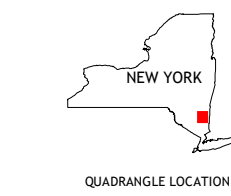
Produced by the United States Geological Survey

North American Datum of 1983 (NAD83)
World Geodetic System of 1984 (WGS84). Projection and
1 000-meter grid/Universal Transverse Mercator, Zone 18T
This map is not a legal document. Boundaries may be
generalized for this map scale. Private lands within government
reservations may not be shown. Obtain permission before
entering private lands.

Imagery.....NAIP, August 2017 - December 2017
Roads.....U.S. Census Bureau, 2016
Names.....GNIS, 1980 - 2023
Hydrography.....National Hydrography Dataset, 2002 - 2020
Contours.....National Elevation Dataset, 2016
Boundaries.....Multiple sources; see metadata file 2021 - 2022
Wetlands.....FWS National Wetlands Inventory 1990 - 2004



CONTOUR INTERVAL 10 FEET
NORTH AMERICAN VERTICAL DATUM OF 1988
This map was produced to conform with the
National Geospatial Program US Topo Product Standard.



1	2	3
4	5	6
7	8	9

ADJOINING QUADRANGLES

1 Hyde Park
2 Salt Point
3 Millbrook
4 Poughkeepsie
5 Verbank
6 Wappingers Falls
7 Hopewell Junction
8 Poughquag

ROAD CLASSIFICATION		
Expressway	Local Connector	
Secondary Hwy	Local Road	
Ramp	4WD	
Interstate Route	US Route	State Route

PLEASANT VALLEY, NY
2023

