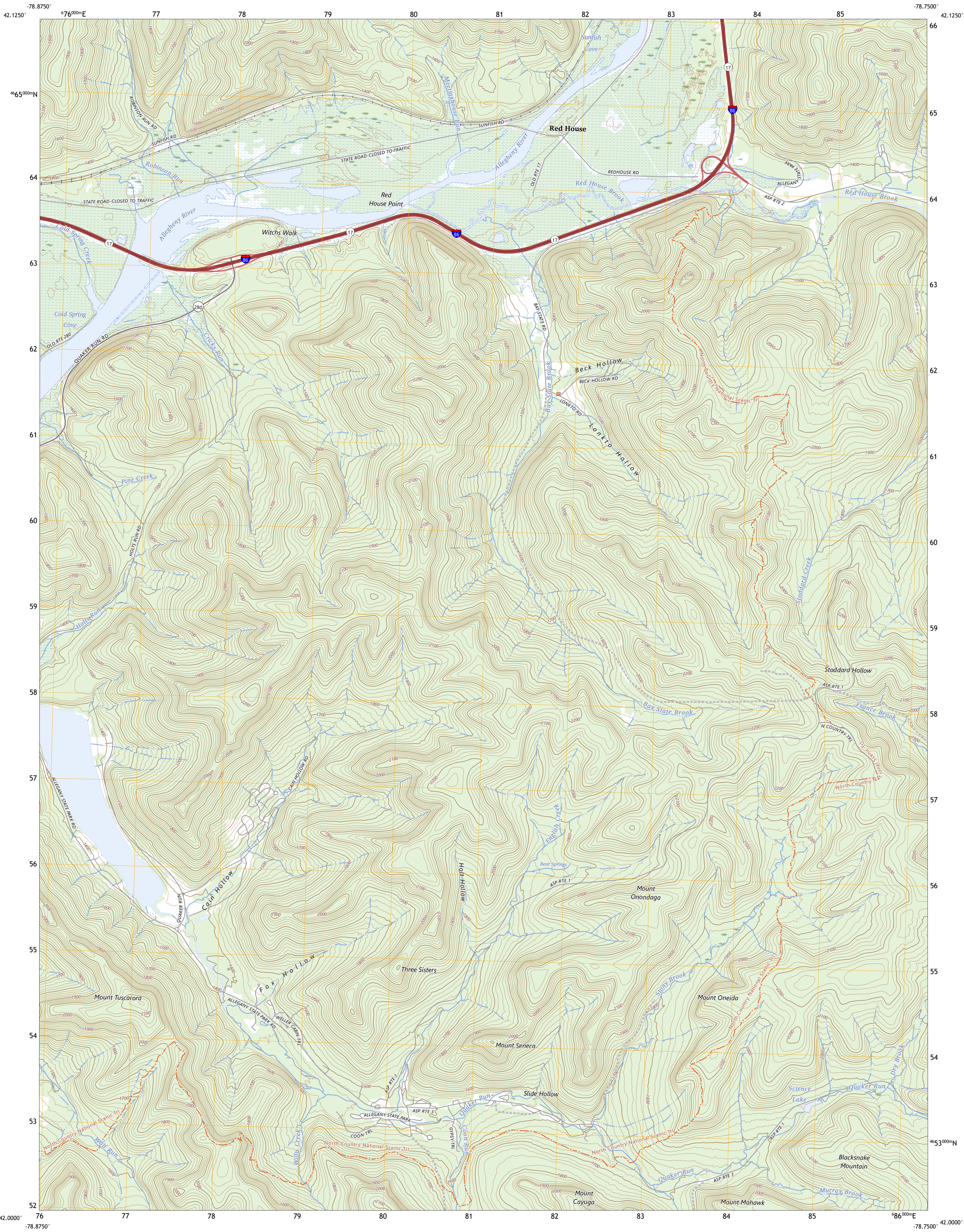




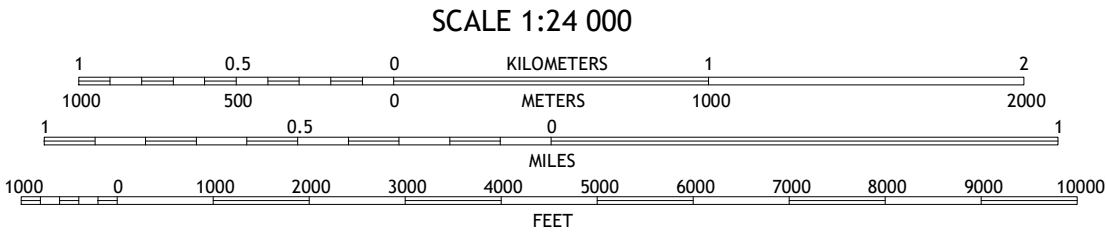
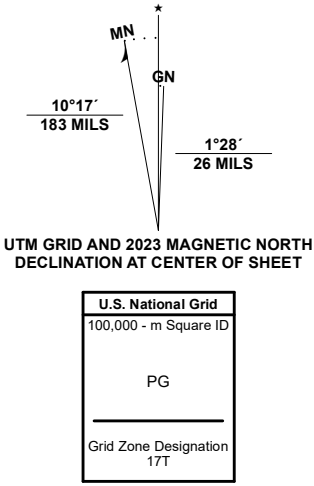
U.S. DEPARTMENT OF THE INTERIOR
U.S. GEOLOGICAL SURVEY



RED HOUSE QUADRANGLE
NEW YORK - CATTARAUGUS COUNTY
7.5-MINUTE SERIES



Produced by the United States Geological Survey
North American Datum of 1983 (NAD83)
World Geodetic System of 1984 (WGS84). Projection and
1 000-meter grid/Universal Transverse Mercator, Zone 17T
This map is not a legal document. Boundaries may be
generalized for this map scale. Private lands within government
reservations may not be shown. Obtain permission before
entering private lands.
Imagery.....NAIP, October 2017 - December 2017
Roads.....U.S. Census Bureau, 2016
Names.....GNIS, 1980 - 2019
Hydrography.....National Hydrography Dataset, 2002 - 2022
Contours.....National Elevation Dataset, 2022
Boundaries.....Multiple sources; see metadata file 2021 - 2022
Wetlands.....FWS National Wetlands Inventory 1977 - 1985



CONTOUR INTERVAL 20 FEET
NORTH AMERICAN VERTICAL DATUM OF 1988
This map was produced to conform with the
National Geospatial Program US Topo Product Standard.



1	2	3
4	5	6
7	8	9

ADJOINING QUADRANGLES

1 Randolph
2 Little Valley
3 Salamanca
4 Stearnburg
5 Limestone
6 Complanter Run
7 Stickney
8 Bradford

ROAD CLASSIFICATION	
Expressway	Local Connector
Secondary Hwy	Local Road
Ramp	4WD
Interstate Route	US Route
	State Route

RED HOUSE, NY
2023

