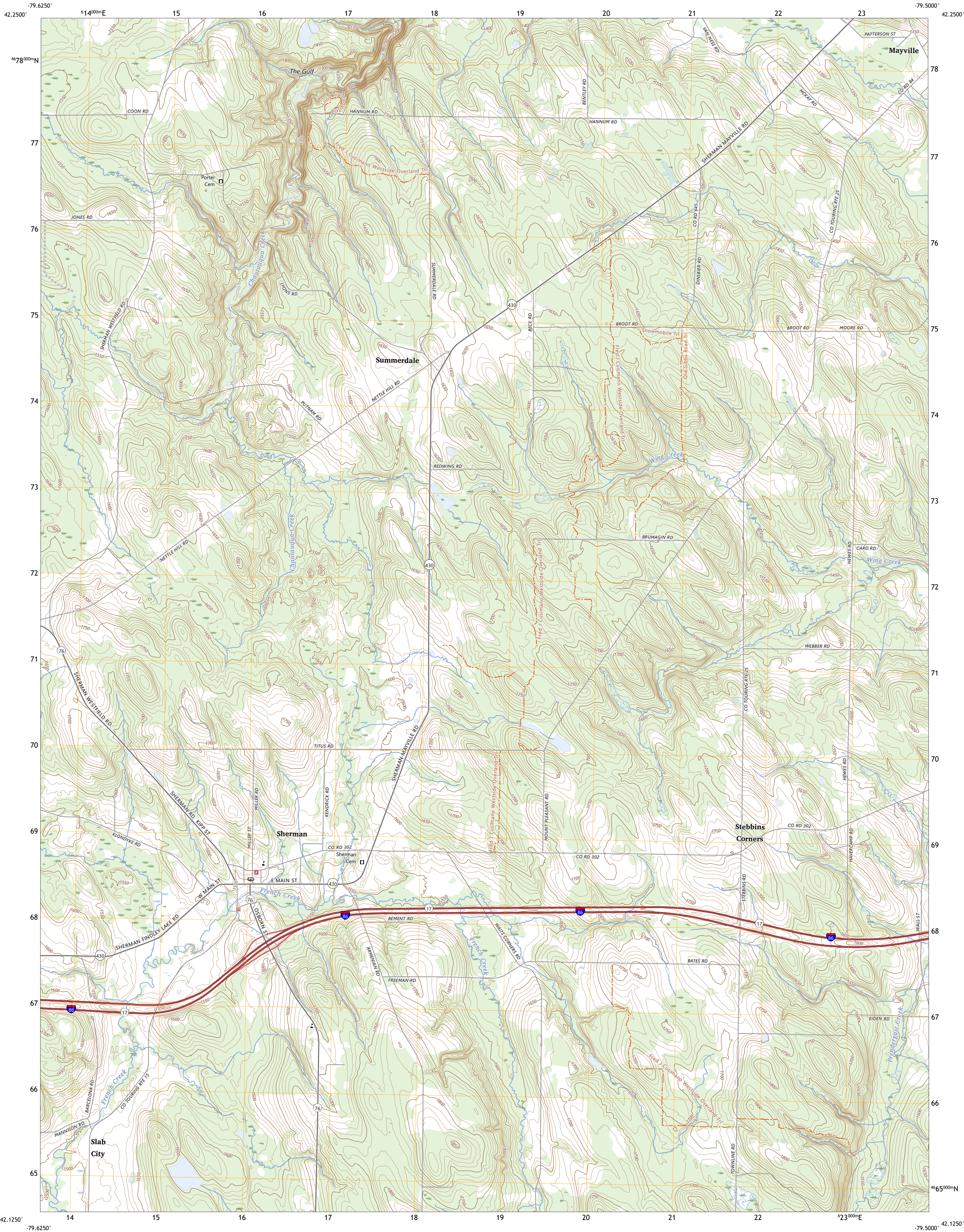




U.S. DEPARTMENT OF THE INTERIOR  
U.S. GEOLOGICAL SURVEY



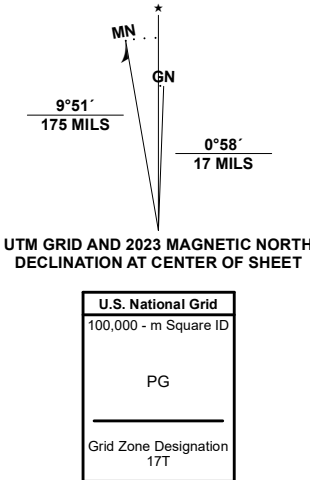
SHERMAN QUADRANGLE  
NEW YORK - CHAUTAUQUA COUNTY  
7.5-MINUTE SERIES



Produced by the United States Geological Survey

North American Datum of 1983 (NAD83)  
World Geodetic System of 1984 (WGS84). Projection and  
1 000-meter grid/Universal Transverse Mercator, Zone 17T  
This map is not a legal document. Boundaries may be  
generalized for this map scale. Private lands within government  
reservations may not be shown. Obtain permission before  
entering private lands.

Imagery.....	NAIP, September 2017 - December 2017
Roads.....	U.S. Census Bureau, 2016
Names.....	GNS, 1980 - 2023
Hydrography.....	National Hydrography Dataset, 2002 - 2022
Contours.....	National Elevation Dataset, 2018
Boundaries.....	Multiple sources; see metadata file 2021 - 2022
Wetlands.....	FWS National Wetlands Inventory 1981



CONTOUR INTERVAL 10 FEET  
NORTH AMERICAN VERTICAL DATUM OF 1988  
This map was produced to conform with the  
National Geospatial Program US Topo Product Standard.



1	2	3
4	5	6
7	8	9

1 Ripley  
2 Westfield  
3 Hartfield  
4 South Ripley  
5 Chautauqua  
6 Clymer  
7 North Clymer  
8 Panama

ROAD CLASSIFICATION		
Expressway	Local Connector	
Secondary Hwy	Local Road	
Ramp	4WD	
Interstate Route	US Route	State Route

SHERMAN, NY  
2023

