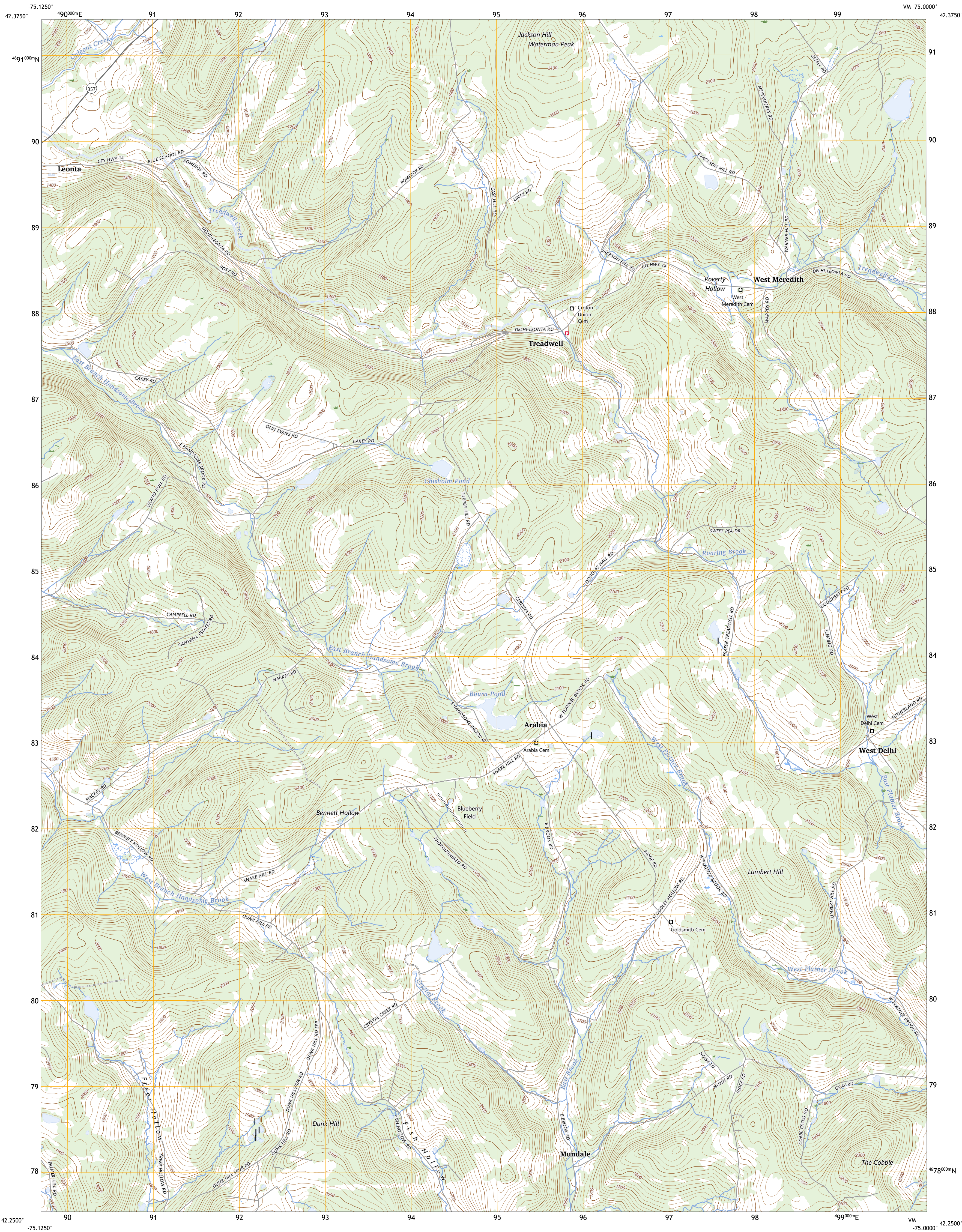




U.S. DEPARTMENT OF THE INTERIOR  
U.S. GEOLOGICAL SURVEY

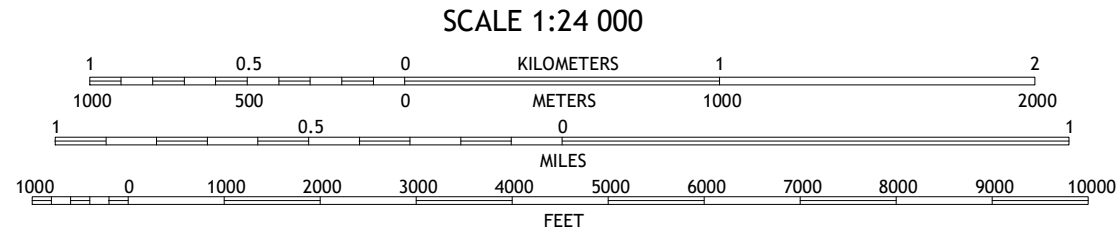
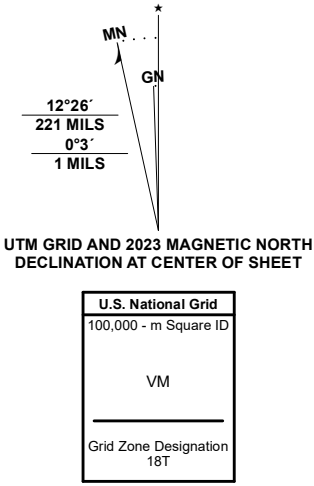


TREADWELL QUADRANGLE  
NEW YORK - DELAWARE COUNTY  
7.5-MINUTE SERIES



Produced by the United States Geological Survey

North American Datum of 1983 (NAD83)  
World Geodetic System of 1984 (WGS84). Projection and  
1 000-meter grid/Universal Transverse Mercator, Zone 18T  
This map is not a legal document. Boundaries may be  
generalized for this map scale. Private lands within government  
reservations may not be shown. Obtain permission before  
entering private lands.  
Imagery.....NAIP, September 2017 - December 2017  
Roads.....U.S. Census Bureau, 2016  
Names.....GNS, 1980 - 2020  
Hydrography.....National Hydrography Dataset, 2001 - 2020  
Contours.....National Elevation Dataset, 1999  
Boundaries.....Multiple sources; see metadata file 2021 - 2022  
Wetlands.....FWS National Wetlands Inventory 1982 - 2003



CONTOUR INTERVAL 20 FEET  
NORTH AMERICAN VERTICAL DATUM OF 1988  
This map was produced to conform with the  
National Geospatial Program US Topo Product Standard.



1	2	3
4	5	6
7	8	9

1 Otego  
2 Oneonta  
3 West Davenport  
4 Franklin  
5 Delhi  
6 Walton West  
7 Walton East  
8 Hamden

ROAD CLASSIFICATION		
Expressway	Local Connector	State Route
Secondary Hwy	Local Road	
Ramp	4WD	
Interstate Route	US Route	

TREADWELL, NY  
2023

