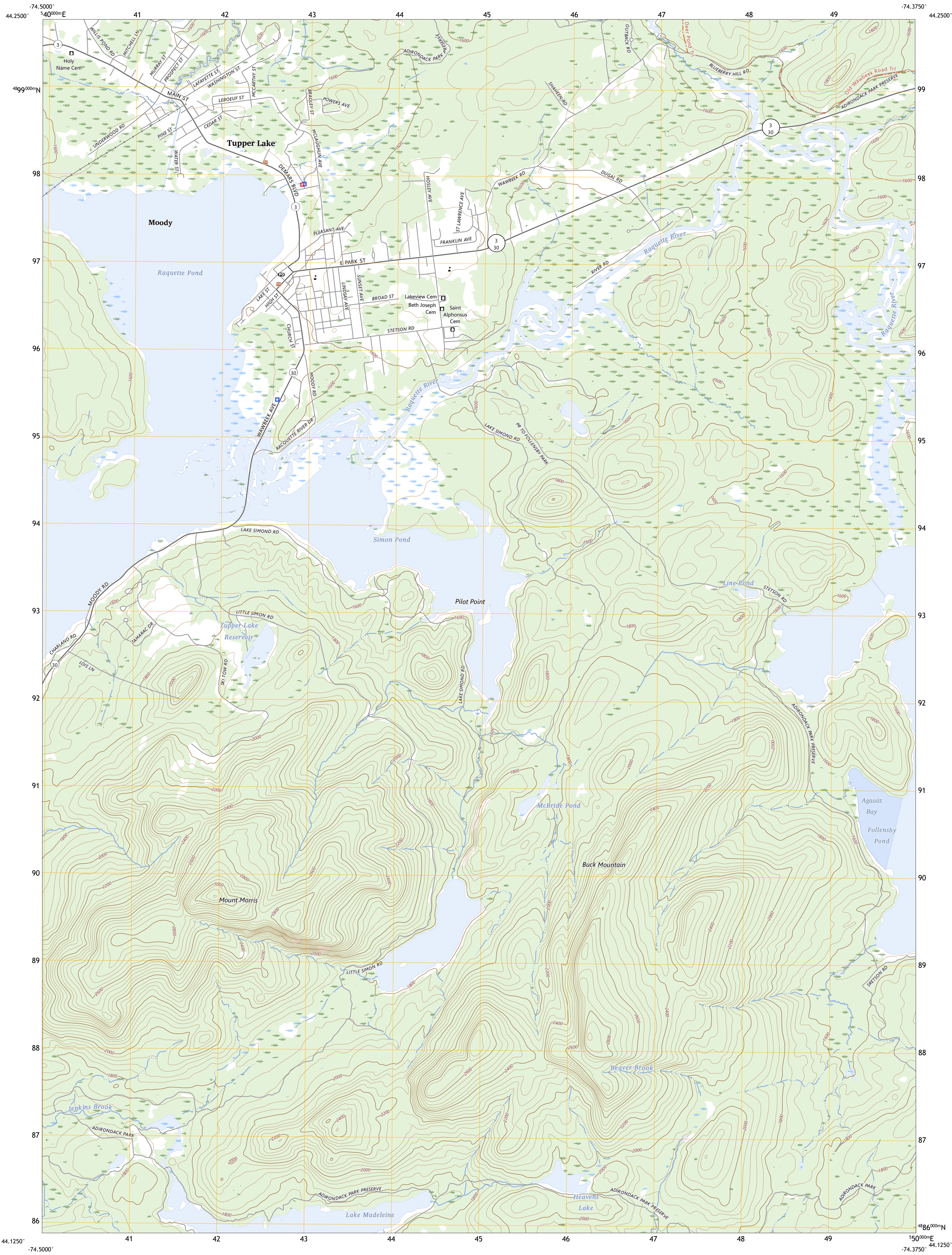




U.S. DEPARTMENT OF THE INTERIOR
U.S. GEOLOGICAL SURVEY



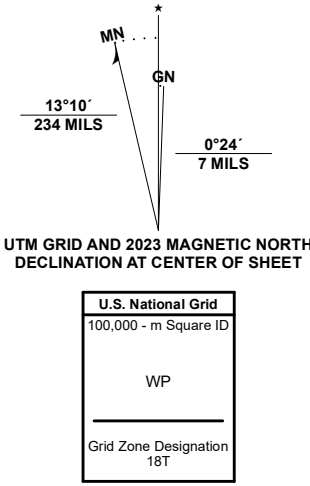
TUPPER LAKE QUADRANGLE
NEW YORK - FRANKLIN COUNTY
7.5-MINUTE SERIES



Produced by the United States Geological Survey

North American Datum of 1983 (NAD83)
World Geodetic System of 1984 (WGS84). Projection and
1 000-meter grid/Universal Transverse Mercator, Zone 18T
This map is not a legal document. Boundaries may be
generalized for this map scale. Private lands within government
reservations may not be shown. Obtain permission before
entering private lands.

Imagery.....NAIP, September 2017 - December 2017
Roads.....U.S. Census Bureau, 2016
Names.....GNS, 1980 - 2023
Hydrography.....National Hydrography Dataset, 2004 - 2019
Contours.....National Elevation Dataset, 1999
Boundaries.....Multiple sources; see metadata file 2021 - 2022
Wetlands.....FWS National Wetlands Inventory 2009 - 2010



CONTOUR INTERVAL 40 FEET
NORTH AMERICAN VERTICAL DATUM OF 1988
This map was produced to conform with the
National Geospatial Program US Topo Product Standard.



1	2	3
4	5	6
7	8	9

1 Mount Matumbula
2 Derrick
3 Upper Saranac Lake
4 Pierceland
5 Stony Creek Mountain
6 Little Tupper Lake
7 Grampus Lake
8 Kempshall Mountain

ROAD CLASSIFICATION
Expressway
Secondary Hwy
Ramp
Interstate Route
Local Connector
Local Road
4WD
US Route
State Route

TUPPER LAKE, NY
2023

