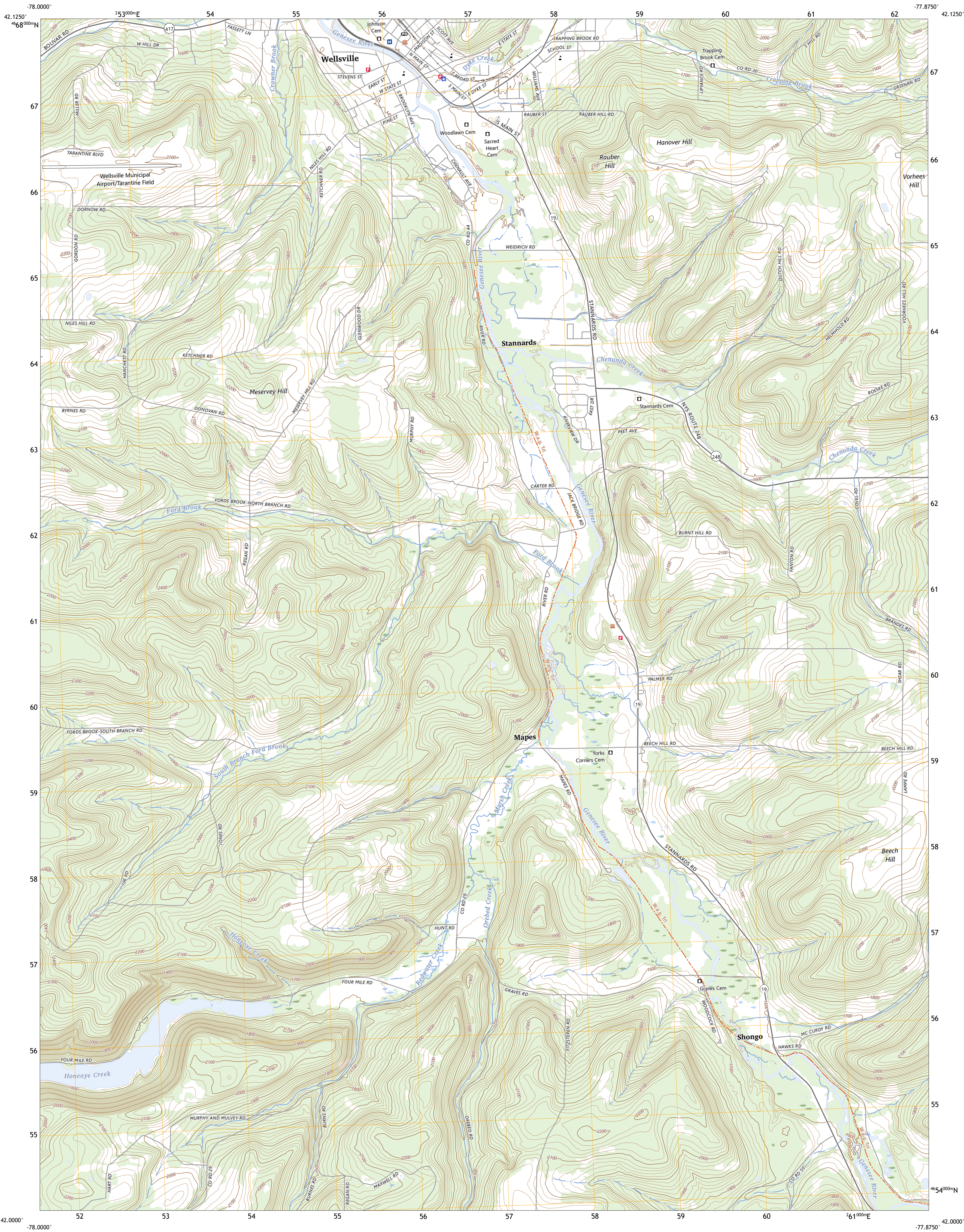




U.S. DEPARTMENT OF THE INTERIOR  
U.S. GEOLOGICAL SURVEY



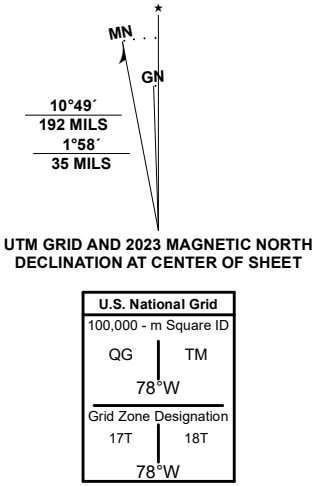
WELLSVILLE SOUTH QUADRANGLE  
NEW YORK - ALLEGANY COUNTY  
7.5-MINUTE SERIES



Produced by the United States Geological Survey

North American Datum of 1983 (NAD83)  
World Geodetic System of 1984 (WGS84). Projection and  
1 000-meter grid/Universal Transverse Mercator, Zone 17T18T  
This map is not a legal document. Boundaries may be  
generalized for this map scale. Private lands within government  
reservations may not be shown. Obtain permission before  
entering private lands.

Imagery.....NAIP, October 2017 - December 2017  
Roads.....U.S. Census Bureau, 2016  
Names.....GNIS, 1980 - 2023  
Hydrography.....National Hydrography Dataset, 2002 - 2022  
Contours.....National Elevation Dataset, 2022  
Boundaries.....Multiple sources; see metadata file 2021 - 2022  
Wetlands.....FWS National Wetlands Inventory 1983 - 1985



1	2	3
4	5	6
7	8	9

- 1 Belmont
- 2 Wellsville North
- 3 Andover
- 4 Allentown
- 5 Whitesville
- 6 Owayo
- 7 Ellsburg
- 8 Ullyses

ROAD CLASSIFICATION	
Expressway	Local Connector
Secondary Hwy	Local Road
Ramp	4WD
Interstate Route	US Route
	State Route

WELLSVILLE SOUTH, NY  
2023

