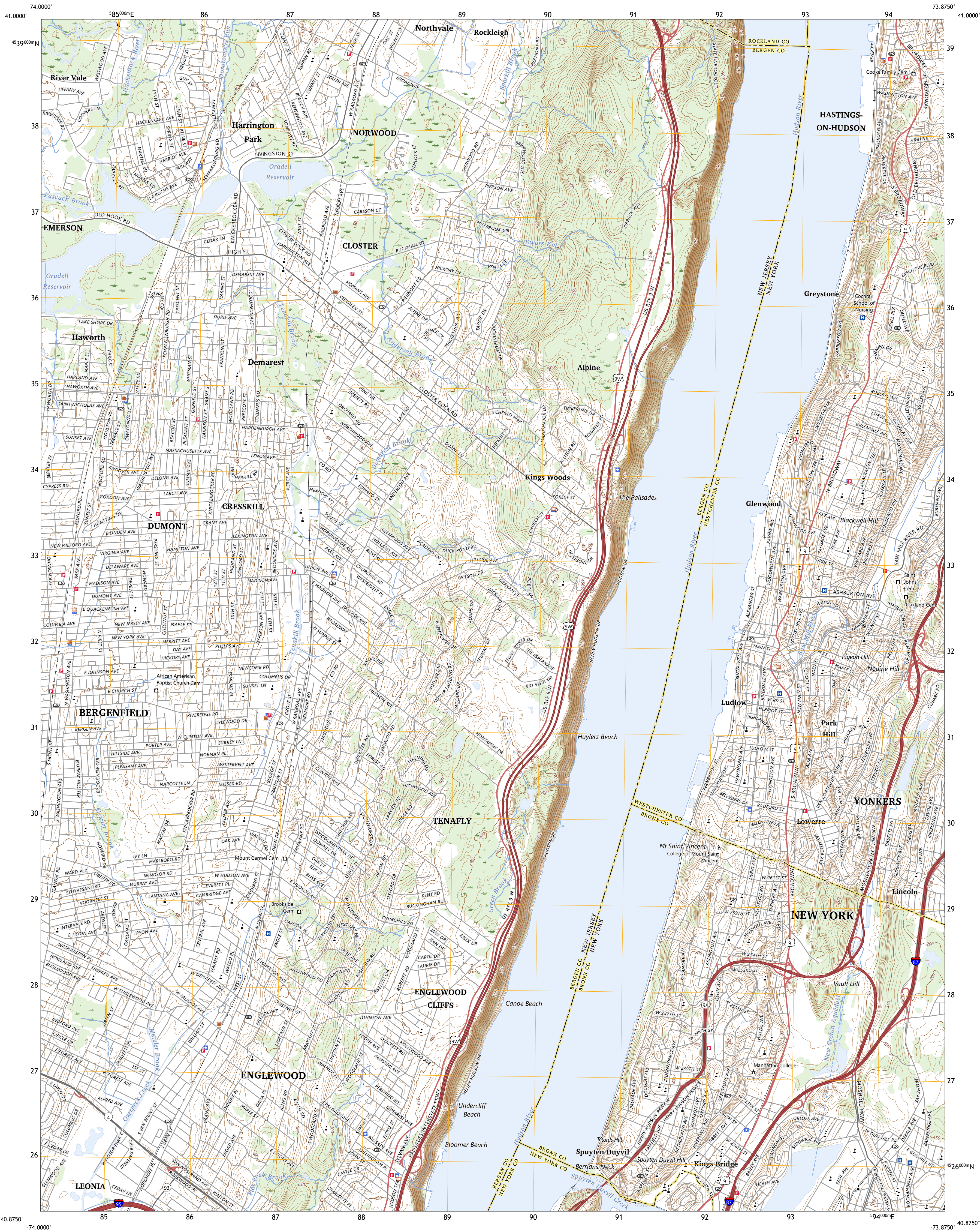




U.S. DEPARTMENT OF THE INTERIOR
U.S. GEOLOGICAL SURVEY



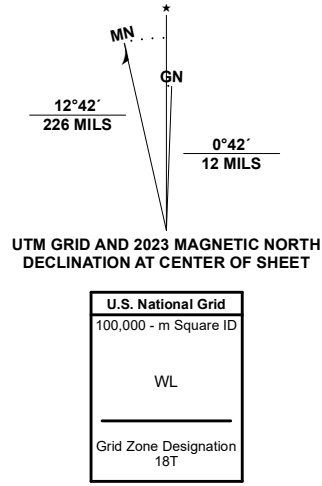
YONKERS QUADRANGLE
NEW YORK - NEW JERSEY
7.5-MINUTE SERIES



Produced by the United States Geological Survey

North American Datum of 1983 (NAD83)
World Geodetic System of 1984 (WGS84). Projection and
1 000-meter grid/Universal Transverse Mercator, Zone 18T
This map is not a legal document. Boundaries may be
generalized for this map scale. Private lands within government
reservations may not be shown. Obtain permission before
entering private lands.

Imagery.....NAIP, July 2017 - December 2017
Roads.....U.S. Census Bureau, 2016
Names.....GNV, 1979 - 2023
Hydrography.....National Hydrography Dataset, 2002 - 2022
Contours.....National Elevation Dataset, 2015
Boundaries.....Multiple sources; see metadata file 2021 - 2022
Wetlands.....FWS National Wetlands Inventory 2007 - 2011

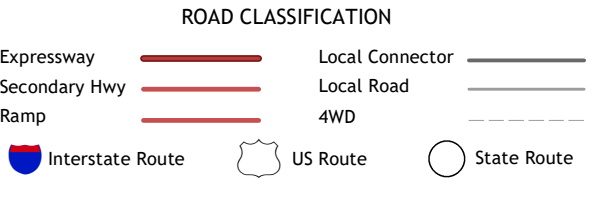


CONTOUR INTERVAL 10 FEET
NORTH AMERICAN VERTICAL DATUM OF 1988
This map was produced to conform with the
National Geospatial Program US Topo Product Standard.



| | | |
|---|---|---|
| 1 | 2 | 3 |
| 4 | 5 | 6 |
| 7 | 8 | 9 |

- 1 Park Ridge
- 2 Nyack
- 3 White Plains
- 4 Hackensack
- 5 Mount Vernon
- 6 Weehawken
- 7 Central Park
- 8 Flushing



YONKERS, NY, NJ
2023

