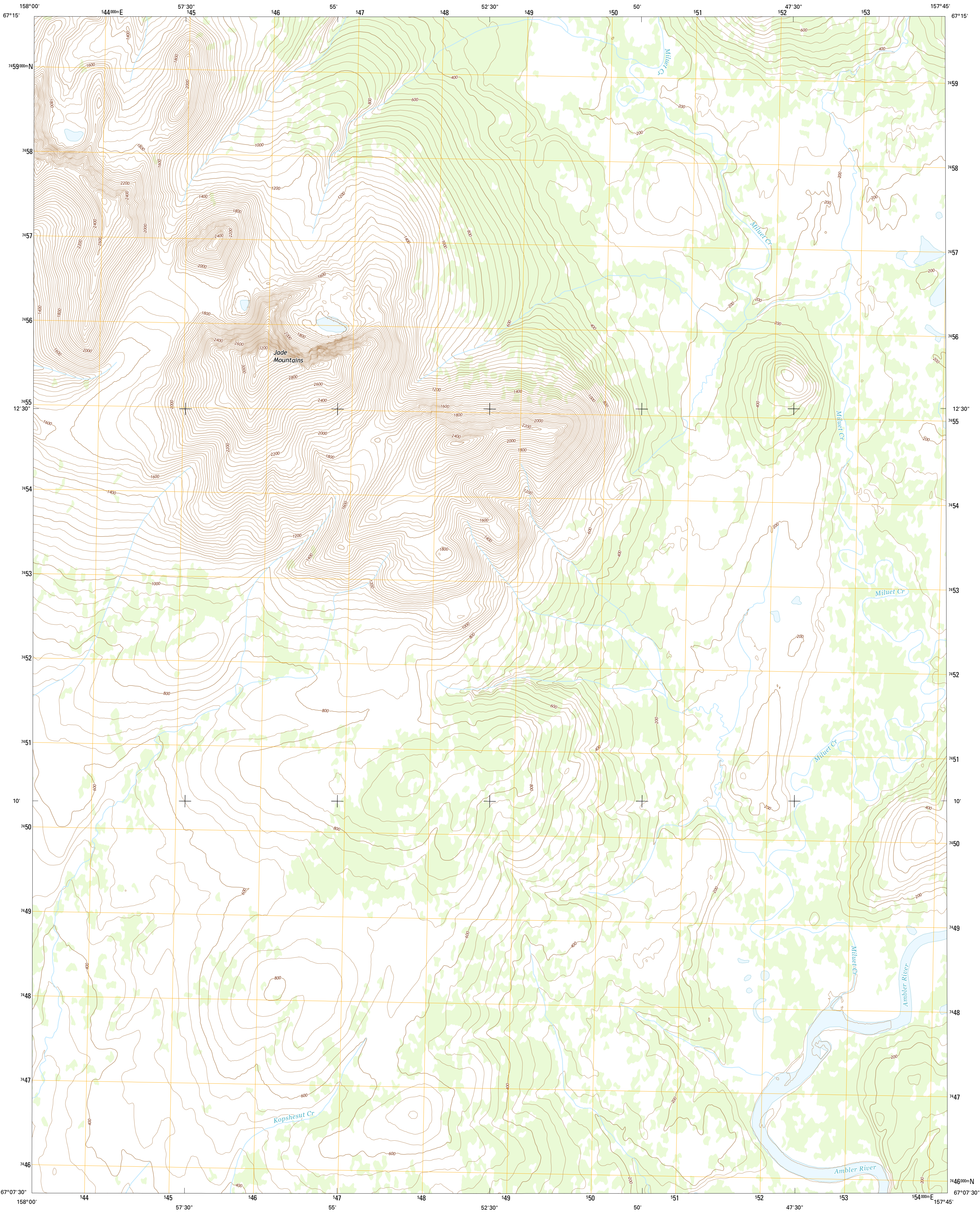




U.S. DEPARTMENT OF THE INTERIOR
U.S. GEOLOGICAL SURVEY



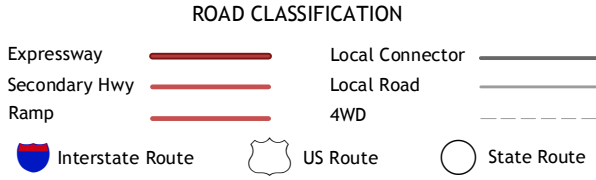
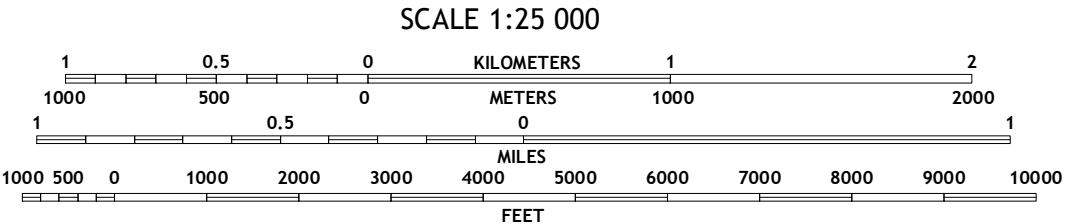
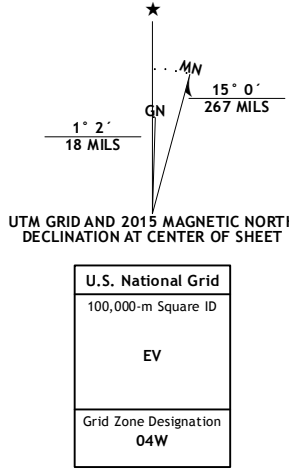
AMBLER RIVER A-4 NW QUADRANGLE
ALASKA-NORTHWEST ARCTIC BOROUGH
7.5-MINUTE SERIES



Produced by the United States Geological Survey
North American Datum of 1983 (NAD83)
World Geodetic System of 1984 (WGS84). Projection and
1 000-meter grid: Universal Transverse Mercator, Zone 04W

This map is not a legal document. Boundaries may be generalized for
this map scale. Private lands within government reservations
may not be shown. Obtain permission before entering private lands

Imagery.....SPOT, ©2012
Roads.....Alaska Dept. of Transportation, 2013
Names.....GNIS, 2015
Hydrography.....National Hydrography Dataset, 2012
Contours.....National Elevation Dataset, 2013
Boundaries.....Multiple sources; see metadata file, 1950 - 2015
Public Land Survey System.....BLM, 2006 - 2008



1	2	3
4	5	6
7	8	9

1 Ambler River (B-5) SE
2 Ambler River (B-4) SW
3 Ambler River (B-4) SE
4 Ambler River (A-5) NE
5 Ambler River (A-4) NE
6 Ambler River (A-5) SE
7 Ambler River (A-4) SW
8 Ambler River (A-4) SE

AMBLER RIVER A-4 NW, AK
2015

