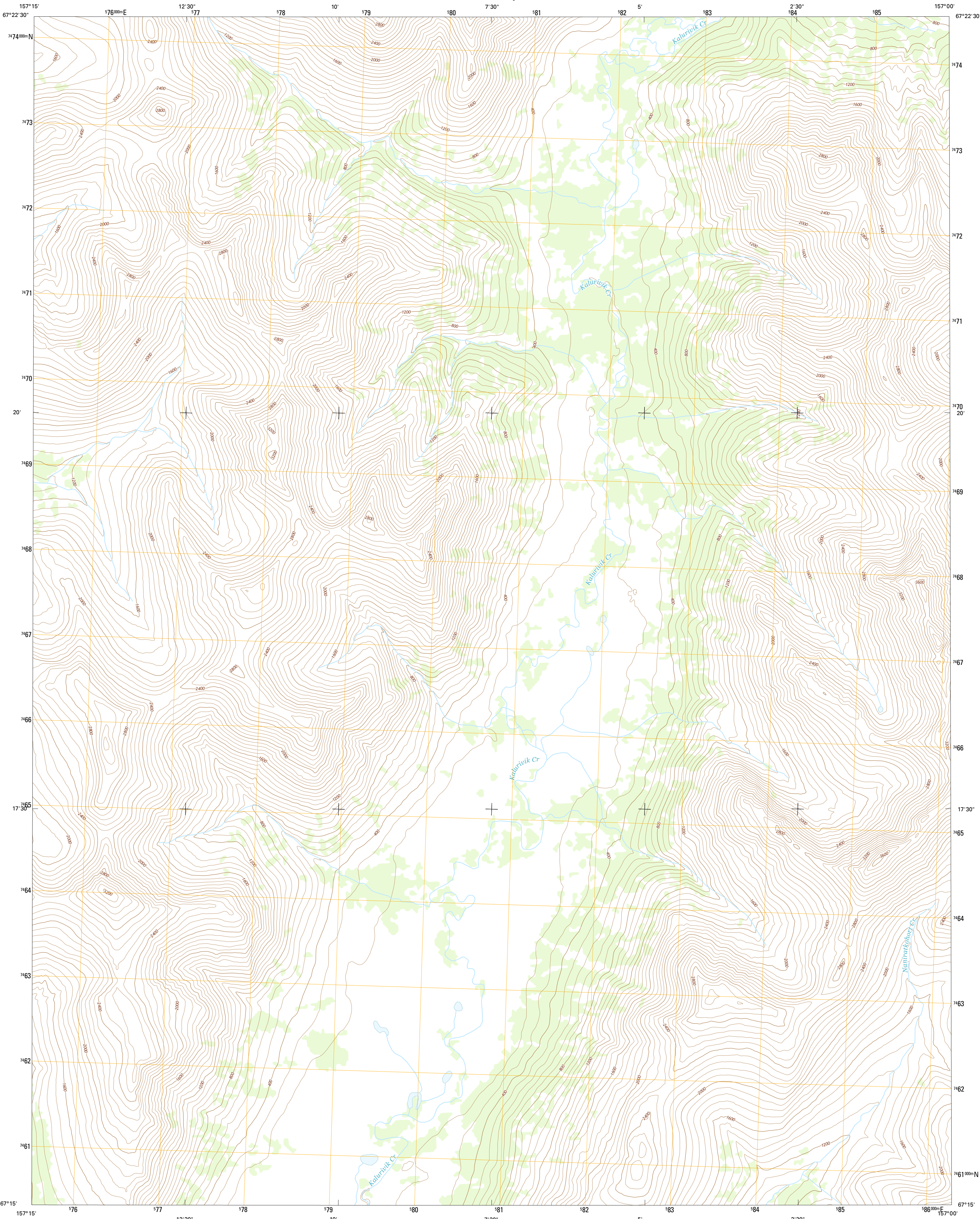




U.S. DEPARTMENT OF THE INTERIOR  
U.S. GEOLOGICAL SURVEY



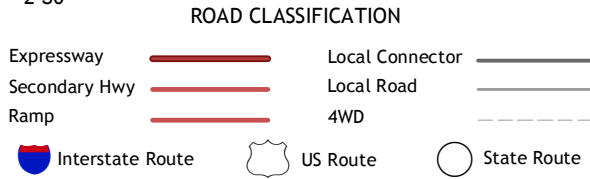
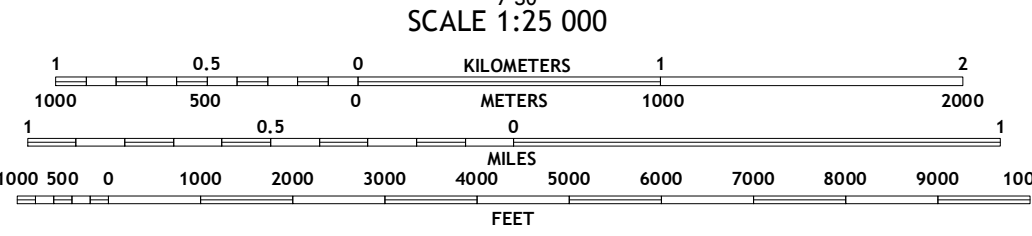
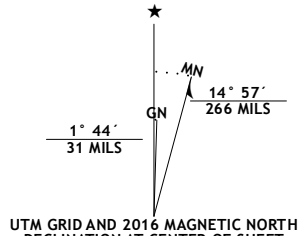
AMBLER RIVER B-3 SE QUADRANGLE  
ALASKA-NORTHWEST ARCTIC BOROUGH  
7.5-MINUTE SERIES



Produced by the United States Geological Survey  
North American Datum of 1983 (NAD83)  
World Geodetic System of 1984 (WGS84). Projection and  
1 000-meter grid: Universal Transverse Mercator, Zone 49W  
10 000-foot ticks: Alaska Coordinate System of 1983 (zone 6)

This map is not a legal document. Boundaries may be  
generalized for this map scale. Private lands within government  
reservations may not be shown. Obtain permission before  
entering private lands.

Imagery.....SPOT6, 2009 - 2015  
Roads.....Alaska Dept. of Transportation, 2014  
Names.....GNIS, 2016  
Hydrography.....National Hydrography Dataset, 2010  
Contours.....National Elevation Dataset, 2013  
Boundaries.....Multiple sources; see metadata file, 1950 - 2016  
Public Land Survey System.....BLM, 2006 - 2008  
Wetlands.....FWS National Wetlands Inventory 1977 - 2014



1	2	3
4	5	6
7	8	9

1 Ambler River (B-3) NW  
2 Ambler River (B-3) NE  
3 Ambler River (B-2) NW  
4 Ambler River (B-2) SW  
5 Ambler River (B-2) SW  
6 Ambler River (A-3) NW  
7 Ambler River (A-3) NE  
8 Ambler River (A-2) NW

AMBLER RIVER B-3 SE, AK  
2016

