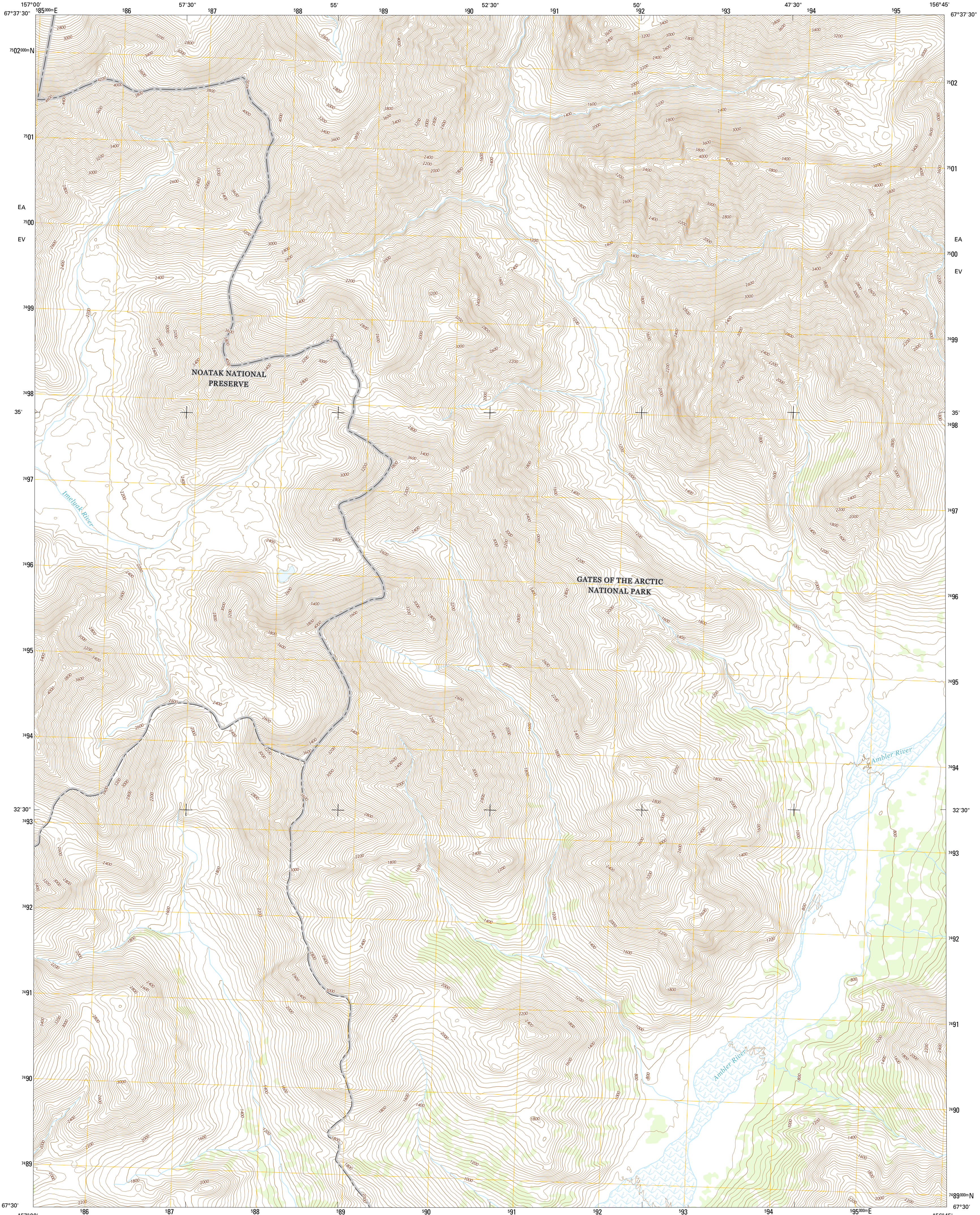




U.S. DEPARTMENT OF THE INTERIOR
U.S. GEOLOGICAL SURVEY



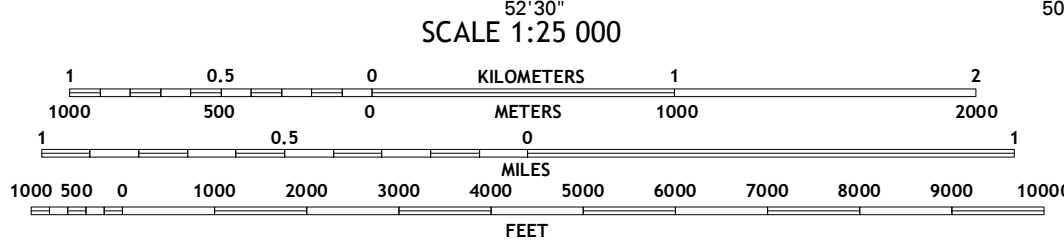
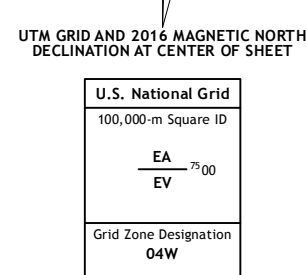
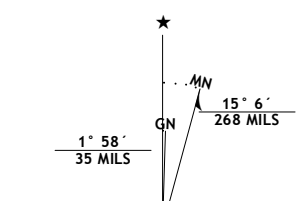
AMBLER RIVER C-2 SW QUADRANGLE
ALASKA-NORTHWEST ARCTIC BOROUGH
7.5-MINUTE SERIES



Produced by the United States Geological Survey
North American Datum of 1983 (NAD83)
World Geodetic System of 1984 (WGS84). Projection and
1 000-meter grid: Universal Transverse Mercator, Zone 64W
10 000-foot ticks: Alaska Coordinate System of 1983 (zone 6)

This map is not a legal document. Boundaries may be
generalized for this map scale. Private lands within government
reservations may not be shown. Obtain permission before
entering private lands.

Imagery.....SPOTC, 2009 - 2015
Roads.....Alaska Dept. of Transportation, 2014
Names.....GNIS, 2016
Hydrography.....National Hydrography Dataset, 2009
Contours.....National Elevation Dataset, 2016
Boundaries.....Multiple sources; see metadata file, 1950 - 2016
Public Land Survey System.....BLM, 2006 - 2008
Wetlands.....FWS National Wetlands Inventory 1977 - 2014



SCALE 1:25 000
CONTOUR INTERVAL 40 FEET
NORTH AMERICAN VERTICAL DATUM OF 1988

This map was produced to conform with the
National Geospatial Program US Topo Product Standard, 2011.
A metadata file associated with this product is draft version 0.6.18



QUADRANGLE LOCATION

ROAD CLASSIFICATION	
	Expressway
	Secondary Hwy
	Ramp
	Interstate Route
	US Route
	State Route
	Local Connector
	Local Road
	4WD

1	2	3	4	5	6	7	8
1 Ambler River (C-3) NE	2 Ambler River (C-2) NW	3 Ambler River (C-2) NE	4 Ambler River (C-3) SE	5 Ambler River (C-2) SE	6 Ambler River (B-3) NE	7 Ambler River (B-2) NW	8 Ambler River (B-2) NE

AMBLER RIVER C-2 SW, AK
2016

