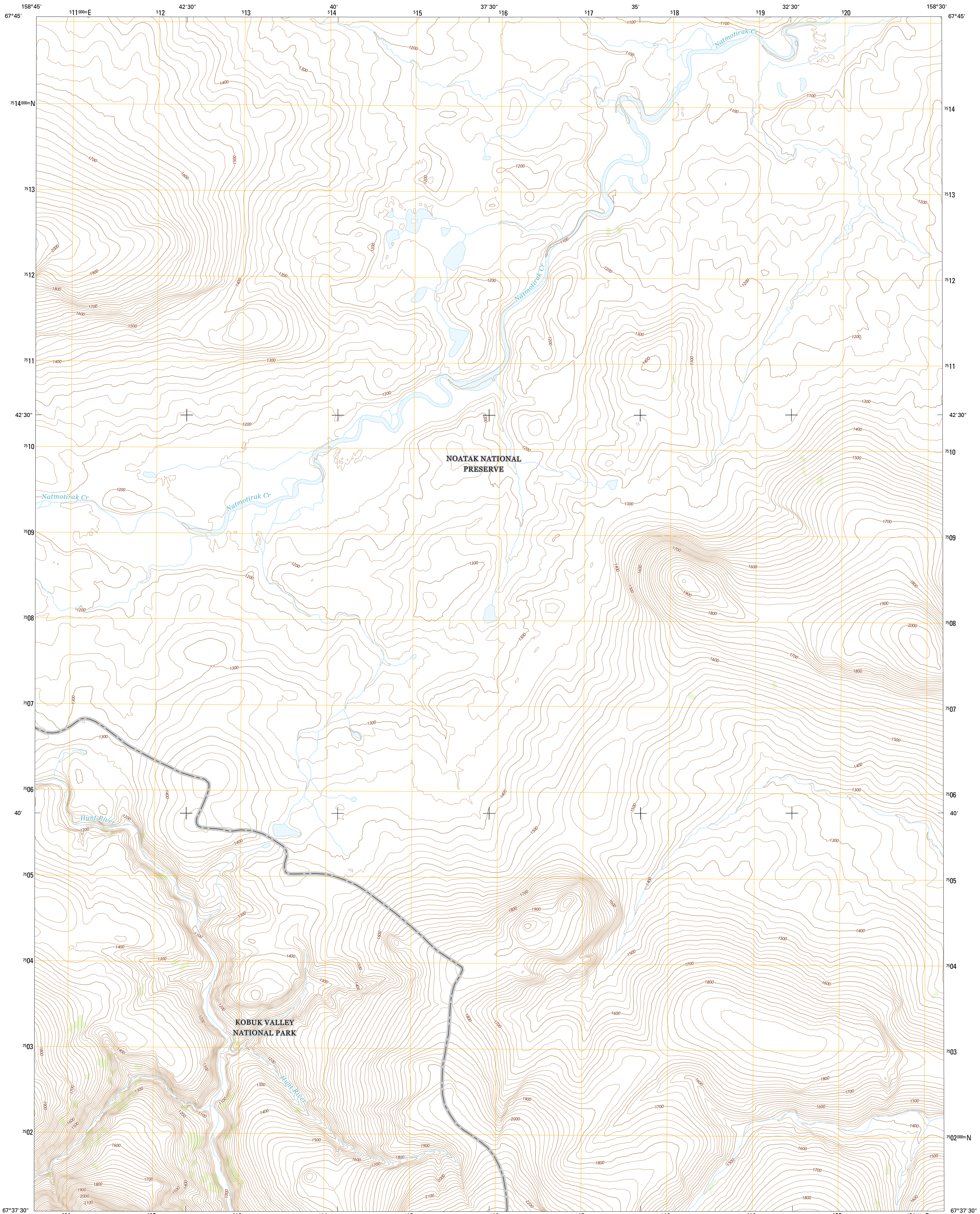




U.S. DEPARTMENT OF THE INTERIOR
U.S. GEOLOGICAL SURVEY



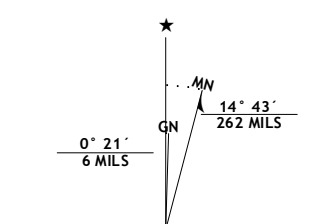
AMBLER RIVER C-6 NE QUADRANGLE
ALASKA-NORTHWEST ARCTIC BOROUGH
7.5-MINUTE SERIES



Produced by the United States Geological Survey
North American Datum of 1983 (NAD83)
World Geodetic System of 1984 (WGS84). Projection and
1 000-meter grid: Universal Transverse Mercator, Zone 04W

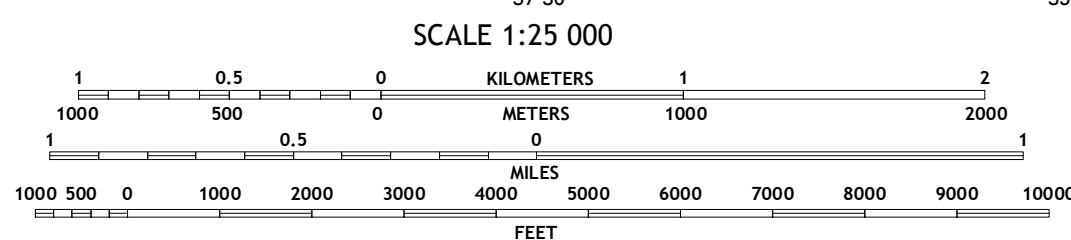
This map is not a legal document. Boundaries may be generalized
for this map scale. Private lands within government reservations
may not be shown. Obtain permission before entering private lands

Imagery.....SPOT, ©2009
Roads.....Alaska Dept. of Transportation, 2013
Names.....GNIS, 2015
Hydrography.....National Hydrography Dataset, 2009
Contours.....National Elevation Dataset, 2013
Boundaries.....Multiple sources; see metadata file, 1950 - 2015
Public Land Survey System.....BLM, 2006 - 2008



UTM GRID AND 2015 MAGNETIC NORTH
DECLINATION AT CENTER OF SHEET

U.S. National Grid
100,000-m Square ID
EA
Grid Zone Designation
04W

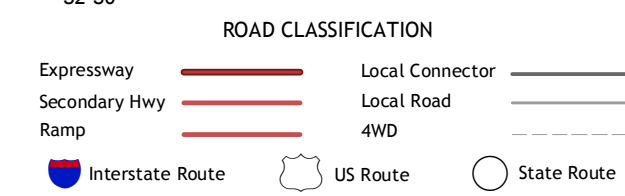


CONTOUR INTERVAL 20 FEET
NORTH AMERICAN VERTICAL DATUM OF 1988

This map was produced to conform with the
National Geospatial Program US Topo Product Standard, 2011.
A metadata file associated with this product is draft version 0.6.17



QUADRANGLE LOCATION



1	2	3
4	5	6
7	8	

ADJOINING QUADRANGLES

- 1 Ambler River (D-6) SW
- 2 Ambler River (D-6) SE
- 3 Ambler River (D-5) SW
- 4 Ambler River (C-6) NW
- 5 Ambler River (C-5) NW
- 6 Ambler River (C-6) SW
- 7 Ambler River (C-6) SE
- 8 Ambler River (C-5) SW

AMBLER RIVER C-6 NE, AK
2015

