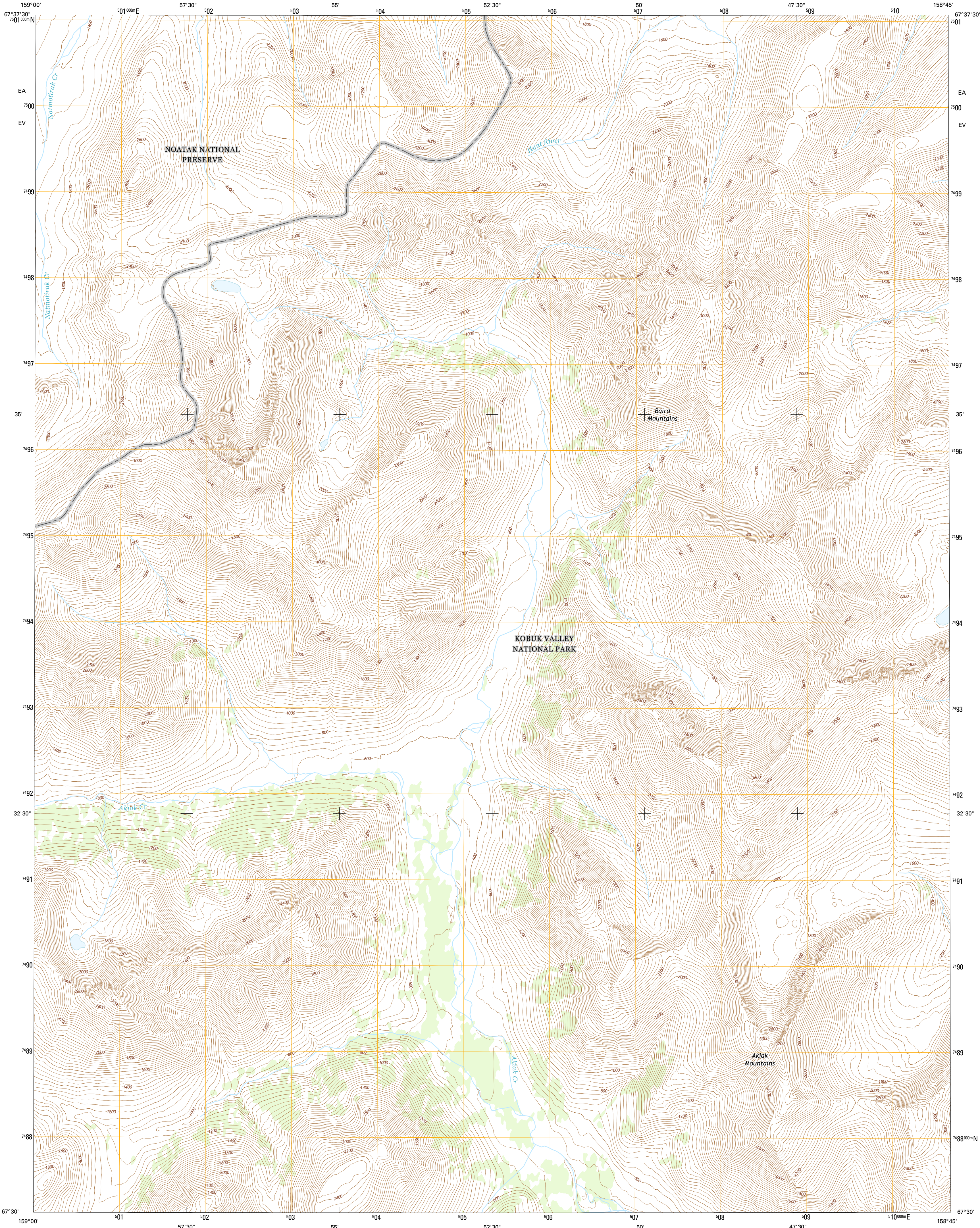




U.S. DEPARTMENT OF THE INTERIOR
U.S. GEOLOGICAL SURVEY



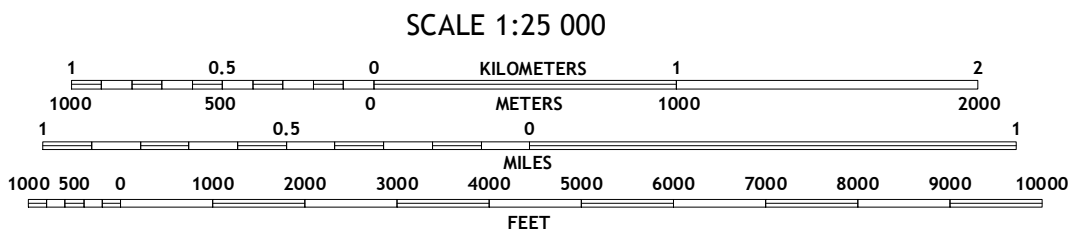
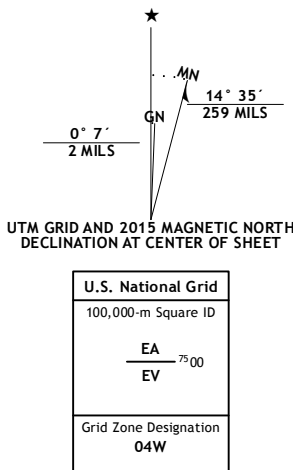
AMBLER RIVER C-6 SW QUADRANGLE
ALASKA-NORTHWEST ARCTIC BOROUGH
7.5-MINUTE SERIES



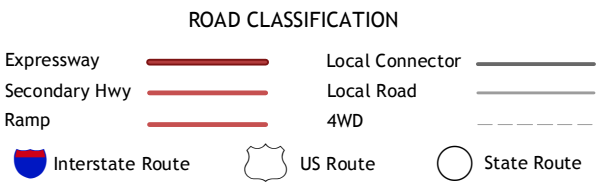
Produced by the United States Geological Survey
North American Datum of 1983 (NAD83)
World Geodetic System of 1984 (WGS84). Projection and
1 000-meter grid: Universal Transverse Mercator, Zone 04W

This map is not a legal document. Boundaries may be generalized for this map scale. Private lands within government reservations may not be shown. Obtain permission before entering private lands

Images.....SPOT, ©2009
Roads.....Alaska Dept. of Transportation, 2013
Names.....GNIS, 2015
Hydrography.....National Hydrography Dataset, 2009
Contours.....National Elevation Dataset, 2013
Boundaries.....Multiple sources; see metadata file, 1950 - 2015
Public Land Survey System.....BLM, 2006 - 2008



QUADRANGLE LOCATION



1	2	3
4		5
6	7	8

ADJOINING QUADRANGLES

AMBLER RIVER C-6 SW, AK
2015

