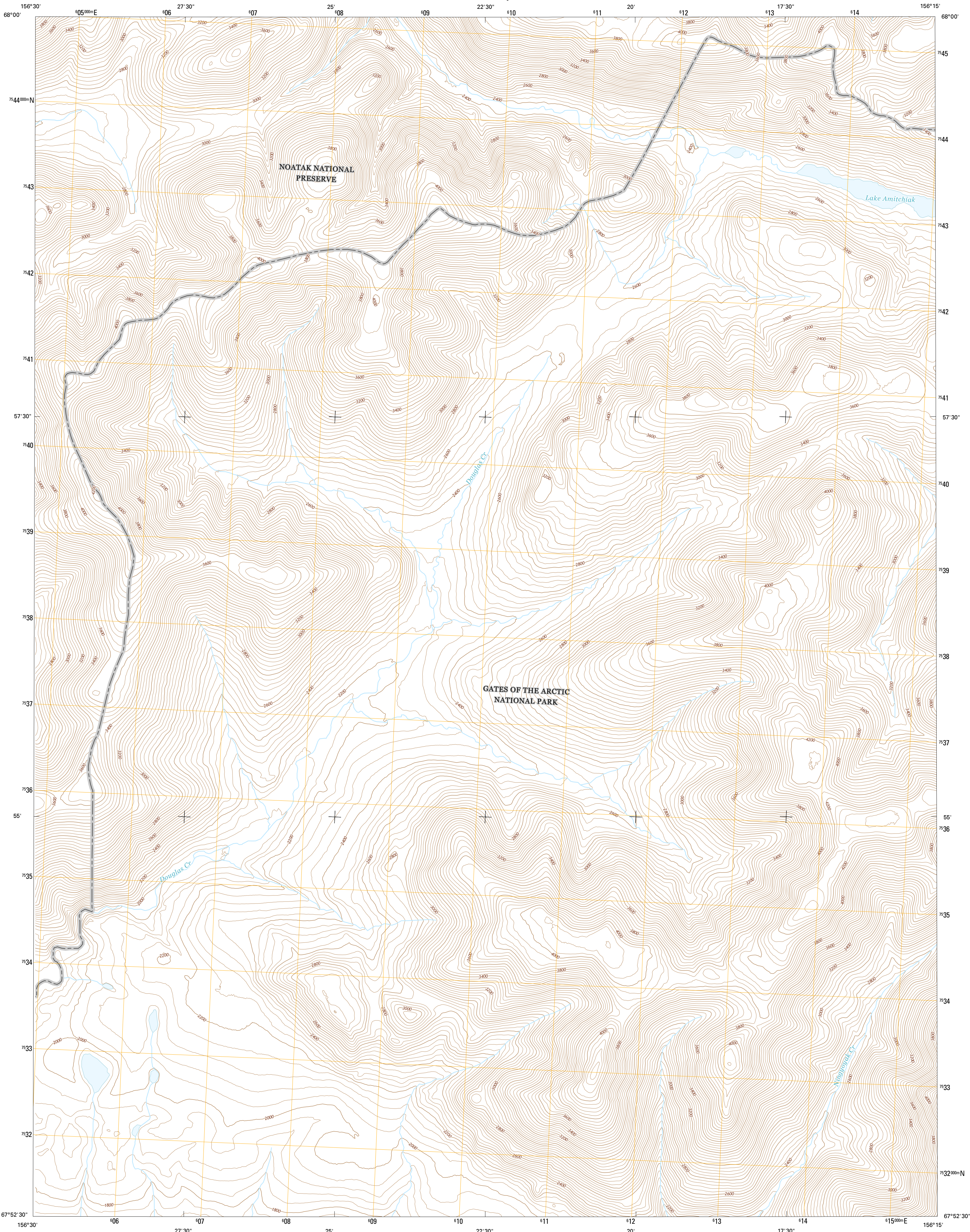




U.S. DEPARTMENT OF THE INTERIOR  
U.S. GEOLOGICAL SURVEY



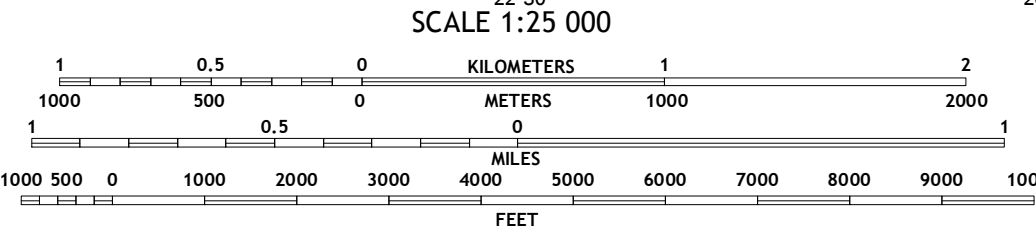
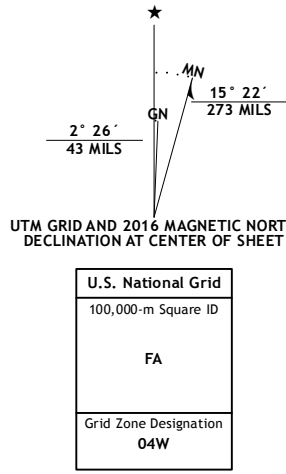
AMBLER RIVER D-1 NW QUADRANGLE  
ALASKA-NORTHWEST ARCTIC BOROUGH  
7.5-MINUTE SERIES



Produced by the United States Geological Survey  
North American Datum of 1983 (NAD83)  
World Geodetic System of 1984 (WGS84), Projection and  
1 000-meter grid: Universal Transverse Mercator, Zone 16W  
10 000-foot ticks: Alaska Coordinate System of 1983 (zone 6)

This map is not a legal document. Boundaries may be  
generalized for this map scale. Private lands within government  
reservations may not be shown. Obtain permission before  
entering private lands.

Imagery.....SPOTi, 2009 - 2015  
Roads.....Alaska Dept. of Transportation, 2014  
Names.....GNS, 2016  
Hydrography.....National Hydrography Dataset, 2010  
Contours.....National Elevation Dataset, 2016  
Boundaries.....Multiple sources; see metadata file, 1950 - 2016  
Public Land Survey System.....BLM, 2006 - 2008  
Wetlands.....FWS National Wetlands Inventory 1977 - 2014



QUADRANGLE LOCATION

1	2	3	1 Howard Pass (A-2) SE and (A-1) SW (A-1) SE and (A-1) SW
4	5	3 Howard Pass (A-1) SE	4 Ambler River (D-2) NE
6	7	8	5 Ambler River (D-1) NE
			6 Ambler River (D-1) SE
			7 Ambler River (D-1) SW
			8 Ambler River (D-1) SE

ROAD CLASSIFICATION		
Expressway	Local Connector	
Secondary Hwy	Local Road	
Ramp	4WD	
Interstate Route	US Route	State Route

AMBLER RIVER D-1 NW, AK  
2016

