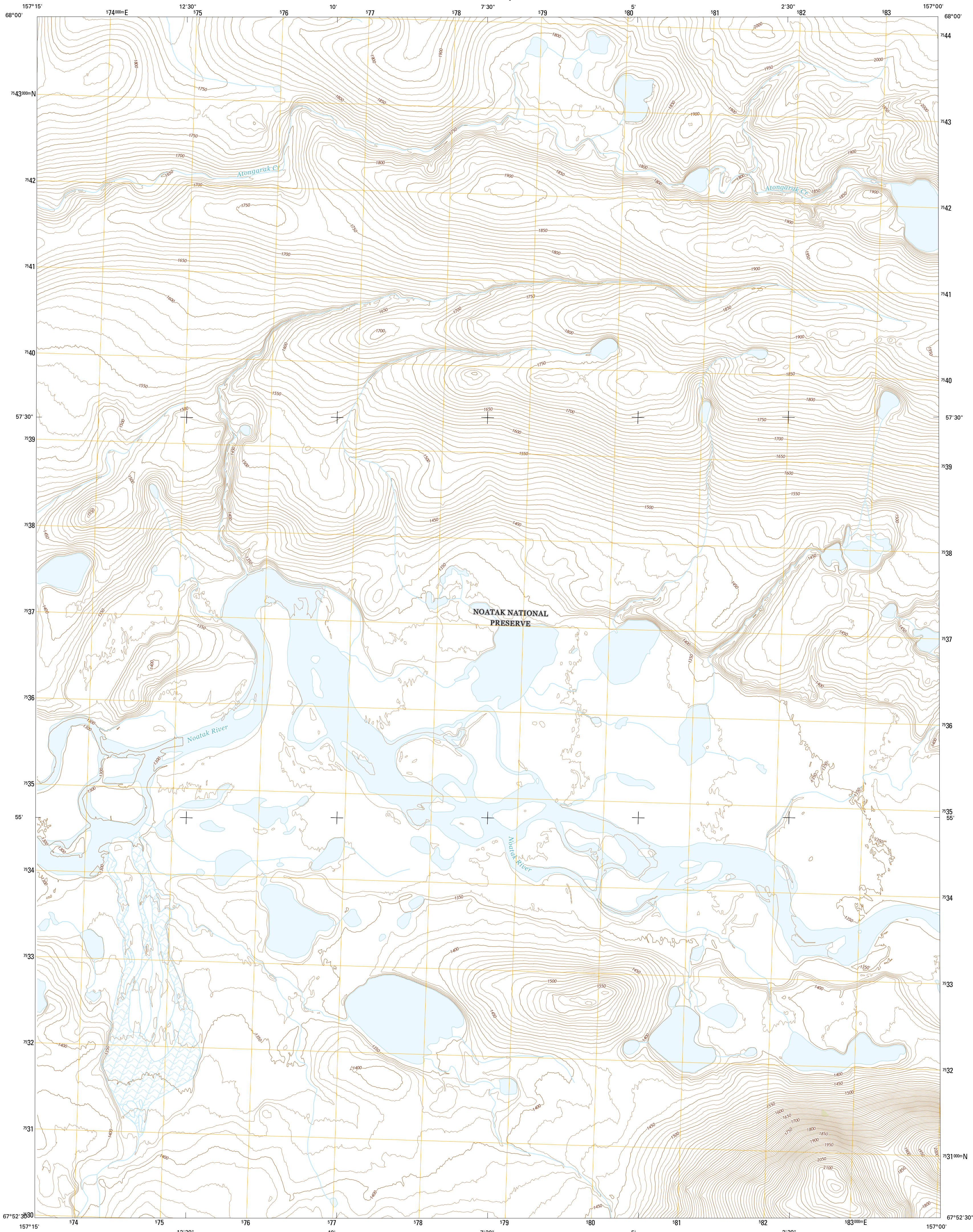




U.S. DEPARTMENT OF THE INTERIOR
U.S. GEOLOGICAL SURVEY



AMBLER RIVER D-3 NE QUADRANGLE
ALASKA-NORTHWEST ARCTIC BOROUGH
7.5-MINUTE SERIES

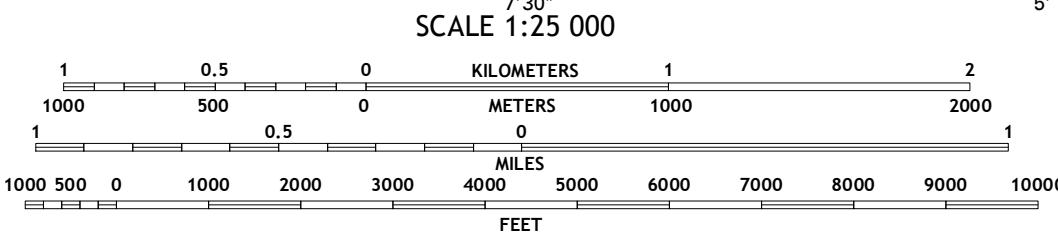
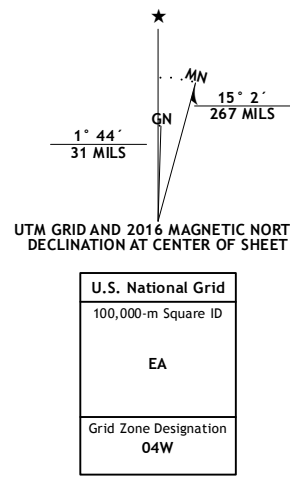


Produced by the United States Geological Survey

North American Datum of 1983 (NAD83)
World Geodetic System of 1984 (WGS84), Projection and
1 000-meter grid; Universal Transverse Mercator, Zone 6W
10 000-foot ticks; Alaska Coordinate System of 1983 (zone 6)

This map is not a legal document. Boundaries may be
generalized for this map scale. Private lands within government
reservations may not be shown. Obtain permission before
entering private lands.

Imagery.....SPOTC, 2009 - 2015
Roads.....Alaska Dept. of Transportation, 2014
Names.....GNIS, 2016
Hydrography.....National Hydrography Dataset, 2009
Contours.....National Elevation Dataset, 2013
Boundaries.....Multiple sources; see metadata file, 1950 - 2016
Public Land Survey System.....BLM, 2006 - 2008
Wetlands.....FWS National Wetlands Inventory 1977 - 2014

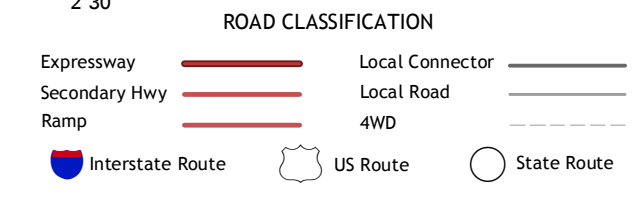


CONTOUR INTERVAL 10 FEET
NORTH AMERICAN VERTICAL DATUM OF 1988

This map was produced to conform with the
National Geospatial Program US Topo Product Standard, 2011.
A metadata file associated with this product is draft version 0.6.18



QUADRANGLE LOCATION



1	2	3
4	5	6
7	8	

ADJOINING QUADRANGLES

1 Howard Pass (A-3) SE
2 Howard Pass (A-3) SE
and (A-3) SW
3 Howard Pass (A-2) SE
and (A-2) SW
4 Ambler River (D-3) NW
5 Ambler River (D-3) NW
6 Ambler River (D-3) SW
7 Ambler River (D-3) SE
8 Ambler River (D-3) SW

AMBLER RIVER D-3 NE, AK
2016

