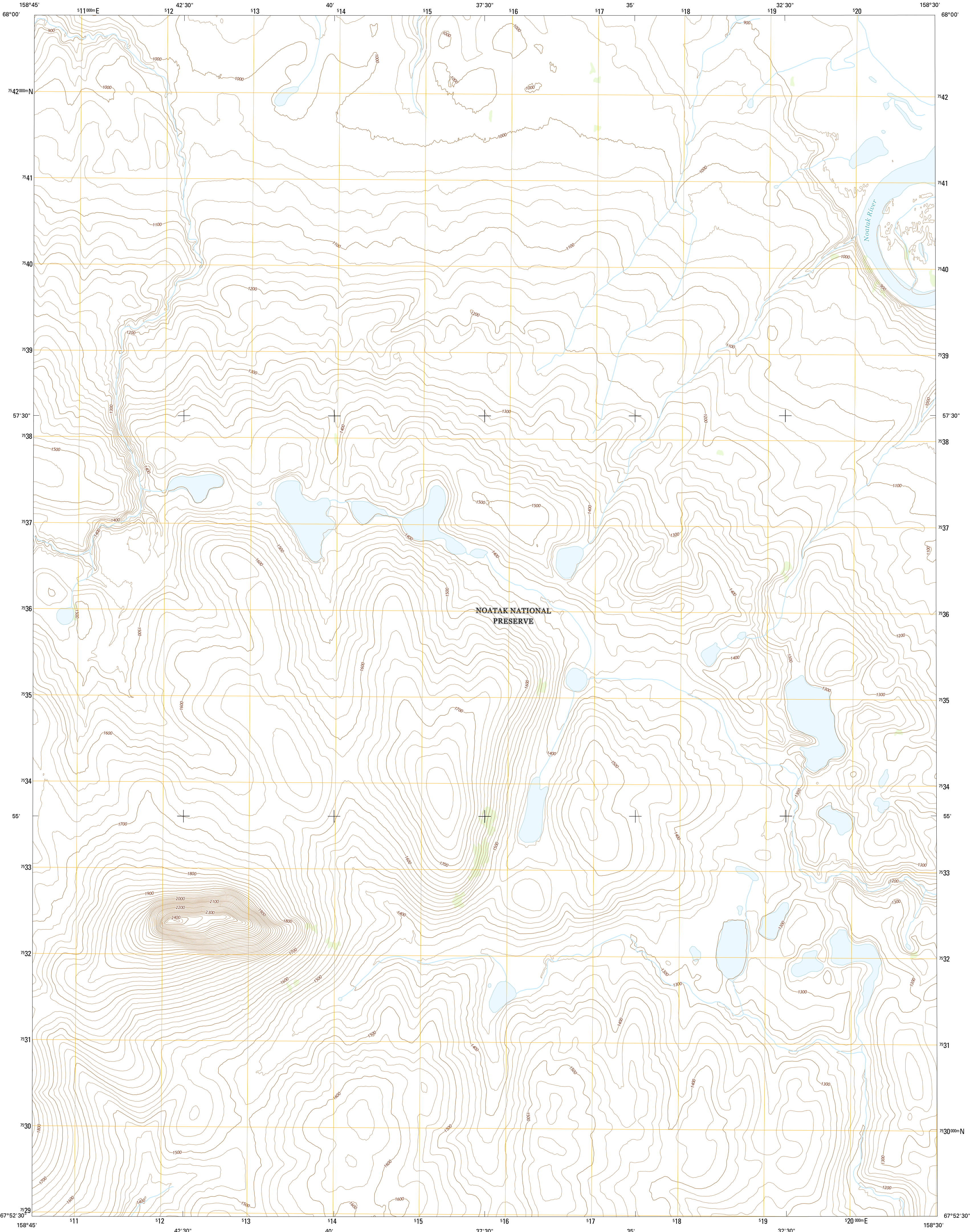




U.S. DEPARTMENT OF THE INTERIOR
U.S. GEOLOGICAL SURVEY



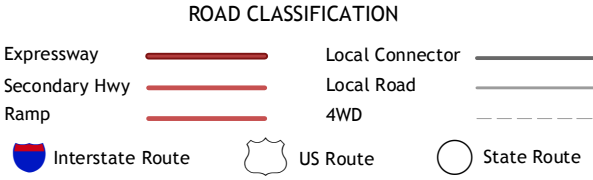
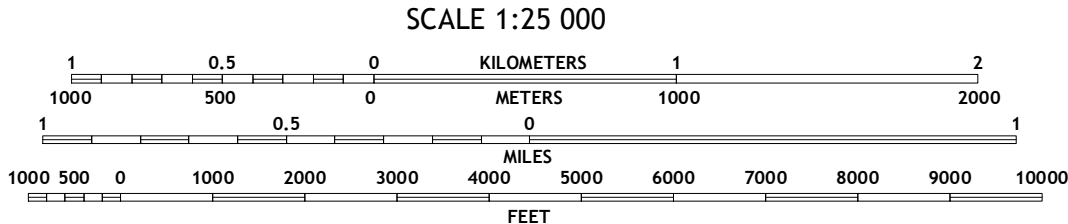
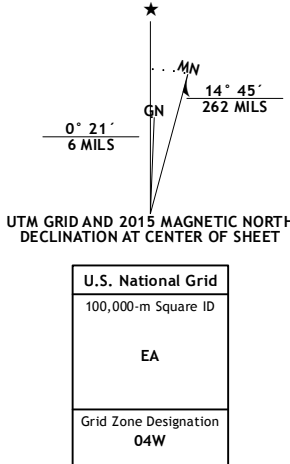
AMBLER RIVER D-6 NE QUADRANGLE
ALASKA-NORTHWEST ARCTIC BOROUGH
7.5-MINUTE SERIES



Produced by the United States Geological Survey
North American Datum of 1983 (NAD83)
World Geodetic System of 1984 (WGS84). Projection and
1 000-meter grid: Universal Transverse Mercator, Zone 04W

This map is not a legal document. Boundaries may be generalized
for this map scale. Private lands within government reservations
may not be shown. Obtain permission before entering private lands

Imagery.....SPOT, ©2009
Roads.....Alaska Dept. of Transportation, 2013
Names.....GNIS, 2015
Hydrography.....National Hydrography Dataset, 2009
Contours.....National Elevation Dataset, 2013
Boundaries.....Multiple sources; see metadata file, 1950 - 2015
Public Land Survey System.....BLM, 2006 - 2008



1	2	3
4	5	6
7	8	9

1 Howard Pass (A-5) SW
2 Howard Pass (A-5) SE
and (A-5) SW
3 Howard Pass (A-4) SW
and (A-5) SE
4 Ambler River (D-6) NW
5 Ambler River (D-5) NW
6 Ambler River (D-6) SW
7 Ambler River (D-6) SE
8 Ambler River (D-5) SW

AMBLER RIVER D-6 NE, AK
2015

