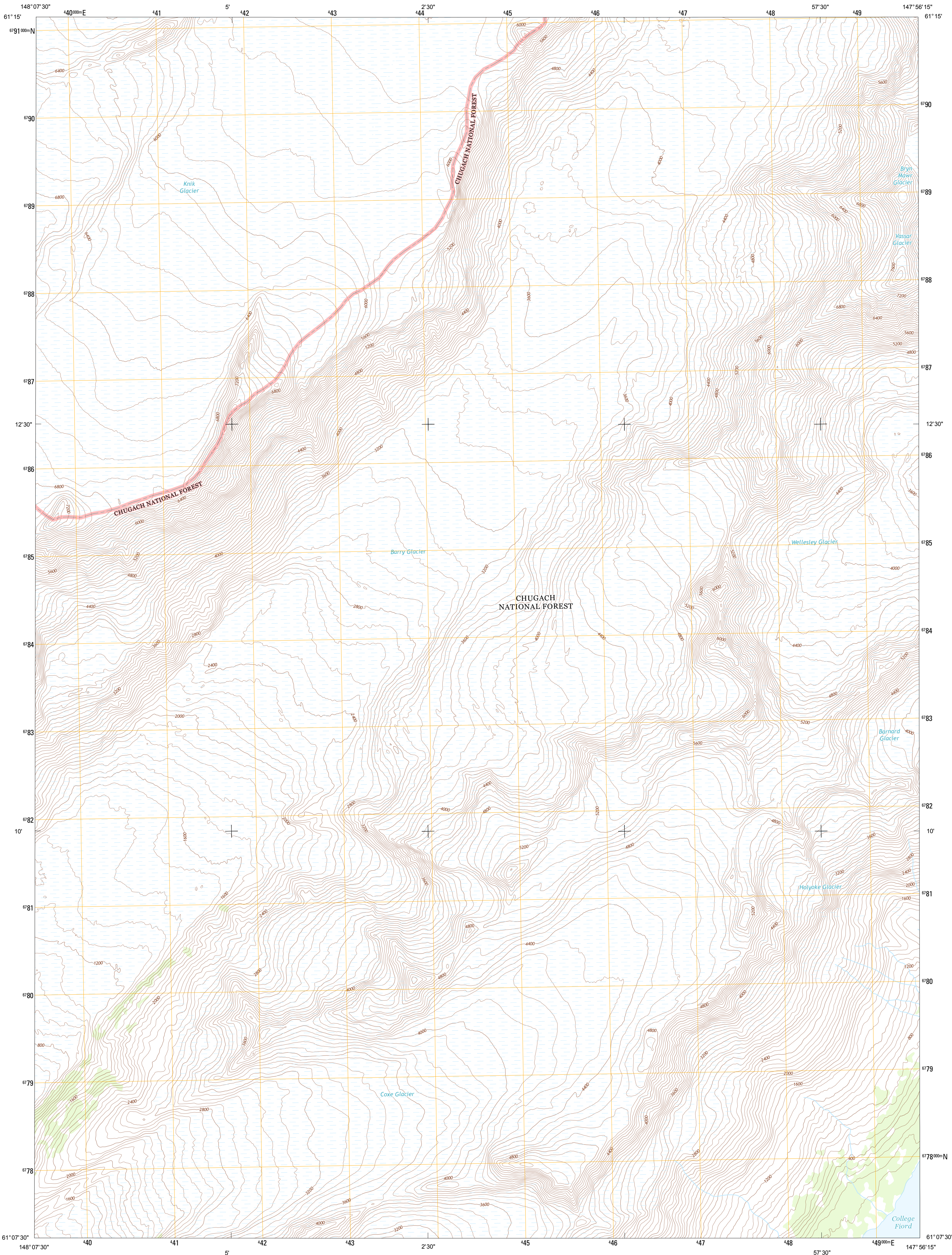




U.S. DEPARTMENT OF THE INTERIOR
U. S. GEOLOGICAL SURVEY

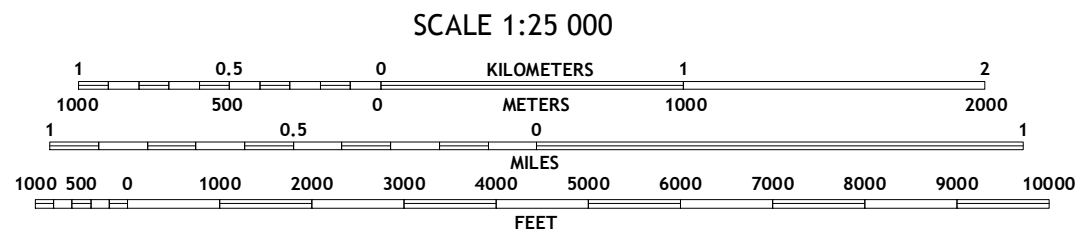
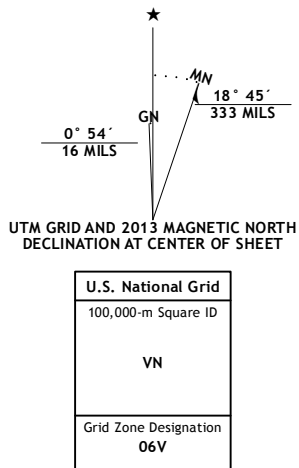


ANCHORAGE A-3 NW QUADRANGLE
ALASKA
7.5-MINUTE SERIES



Produced by the United States Geological Survey
North American Datum of 1983 (NAD83)
World Geodetic System of 1984 (WGS84). Projection and
1 000-meter grid: Universal Transverse Mercator, Zone 06V

Imagery.....SPOT, ©2010
Roads.....TomTom
Roads within US Forest Service Lands.....FS Topo Data
with limited Forest Service updates, 2013
Names.....GNIS, 2013
Hydrography.....National Hydrography Dataset, 2010
Contour.....National Elevation Dataset, 2013
Boundaries.....Census, IBC, USGS, 1972 - 2012
Public Land Survey System.....BLM, 2006 - 2008



ROAD CLASSIFICATION

Expressway	Local Connector
Secondary Hwy	Local Road
Ramp	4WD
Interstate Route	US Route
FS Primary Route	FS Passenger Route
	FS High Clearance Route
	State Route

CONTOUR INTERVAL 80 FEET
NORTH AMERICAN VERTICAL DATUM OF 1988
This map was produced to conform with the
National Geospatial Program US Topo Product Standard, 2011.
A metadata file associated with this product is draft version 0.6.10.

1	2	3
4	5	6
7	8	9

1 Anchorage (B-4) SE
2 Anchorage (B-3) SW
3 Anchorage (B-3) SE
4 Anchorage (A-4) NE
5 Anchorage (A-3) NE
6 Anchorage (A-4) SE
7 Anchorage (A-3) SW
8 Anchorage (A-3) SE

Check with local Forest Service unit
for current travel conditions and restrictions.

ANCHORAGE A-3 NW, AK
2013

