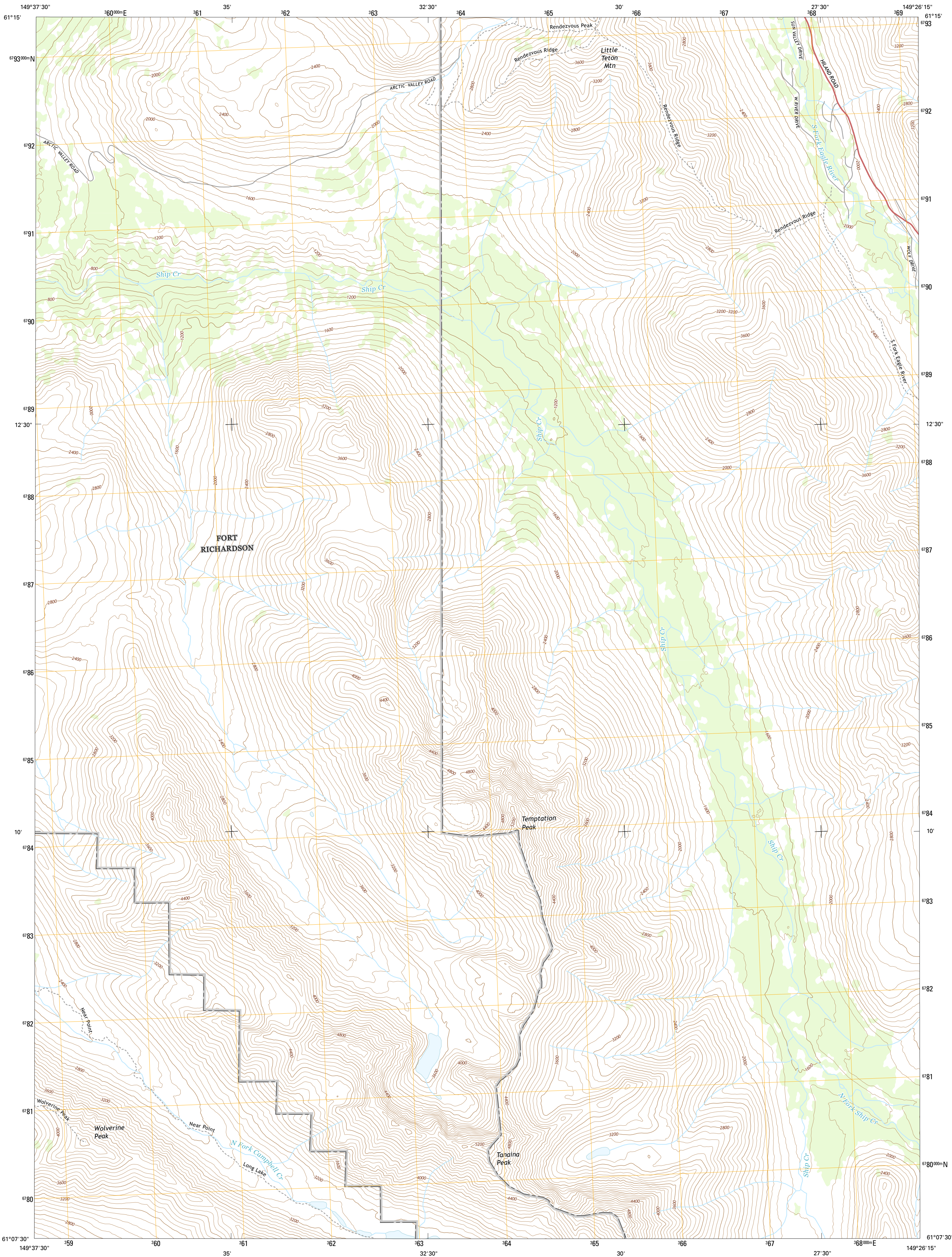




U.S. DEPARTMENT OF THE INTERIOR
U.S. GEOLOGICAL SURVEY



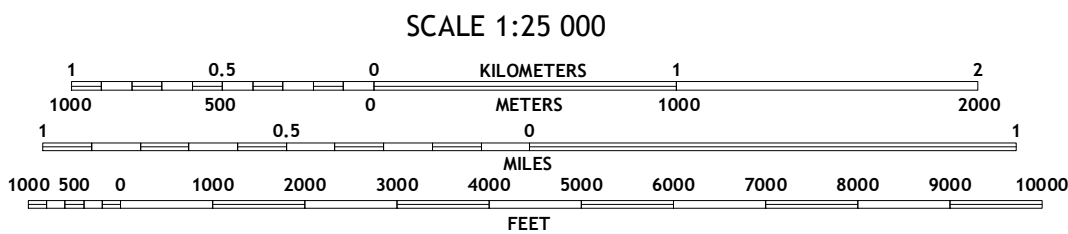
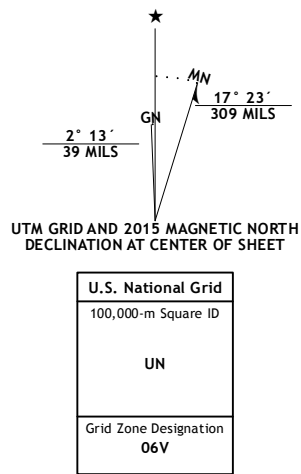
ANCHORAGE A-7 NW QUADRANGLE
ALASKA-ANCHORAGE MUNICIPALITY
7.5-MINUTE SERIES



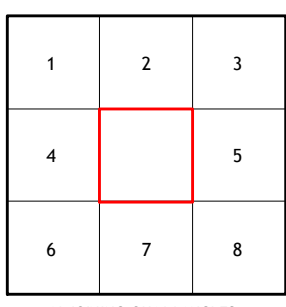
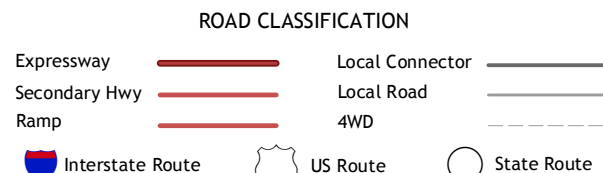
Produced by the United States Geological Survey
North American Datum of 1983 (NAD83)
World Geodetic System of 1984 (WGS84). Projection and
1 000-meter grid: Universal Transverse Mercator, Zone 06V

This map is not a legal document. Boundaries may be generalized
for this map scale. Private lands within government reservations
may not be shown. Obtain permission before entering private lands

Imagery.....SPOT, ©2010
Roads.....Alaska Dept. of Transportation, 2013
Names.....GNIS, 2015
Hydrography.....National Hydrography Dataset, 2010
Contours.....National Elevation Dataset, 2013
Boundaries.....Multiple sources; see metadata file, 1950 - 2015
Public Land Survey System.....BLM, 2006 - 2008



QUADRANGLE LOCATION



1 Anchorage (B-8) SE
2 Anchorage (B-7) SW
3 Anchorage (B-7) SE
4 Anchorage (A-8) NE
5 Anchorage (A-7) NE
6 Anchorage (A-8) SE
7 Anchorage (A-7) SW
8 Anchorage (A-7) SE

ANCHORAGE A-7 NW, AK
2015

