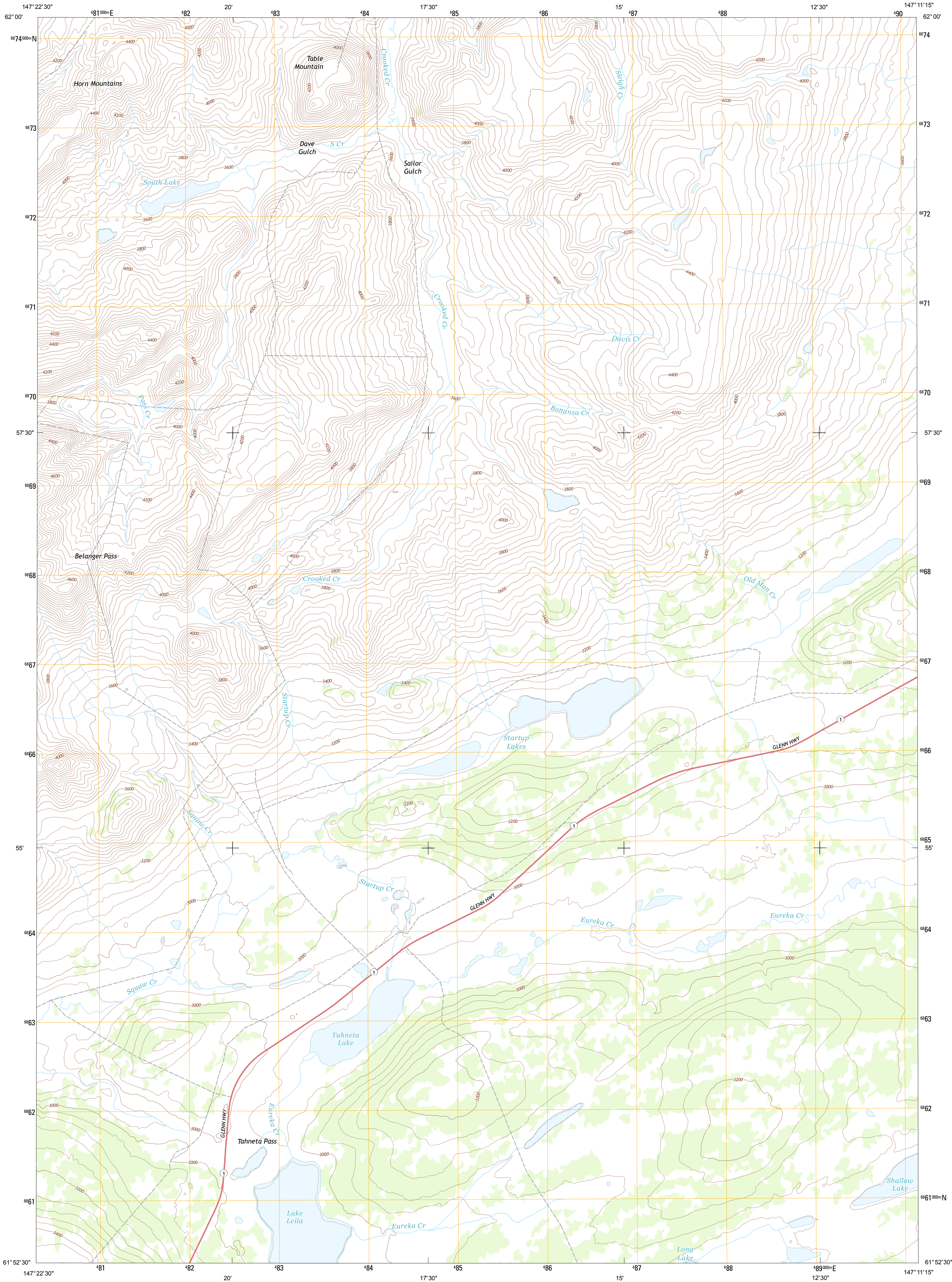




U.S. DEPARTMENT OF THE INTERIOR
U. S. GEOLOGICAL SURVEY

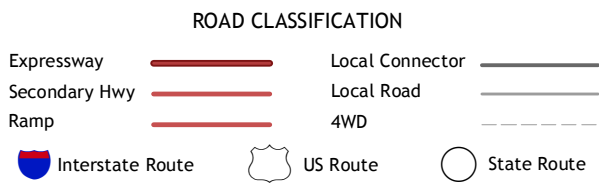
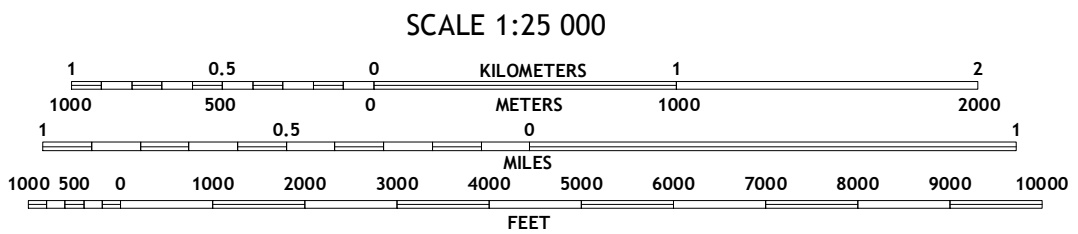
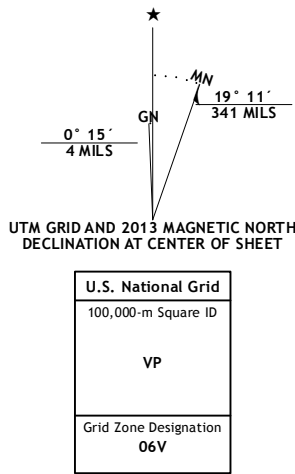


ANCHORAGE D-1 NW QUADRANGLE
ALASKA-MATANUSKA-SUSITNA BOROUGH
7.5-MINUTE SERIES



Produced by the United States Geological Survey
North American Datum of 1983 (NAD83)
World Geodetic System of 1984 (WGS84). Projection and
1 000-meter grid: Universal Transverse Mercator, Zone 06V

Imagery.....SPOT, ©2010 - 2011
Roads.....©2006-2013 TomTom
Names.....GNIS, 2013
Hydrography.....National Hydrography Dataset, 2010
Contours.....National Elevation Dataset, 2013
Boundaries.....Census, IBWC, IBC, USGS, 1972 - 2012
Public Land Survey System.....BLM, 2006 - 2008



CONTOUR INTERVAL 40 FEET
NORTH AMERICAN VERTICAL DATUM OF 1988

This map was produced to conform with the
National Geospatial Program US Topo Product Standard, 2011.
A metadata file associated with this product is draft version 0.6.10

| | | |
|---|---|---|
| 1 | 2 | 3 |
| 4 | 5 | 6 |
| 7 | 8 | 9 |

ADJOINING QUADRANGLES

1 Talkeetna Mountains (A-2) SE
and (A-1) SW
2 Talkeetna Mountains (A-1) SE
and (A-1) SW
3 Talkeetna Mountains (A-1) SE
4 Anchorage (D-2) NE
5 Anchorage (D-1) NE
6 Anchorage (D-2) SE
7 Anchorage (D-1) SW
8 Anchorage (D-1) SE

ANCHORAGE D-1 NW, AK
2013

