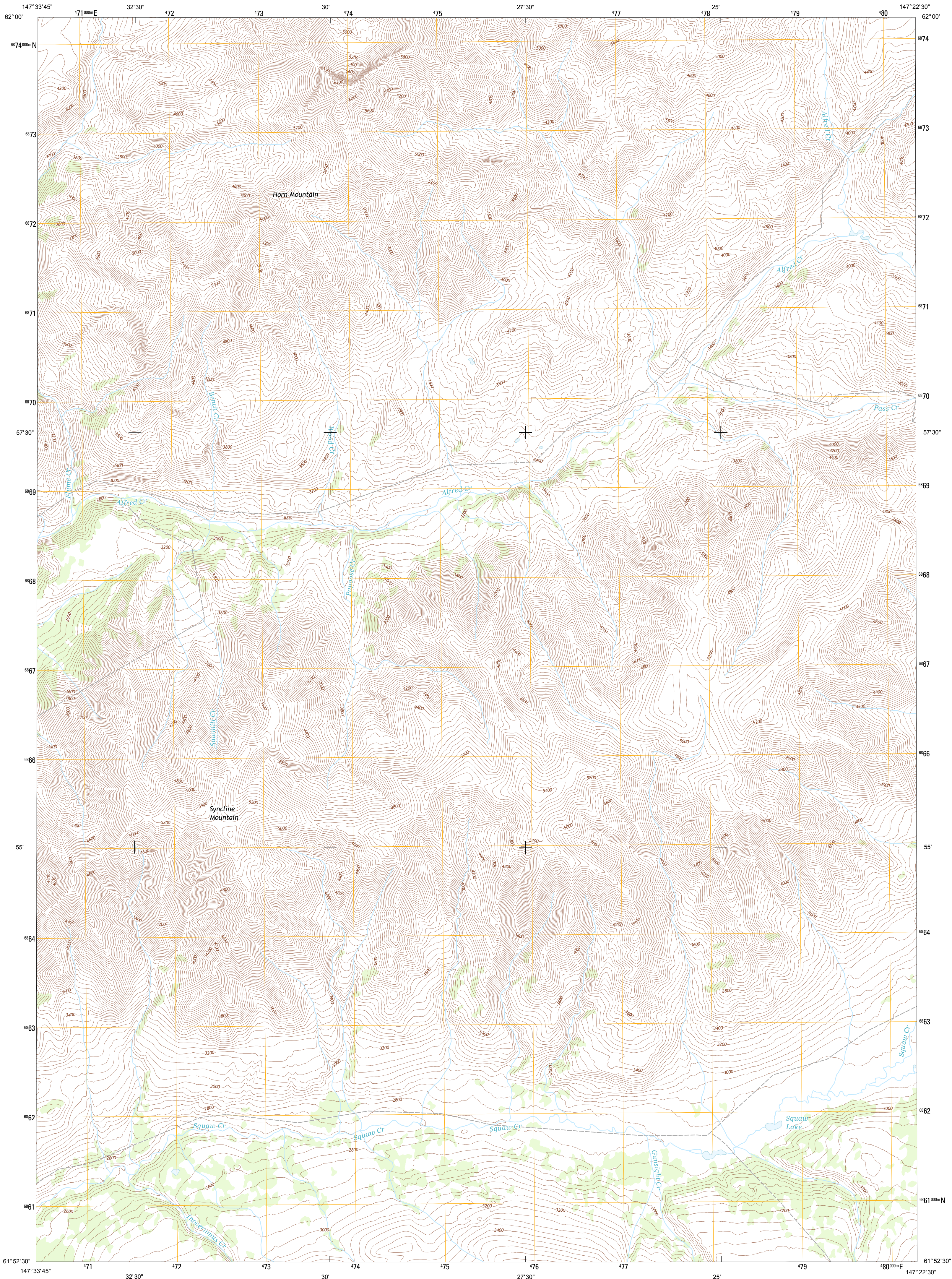




U.S. DEPARTMENT OF THE INTERIOR
U. S. GEOLOGICAL SURVEY

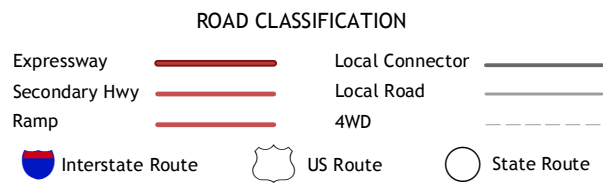
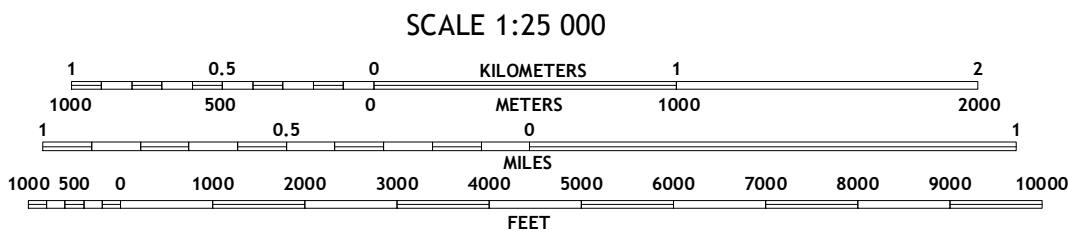
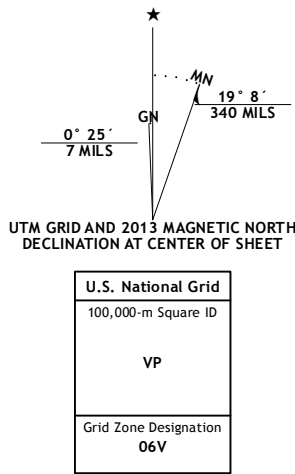


ANCHORAGE D-2 NE QUADRANGLE
ALASKA-MATANUSKA-SUSITNA BOROUGH
7.5-MINUTE SERIES



Produced by the United States Geological Survey
North American Datum of 1983 (NAD83)
World Geodetic System of 1984 (WGS84). Projection and
1 000-meter grid: Universal Transverse Mercator, Zone 06V

Imagery.....SPOT, ©2010 - 2011
Roads.....©2006-2013 TomTom
Names.....GNIS, 2013
Hydrography.....National Hydrography Dataset, 2010
Contours.....National Elevation Dataset, 2013
Boundaries.....Census, IBWC, IBC, USGS, 1972 - 2012
Public Land Survey System.....BLM, 2006 - 2008



| | | |
|---|---|---|
| 1 | 2 | 3 |
| 4 | | 5 |
| 6 | 7 | 8 |

- 1 Talkeetna Mountains (A-2) SE
- 2 Talkeetna Mountains (A-2) SE and (A-1) SW
- 3 Talkeetna Mountains (A-1) SE and (A-1) SW
- 4 Anchorage (D-2) NW
- 5 Anchorage (D-1) NW
- 6 Anchorage (D-2) SW
- 7 Anchorage (D-2) SE
- 8 Anchorage (D-1) SW

ANCHORAGE D-2 NE, AK
2013

