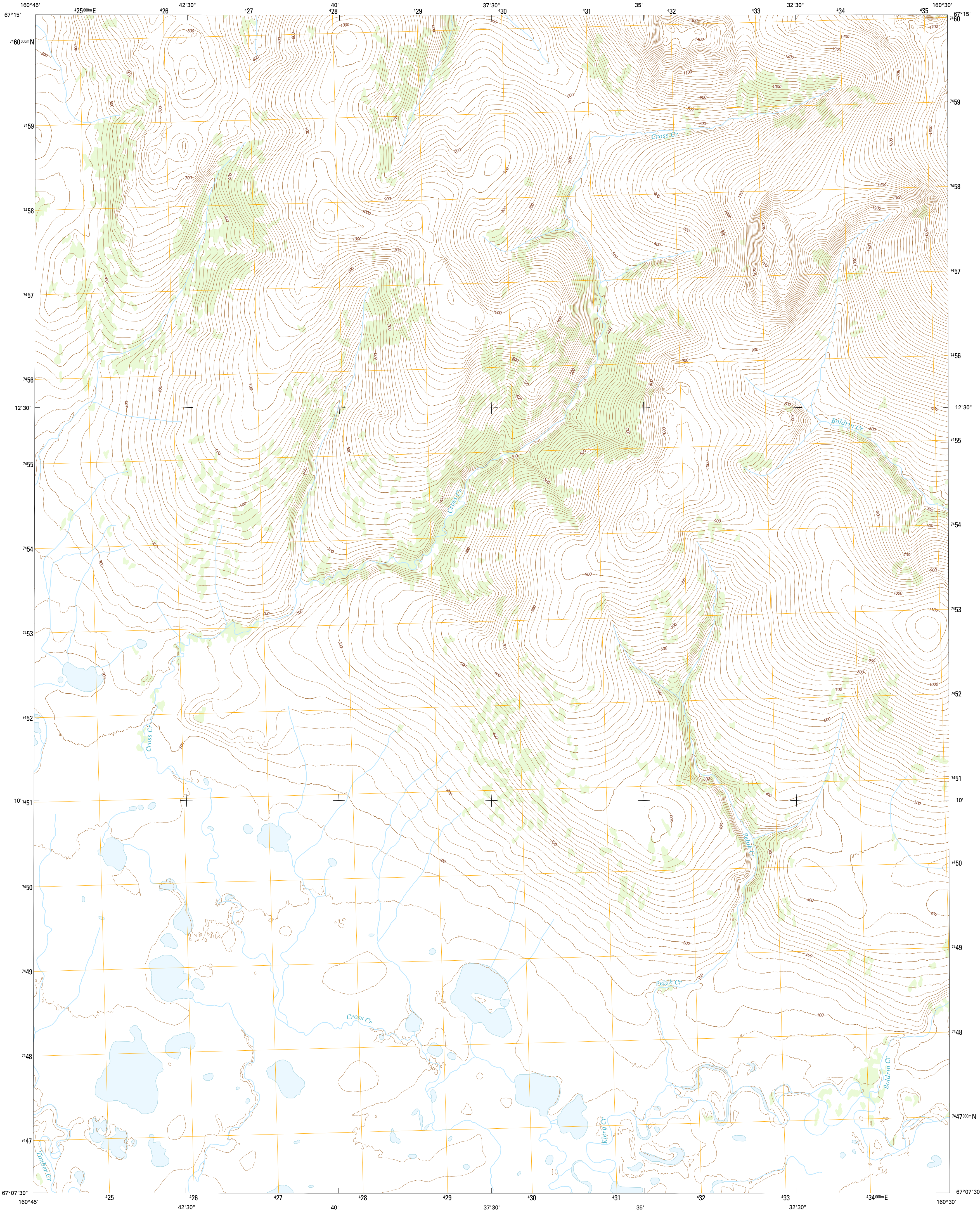




U.S. DEPARTMENT OF THE INTERIOR  
U.S. GEOLOGICAL SURVEY



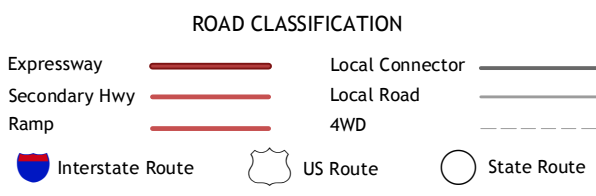
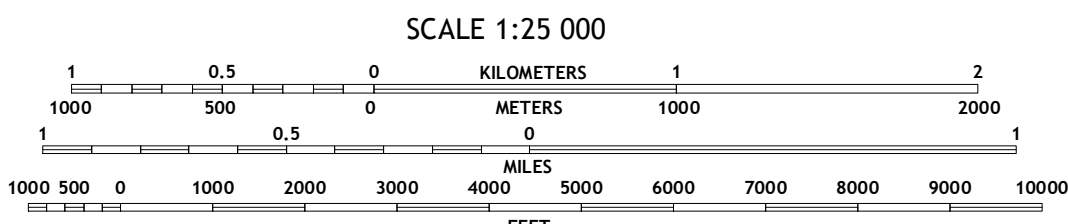
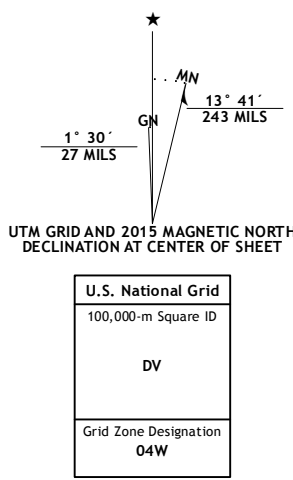
BAIRD MOUNTAINS A-4 NE QUADRANGLE  
ALASKA-NORTHWEST ARCTIC BOROUGH  
7.5-MINUTE SERIES



Produced by the United States Geological Survey  
North American Datum of 1983 (NAD83)  
World Geodetic System of 1984 (WGS84). Projection and  
1 000-meter grid: Universal Transverse Mercator, Zone 04W

This map is not a legal document. Boundaries may be generalized for  
this map scale. Private lands within government reservations  
may not be shown. Obtain permission before entering private lands

Imagery.....SPOT, ©2009  
Roads.....Alaska Dept. of Transportation, 2013  
Names.....GNIS, 2015  
Hydrography.....National Hydrography Dataset, 2009  
Contours.....National Elevation Dataset, 2013  
Boundaries.....Multiple sources; see metadata file, 1950 - 2015  
Public Land Survey System.....BLM, 2006 - 2008



1	2	3
4		5
6	7	8

ADJOINING QUADRANGLES

1 Baird Mountains (B-4) SW  
2 Baird Mountains (B-4) SE  
3 Baird Mountains (B-3) SW  
4 Baird Mountains (A-4) NW  
5 Baird Mountains (A-3) NW  
6 Baird Mountains (A-4) SW  
7 Baird Mountains (A-4) SE  
8 Baird Mountains (A-3) SW

BAIRD MOUNTAINS A-4 NE, AK  
2015

