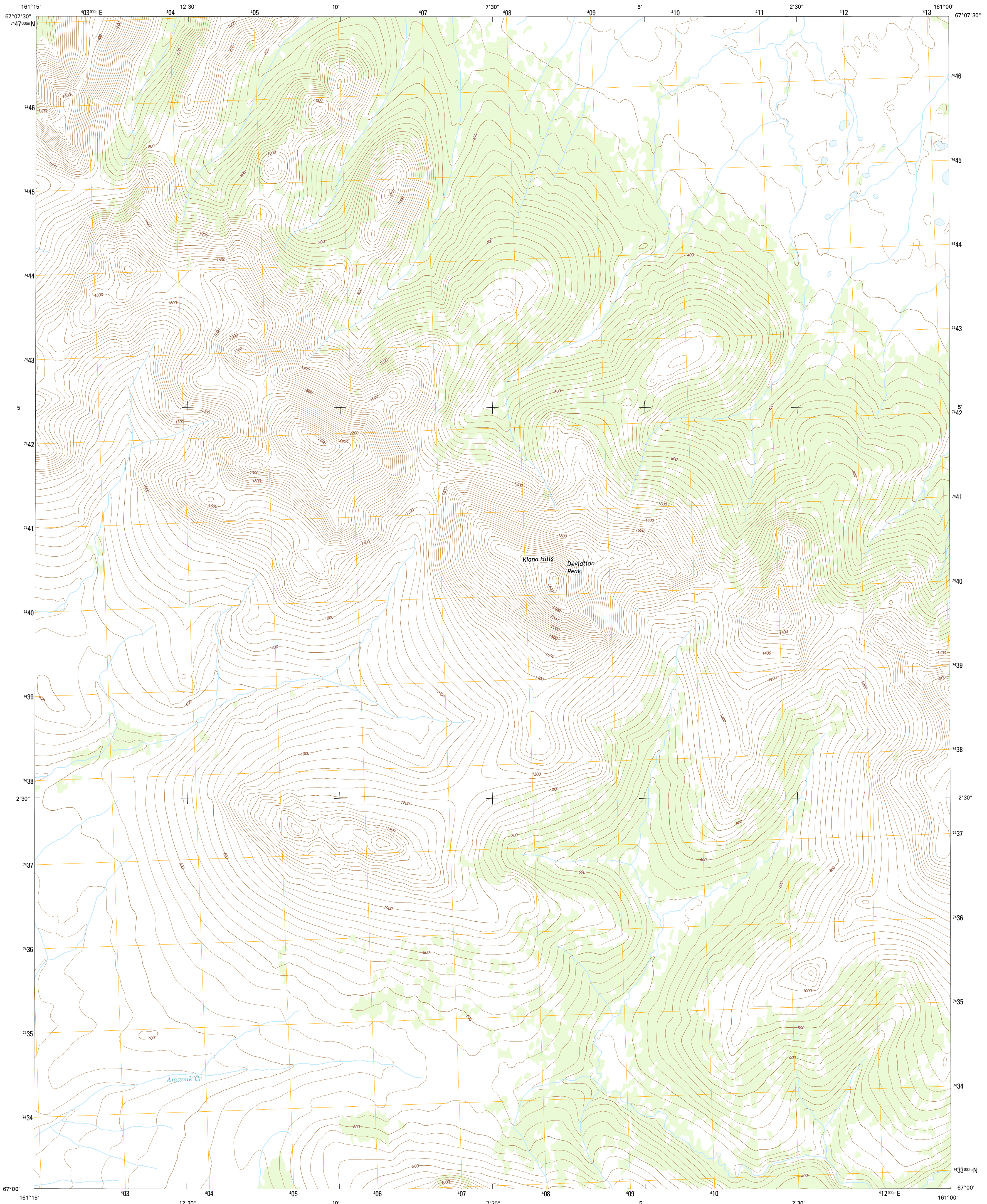




U.S. DEPARTMENT OF THE INTERIOR
U.S. GEOLOGICAL SURVEY



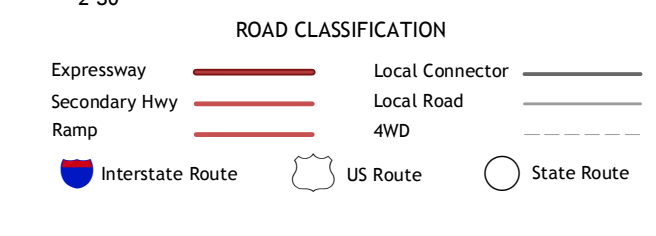
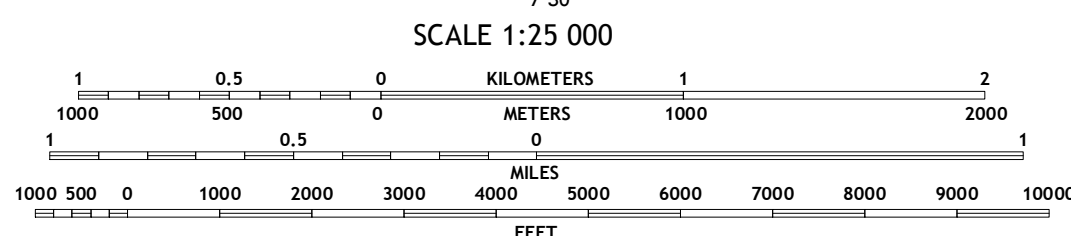
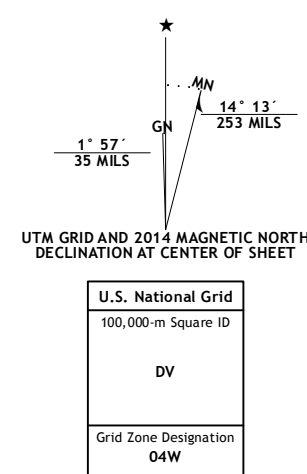
BAIRD MOUNTAINS A-5 SE QUADRANGLE
ALASKA-NORTHWEST ARCTIC BOROUGH
7.5-MINUTE SERIES



Produced by the United States Geological Survey
North American Datum of 1983 (NAD83)
World Geodetic System of 1984 (WGS84). Projection and
1 000-meter grid: Universal Transverse Mercator, Zone 04W

This map is not a legal document. Boundaries may be generalized for this map scale. Private lands within government reservations may not be shown. Obtain permission before entering private lands.

Images.....SPOT, ©2009
Roads.....Alaska Dept. of Transportation, 2013
Names.....GNIS, 2013
Hydrography.....National Hydrography Dataset, 2009
Contours.....National Elevation Dataset, 2013
Boundaries.....Multiple sources; see metadata file, 1950 - 2012
Public Land Survey System.....BLM, 2006 - 2008



CONTOUR INTERVAL 40 FEET
NORTH AMERICAN VERTICAL DATUM OF 1988

This map was produced to conform with the
National Geospatial Program US Topo Product Standard, 2011.
A metadata file associated with this product is draft version 0.6.17.

1	2	3
4	5	6
7	8	

ADJOINING QUADRANGLES

- 1 Baird Mountains (A-5) NW
- 2 Baird Mountains (A-5) NE
- 3 Baird Mountains (A-4) NW
- 4 Baird Mountains (A-5) SW
- 5 Baird Mountains (A-4) SW
- 6 Selawik (D-5) NW
- 7 Selawik (D-5) NE
- 8 Selawik (D-4) NW

BAIRD MOUNTAINS A-5 SE, AK
2014

