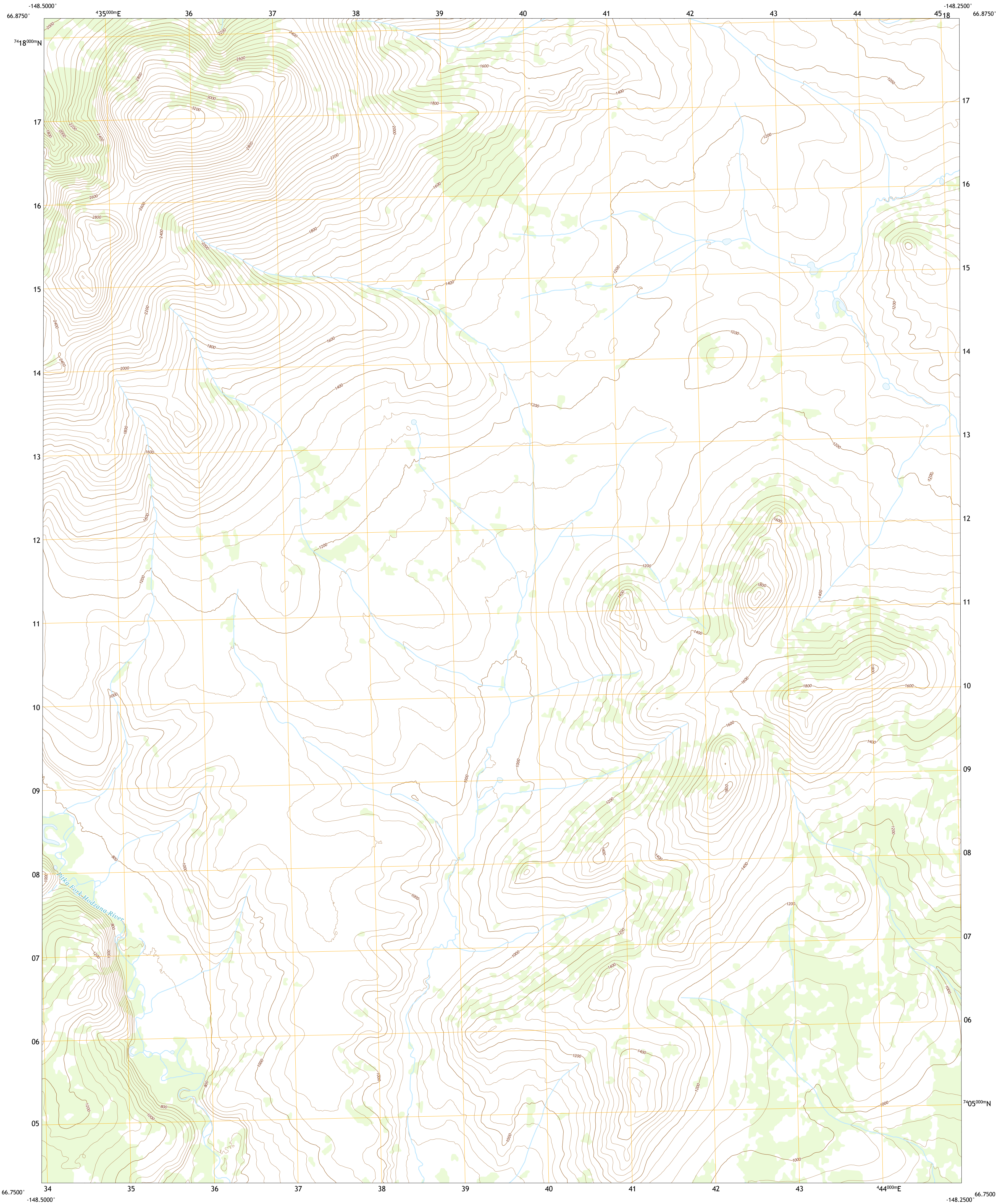




U.S. DEPARTMENT OF THE INTERIOR
U.S. GEOLOGICAL SURVEY

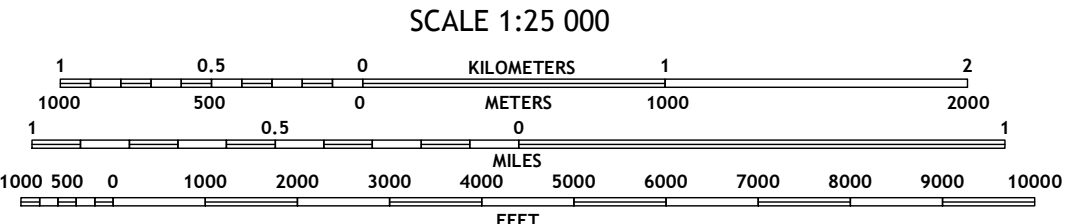
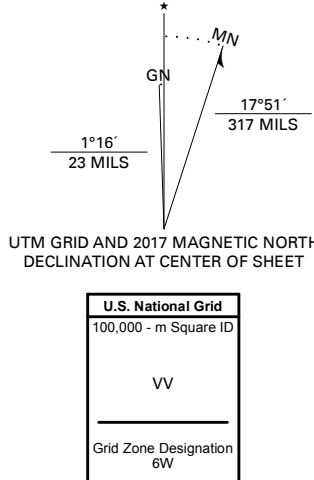


BEAVER D-3 SW QUADRANGLE
ALASKA - YUKON-KOYUKUK CENSUS AREA
7.5-MINUTE SERIES



Produced by the United States Geological Survey

North American Datum of 1983 (NAD83)
World Geodetic System of 1984 (WGS84) Projection and
1 000-meter grid/Universal Transverse Mercator, Zone 6W
This map is not a legal document. Boundaries may be
generalized for this map scale. Private lands within government
reservations may not be shown. Obtain permission before
entering private lands.
Imagery.....SPOT, © May 2009
Roads.....Alaska Dept. of Transportation, Not Available
Names.....GNIS, Not Available
Hydrography.....National Hydrography Dataset, 2001 - 2016
Contours.....National Elevation Dataset, 2015
Boundaries.....Multiple sources: see metadata file 2014 - 2016
Public Land Survey System.....BLM, 2008 - 2017
Wetlands.....FWS National Wetlands Inventory Not Available



1	2	3
4	5	6
7	8	9

1 Beaver D-4 NE
2 Beaver D-3 NW
3 Beaver D-3 NE
4 Beaver D-4 SE
5 Beaver D-3 SE
6 Beaver C-4 NE
7 Beaver C-3 NW
8 Beaver C-3 NE

ROAD CLASSIFICATION	
Expressway	Local Connector
Secondary Hwy	Local Road
Ramp	4WD
Interstate Route	US Route
	State Route

BEAVER D-3 SW, AK
2017

