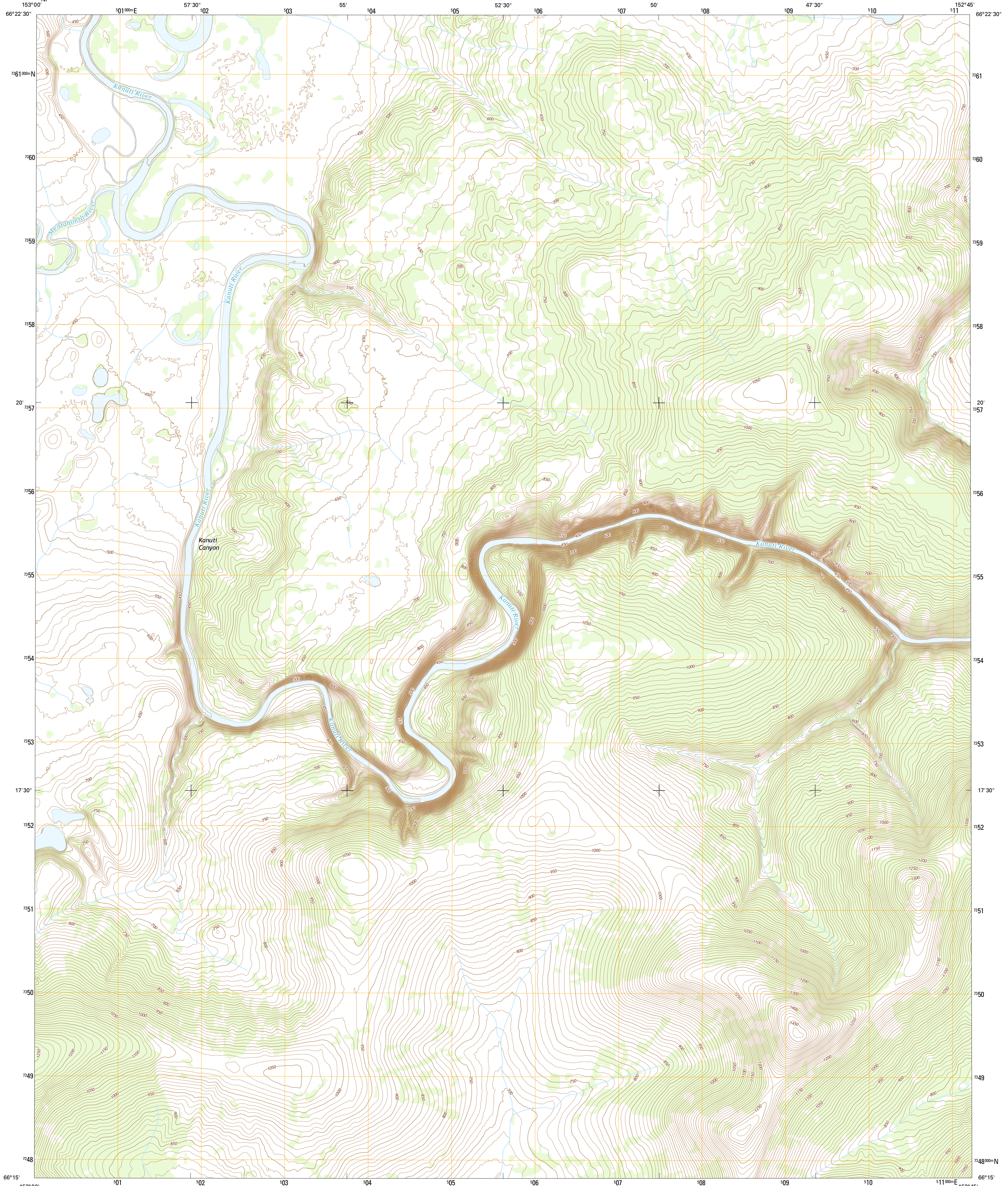




U.S. DEPARTMENT OF THE INTERIOR
U.S. GEOLOGICAL SURVEY



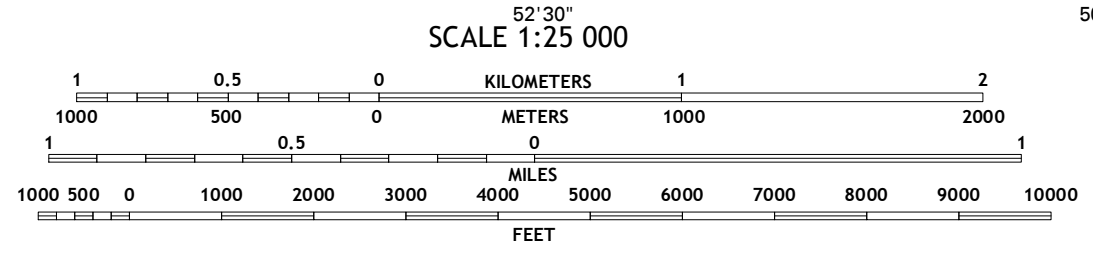
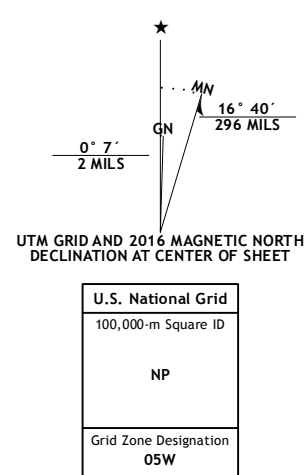
BETTLES B-6 SW QUADRANGLE
ALASKA
7.5-MINUTE SERIES



Produced by the United States Geological Survey
North American Datum of 1983 (NAD83)
World Geodetic System of 1984 (WGS84) Projection and
1 000-meter grid; Universal Transverse Mercator, Zone 09W
10 000-foot ticks; Alaska Coordinate System of 1983 (zone 4)

This map is not a legal document. Boundaries may be generalized for this map scale. Private lands within government reservations may not be shown. Obtain permission before entering private lands.

Image: SPOT, 2009 - 2015
Roads: Alaska Dept. of Transportation, 2014
Names: GNIS, 2016
Hydrography: National Hydrography Dataset, 2010
Contours: National Elevation Dataset, 2015
Boundaries: Multiple sources; see metadata file, 1950 - 2016
Public Land Survey System: BLM, 2006 - 2008
Wetlands: FWS National Wetlands Inventory 1977 - 2014



QUADRANGLE LOCATOR

ROAD CLASSIFICATION

| | |
|------------------|-----------------|
| Expressway | Local Connector |
| Secondary Hwy | Local Road |
| Ramp | 4WD |
| Interstate Route | US Route |
| | State Route |

| | | | |
|---|---|--------------------|--------------------|
| 1 | 2 | 3 | 1 Hughes (B-1) NE |
| 4 | 5 | 2 Bettles (B-6) NW | 2 Bettles (B-6) NE |
| 6 | 7 | 3 Bettles (B-6) SE | 4 Hughes (B-1) SE |
| | | 4 Hughes (B-6) SE | 5 Bettles (B-6) SE |
| | | 5 Bettles (A-1) NE | 6 Hughes (A-1) NE |
| | | 6 Bettles (A-6) NW | 7 Bettles (A-6) NW |
| | | 7 Bettles (A-6) NE | 8 Bettles (A-6) NE |

ADJOINING QUADRANGLES

CONTOUR INTERVAL 10 FEET
NORTH AMERICAN DATUM OF 1988

This map was produced to conform with the
National Geospatial Program US Topo Product Standard, 2011.
A metadata file associated with this product is draft version 0.6.18

BETTLES B-6 SW, AK
2016



NSN 7 6 4 3 0 1 6 9 4 9 2 0
NCA REF. NO. U.S.G.S. K 3 3 7 8 7