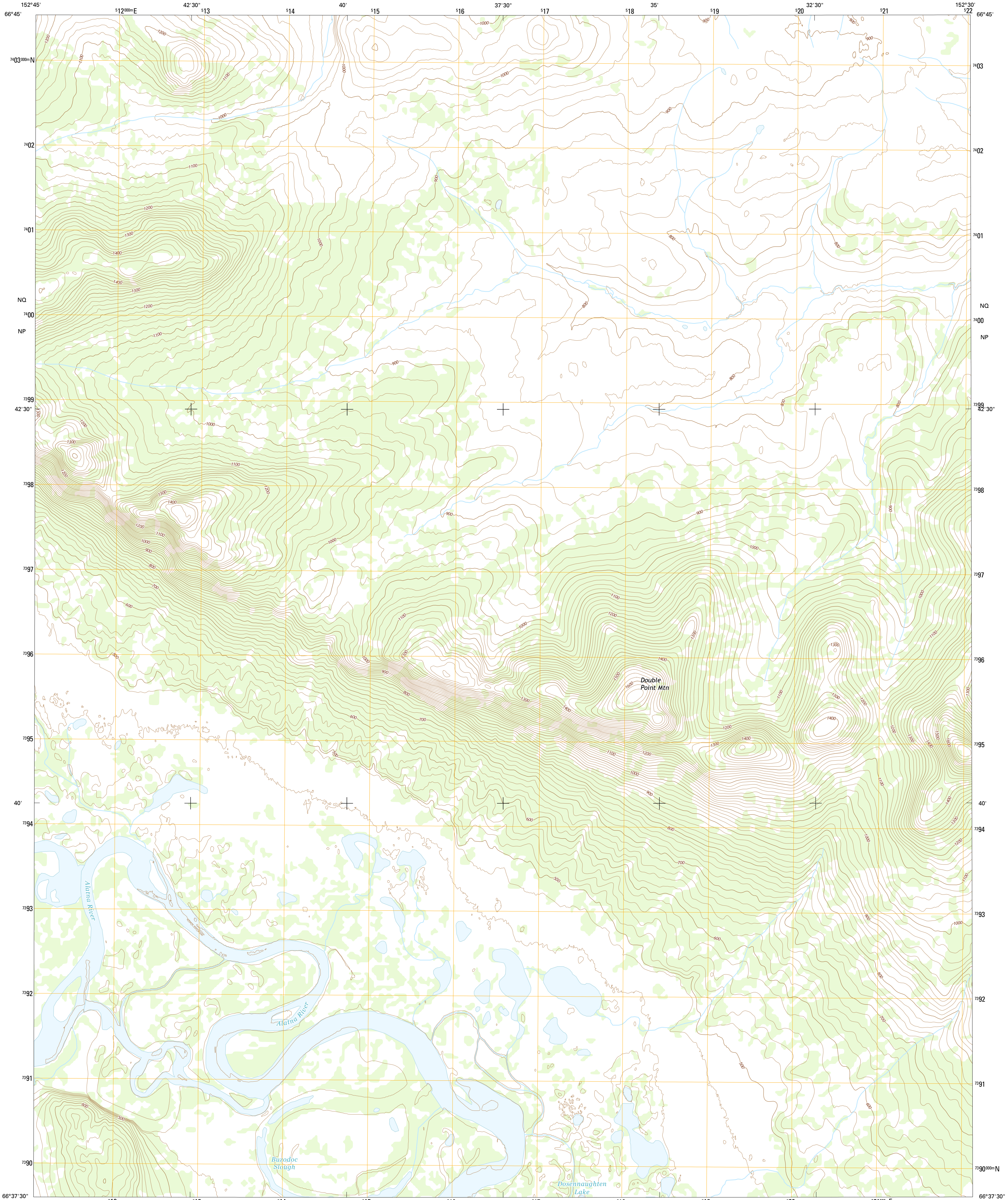




U.S. DEPARTMENT OF THE INTERIOR  
U.S. GEOLOGICAL SURVEY



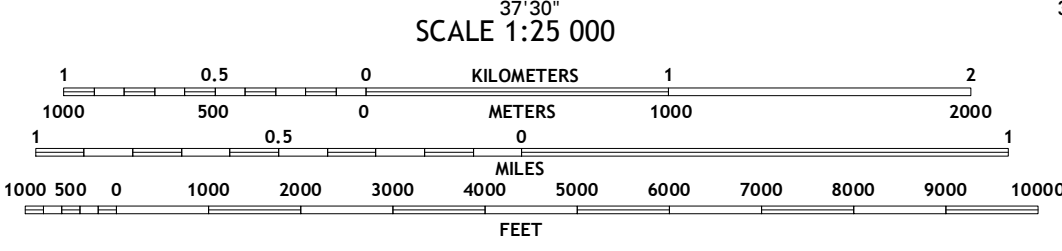
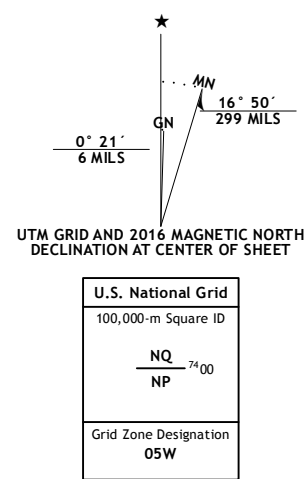
BETTLES C-6 NE QUADRANGLE  
ALASKA  
7.5-MINUTE SERIES



Produced by the United States Geological Survey  
North American Datum of 1983 (NAD83)  
World Geodetic System of 1984 (WGS84) Projection and  
1 000-meter grid: Universal Transverse Mercator, Zone 50W  
10 000-foot ticks: Alaska Coordinate System of 1983 (zone 4)

This map is not a legal document. Boundaries may be generalized for this map scale. Private lands within government reservations may not be shown. Obtain permission before entering private lands.

Imagery.....SPOT5, 2009 - 2015  
Roads.....Alaska Dept. of Transportation, 2014  
Names.....GNIS, 2016  
Hydrography.....National Hydrography Dataset, 2010  
Contours.....National Elevation Dataset, 2015  
Boundaries.....Multiple sources; see metadata file, 1950 - 2016  
Public Land Survey System.....BLM, 2006 - 2008  
Wetlands.....FWS National Wetlands Inventory 1977 - 2014



ROAD CLASSIFICATION

Expressway	Local Connector
Secondary Hwy	Local Road
Ramp	4WD
Interstate Route	US Route
	State Route

ADJOINING QUADRANGLES

1	2	3
4	5	6
7	8	9

1 Bettles (D-6) SW  
2 Bettles (D-6) SE  
3 Bettles (D-5) SW  
4 Bettles (C-6) NW  
5 Bettles (C-5) NW  
6 Bettles (C-6) SW  
7 Bettles (C-6) SE  
8 Bettles (C-5) SE  
9 Bettles (C-5) SW

BETTLES C-6 NE, AK  
2016

