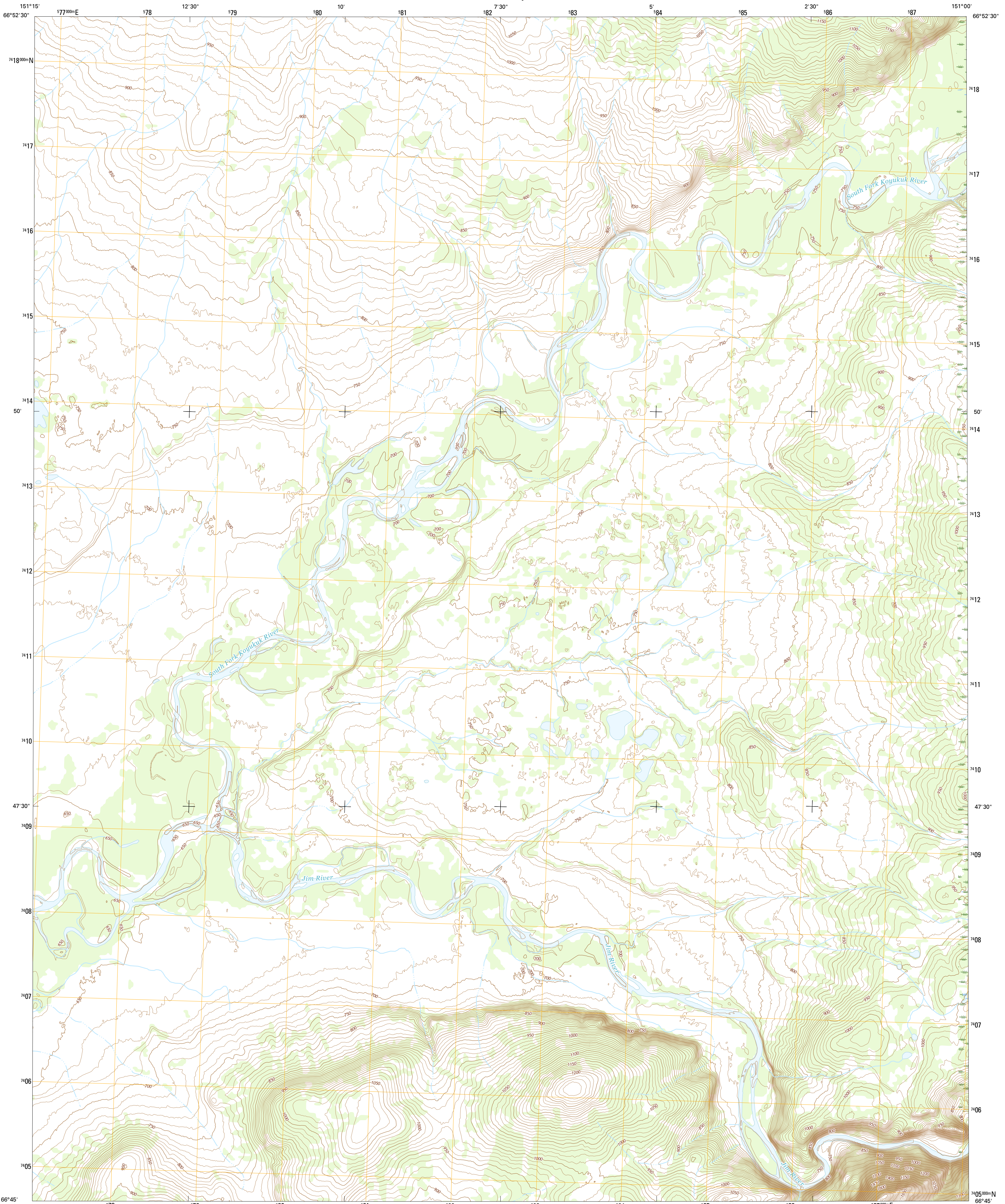




U.S. DEPARTMENT OF THE INTERIOR  
U.S. GEOLOGICAL SURVEY



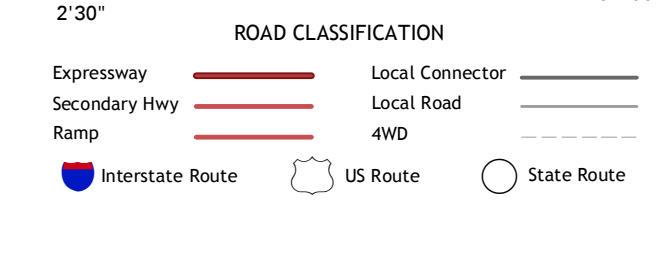
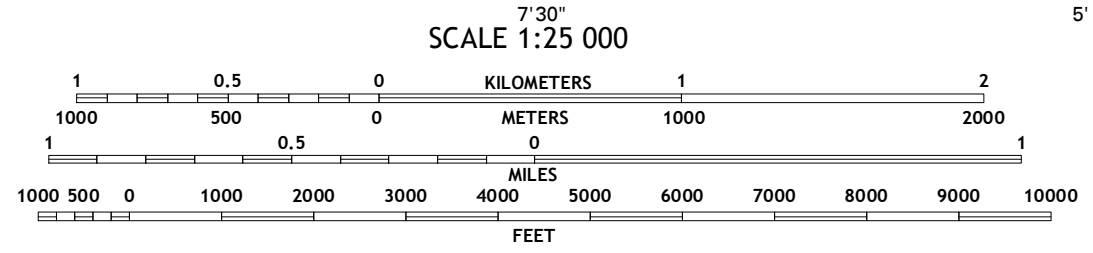
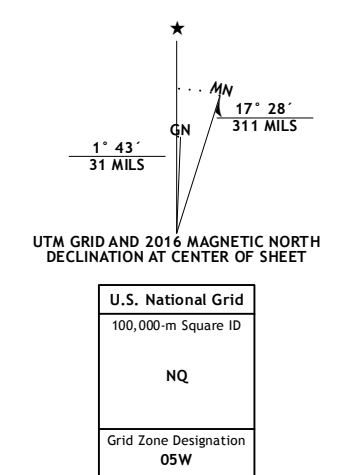
BETTLES D-3 SE QUADRANGLE  
ALASKA  
7.5-MINUTE SERIES



**Produced by the United States Geological Survey**  
North American Datum of 1983 (NAD83)  
World Geodetic System of 1984 (WGS84). Projection and  
1 000-meter grid: Universal Transverse Mercator, Zone 09W  
10 000-foot ticks: Alaska Coordinate System of 1983 (zone 4)

This map is not a legal document. Boundaries may be  
generalized for this map scale. Private lands within government  
reservations may not be shown. Obtain permission before  
entering private lands.

Imagery.....SPOT, 2009 - 2015  
Roads.....Alaska Dept. of Transportation, 2014  
Name.....GNIS, 2016  
Hydrography.....National Hydrography Dataset, 2010  
Contours.....National Elevation Dataset, 2015  
Boundaries.....Multiple sources; see metadata file, 1950-2016  
Public Land Survey System.....BLM, 2006 - 2008  
Wetlands.....FWS National Wetlands Inventory 1977 - 2014



1	2	3	1 Bettles (D-3) NW
			2 Bettles (D-3) NE
			3 Bettles (D-2) NW
4	5		4 Bettles (D-2) SW
			5 Bettles (D-2) NW
			6 Bettles (C-3) NW
6	7	8	7 Bettles (C-3) NE
			8 Bettles (C-2) NW

ADJOINING QUADRANGLES

BETTLES D-3 SE, AK  
2016

