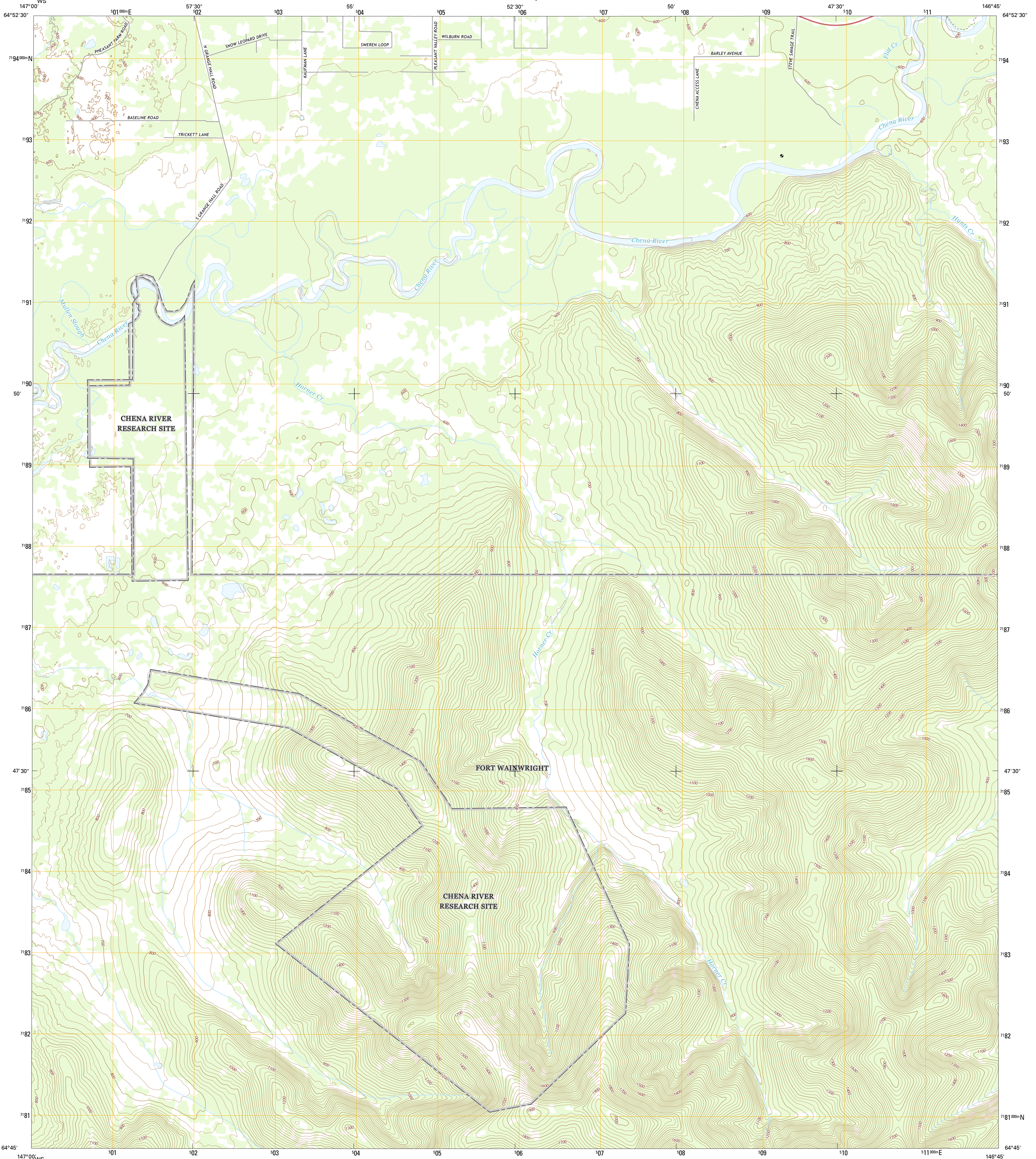




U.S. DEPARTMENT OF THE INTERIOR
U.S. GEOLOGICAL SURVEY



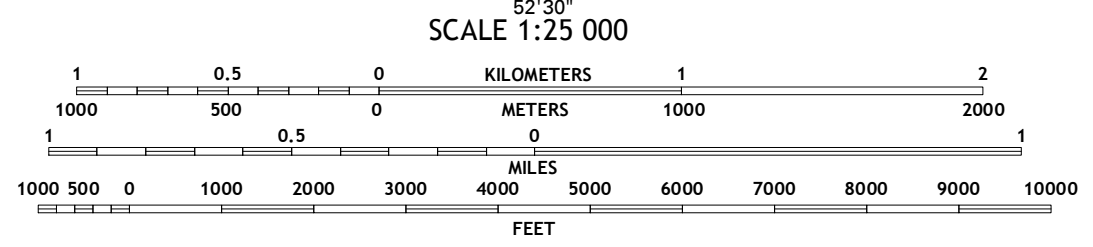
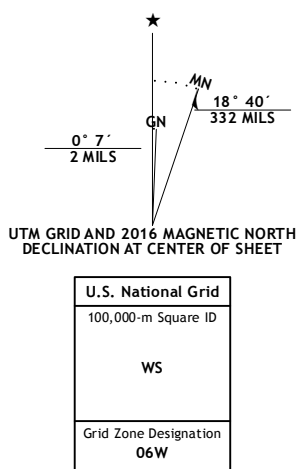
BIG DELTA D-6 SW QUADRANGLE
ALASKA-FAIRBANKS NORTH STAR BOROUGH
7.5-MINUTE SERIES



Produced by the United States Geological Survey
North American Datum of 1983 (NAD83)
World Geodetic System of 1984 (WGS84), Projection and
1 000-meter grid; Universal Transverse Mercator, Zone 50W
10 000-foot ticks; Alaska Coordinate System of 1983 (zone 3)

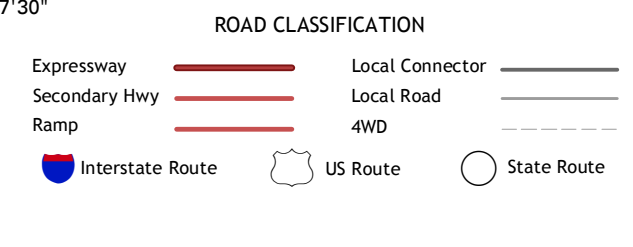
This map is not a legal document. Boundaries may be
generalized for this map scale. Private lands within government
reservations may not be shown. Obtain permission before
entering private lands.

Imagery.....SPOT5, 2009 - 2015
Roads.....Alaska Dept. of Transportation, 2014
Names.....GNIS, 2016
Hydrography.....National Hydrography Dataset, 2009
Contours.....National Elevation Dataset, 2012
Boundaries.....Multiple sources; see metadata file, 1950 - 2016
Public Land Survey System.....BLM, 2006 - 2008
Wetlands.....FWS National Wetlands Inventory 1977 - 2014



CONTOUR INTERVAL 20 FEET
NORTH AMERICAN DATUM OF 1988

This map was produced to conform with the
National Geospatial Program US Topo Product Standard, 2011.
A metadata file associated with this product is draft version 0.6.18



| | | |
|---|---|---|
| 1 | 2 | 3 |
| 4 | 5 | 6 |
| 7 | 8 | 9 |

1 Fairbanks (D-1) NE
2 Big Delta (D-6) NW
3 Big Delta (D-6) NE
4 Fairbanks (D-1) SE
5 Big Delta (D-6) SE
6 Fairbanks (C-1) NE
7 Big Delta (C-6) NW
8 Big Delta (C-6) NE

BIG DELTA D-6 SW, AK
2016

