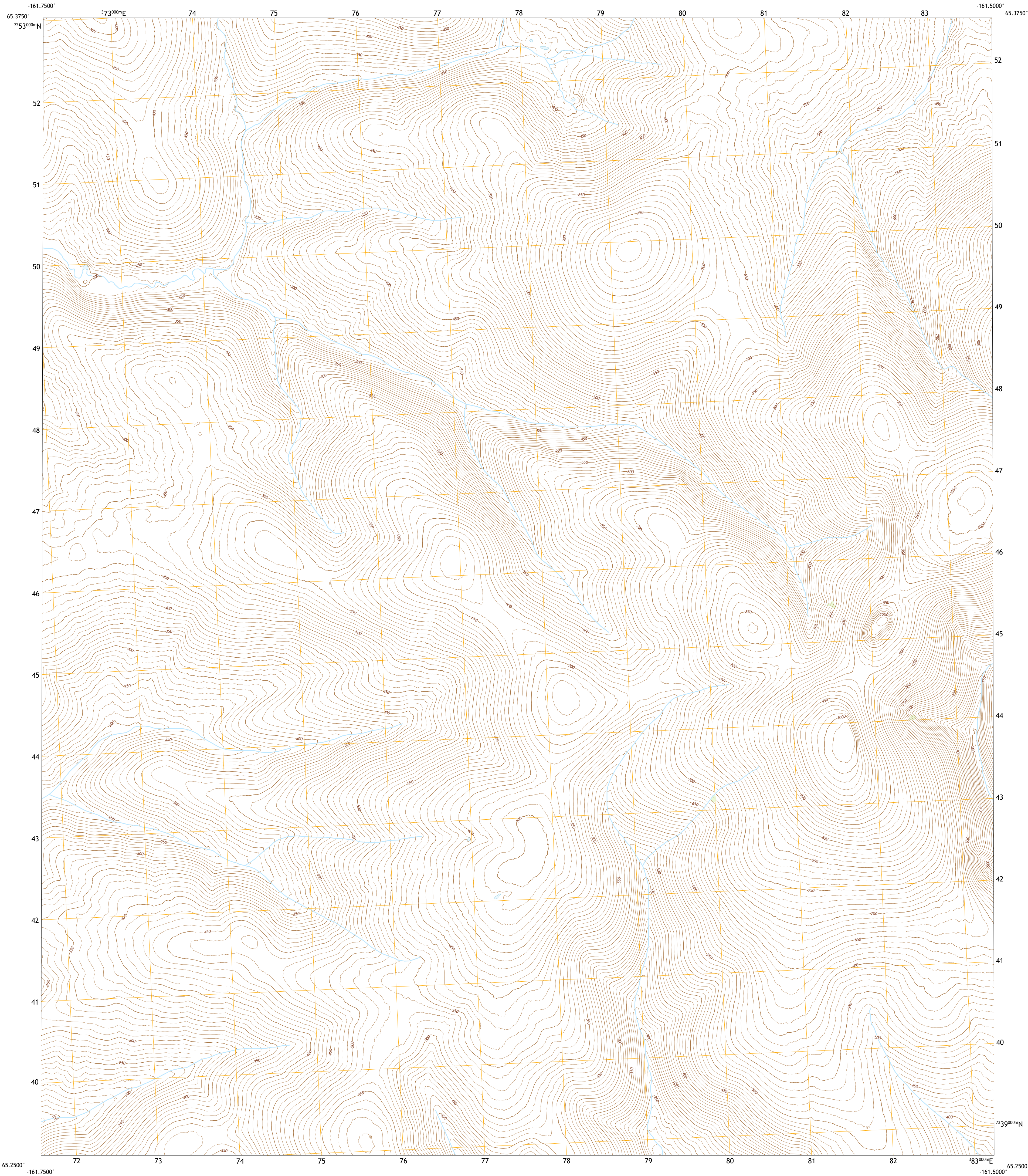




U.S. DEPARTMENT OF THE INTERIOR
U.S. GEOLOGICAL SURVEY

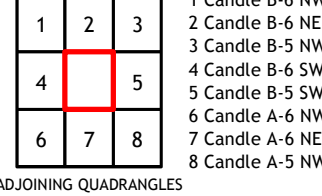
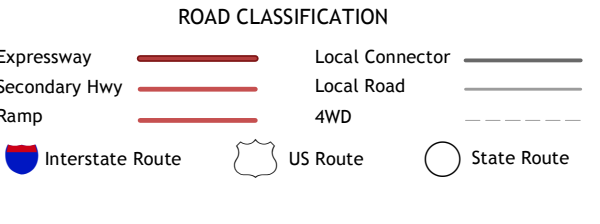
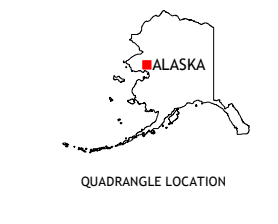
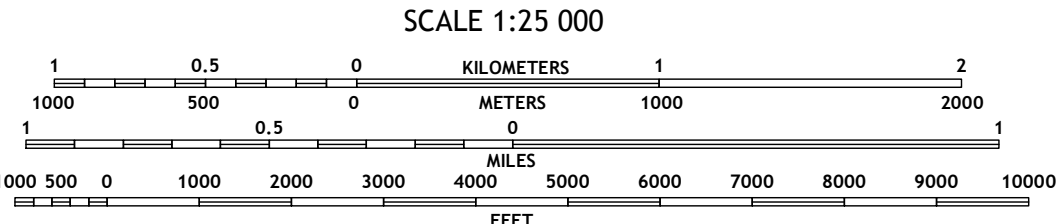
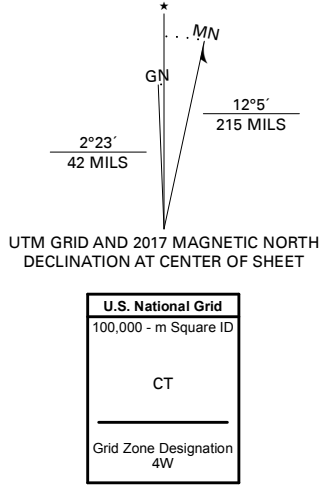


CANDLE B-6 SE QUADRANGLE
ALASKA - NOME CENSUS AREA
7.5-MINUTE SERIES



Produced by the United States Geological Survey

North American Datum of 1983 (NAD83)
World Geodetic System of 1984 (WGS84) Projection and
1 000-meter grid/Universal Transverse Mercator, Zone 4W
This map is not a legal document. Boundaries may be
generalized for this map scale. Private lands within government
reservations may not be shown. Obtain permission before
entering private lands.
Imagery.....SPOT, © September 2009
Roads.....Alaska Dept. of Transportation, Not Available
Names.....GNIS, Not Available
Hydrography.....National Hydrography Dataset, 2001 - 2016
Contours.....National Elevation Dataset, 2013
Boundaries.....Multiple sources: see metadata file 2014 - 2016
Public Land Survey System.....BLM, 2008 - 2017
Wetlands.....FWS National Wetlands Inventory Not Available



CANDLE B-6 SE, AK
2017

