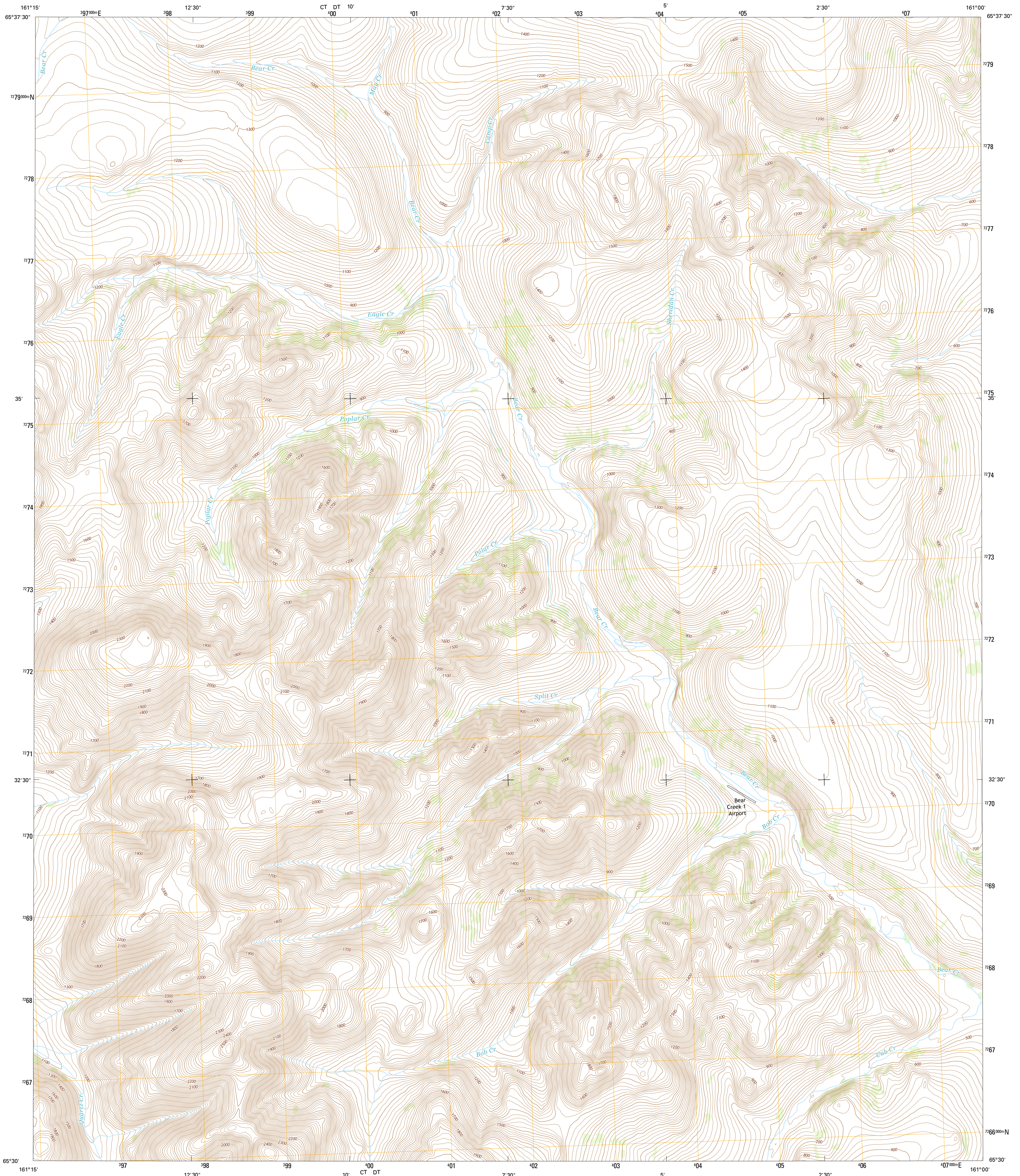




U.S. DEPARTMENT OF THE INTERIOR
U.S. GEOLOGICAL SURVEY



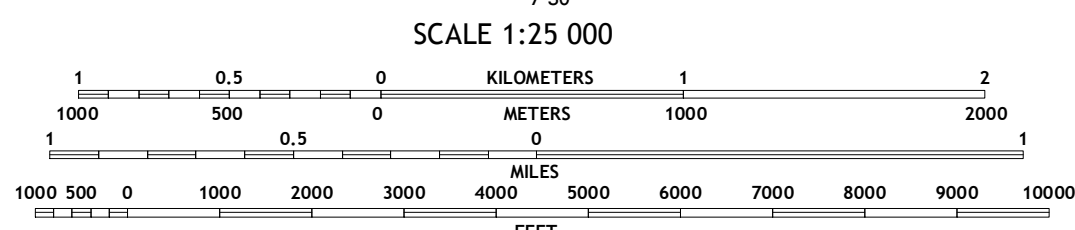
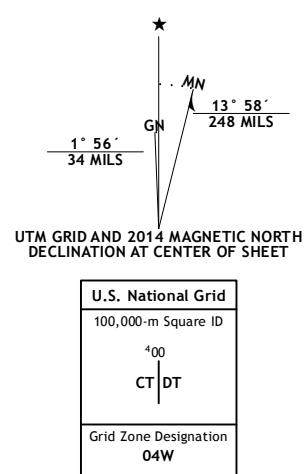
CANDLE C-5 SE QUADRANGLE
ALASKA-NORTHWEST ARCTIC BOROUGH
7.5-MINUTE SERIES



Produced by the United States Geological Survey
North American Datum of 1983 (NAD83)
World Geodetic System of 1984 (WGS84), Projection and
1 000-meter grid: Universal Transverse Mercator, Zone 04W

This map is not a legal document. Boundaries may be generalized
for this map scale. Private lands within government reservations
may not be shown. Obtain permission before entering private lands

Imagery.....SPOT, ©2010
Roads.....Alaska Dept. of Transportation, 2013
Names.....GNIS, 2013
Hydrography.....National Hydrography Dataset, 2010
Contours.....National Elevation Dataset, 2013
Boundaries.....Multiple sources; see metadata file, 1950 - 2012
Public Land Survey System.....BLM, 2006 - 2008



ROAD CLASSIFICATION

Expressway	Local Connector
Secondary Hwy	Local Road
Ramp	4WD
Interstate Route	US Route
	State Route

1	2	3
4	5	
6	7	8

ADJOINING QUADRANGLES

- 1 Candle (C-5) NW
- 2 Candle (C-5) NE
- 3 Candle (C-4) NW
- 4 Candle (C-5) SW
- 5 Candle (C-4) SW
- 6 Candle (B-5) NW
- 7 Candle (B-5) NE
- 8 Candle (B-4) NW

CANDLE C-5 SE, AK
2014



CONTOUR INTERVAL 20 FEET
NORTH AMERICAN VERTICAL DATUM OF 1988
This map was produced to conform with the
National Geospatial Program US Topo Product Standard, 2011.
A metadata file associated with this product is draft version 0.6.17