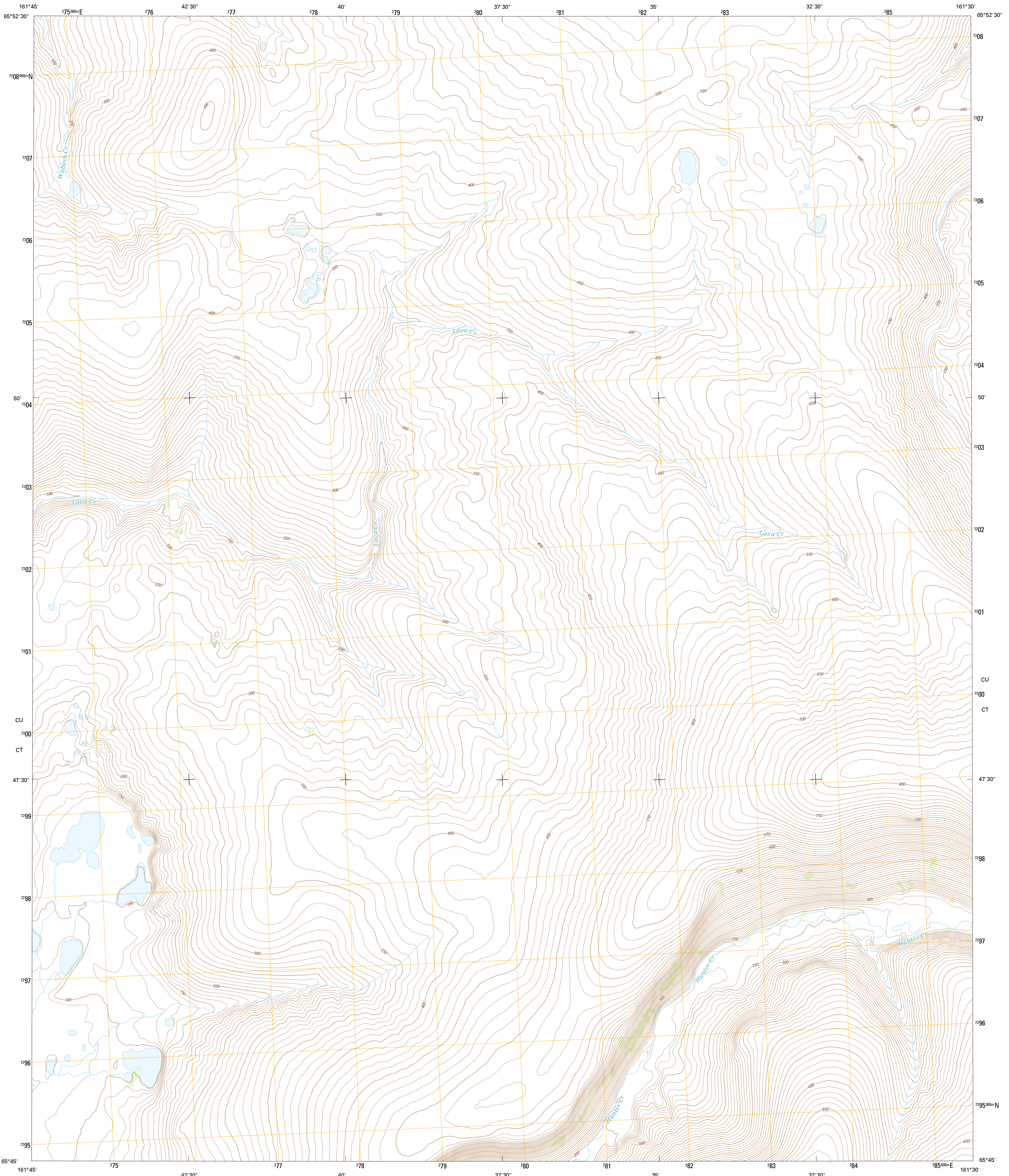




U.S. DEPARTMENT OF THE INTERIOR  
U.S. GEOLOGICAL SURVEY



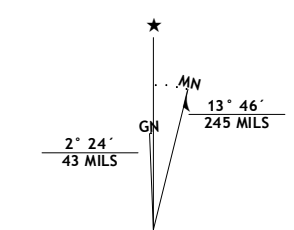
CANDLE D-6 SE QUADRANGLE  
ALASKA-NORTHWEST ARCTIC BOROUGH  
7.5-MINUTE SERIES



Produced by the United States Geological Survey  
North American Datum of 1983 (NAD83)  
World Geodetic System of 1984 (WGS84). Projection and  
1 000-meter grid: Universal Transverse Mercator, Zone 04W

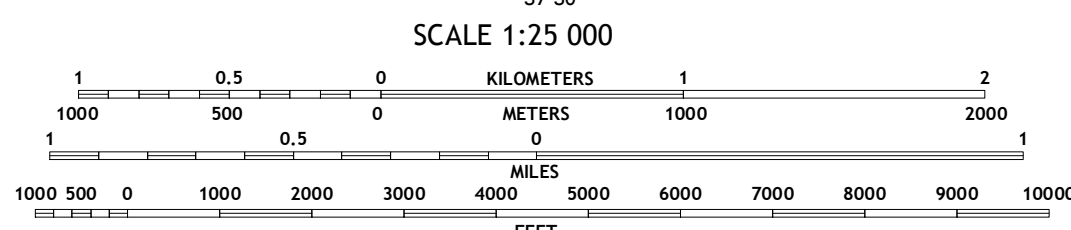
This map is not a legal document. Boundaries may be generalized  
for this map scale. Private lands within government reservations  
may not be shown. Obtain permission before entering private lands

Imagery.....SPOT, ©2010  
Roads.....Alaska Dept. of Transportation, 2013  
Names.....GNIS, 2013  
Hydrography.....National Hydrography Dataset, 2010  
Contours.....National Elevation Dataset, 2013  
Boundaries.....Multiple sources; see metadata file, 1950 - 2012  
Public Land Survey System.....BLM, 2006 - 2008



UTM GRID AND 2014 MAGNETIC NORTH  
DECLINATION AT CENTER OF SHEET

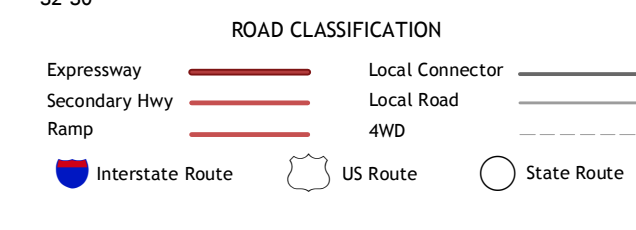
U.S. National Grid	100,000-m Square ID
CU	700
CT	
Grid Zone Designation	04W



CONTOUR INTERVAL 10 FEET  
NORTH AMERICAN VERTICAL DATUM OF 1988  
CONTOURS MAY NOT MEET NATIONAL MAP ACCURACY STANDARDS  
This map was produced to conform with the  
National Geospatial Program US Topo Product Standard, 2011.  
A metadata file associated with this product is draft version 0.6.17



QUADRANGLE LOCATION



1	2	3
4	5	6
6	7	8

ADJOINING QUADRANGLES

- 1 Candle (D-6) NW
- 2 Candle (D-6) NE
- 3 Candle (D-5) NW
- 4 Candle (D-6) SW
- 5 Candle (D-5) SW
- 6 Candle (C-6) NW
- 7 Candle (C-6) NE
- 8 Candle (C-5) NW

CANDLE D-6 SE, AK  
2014

