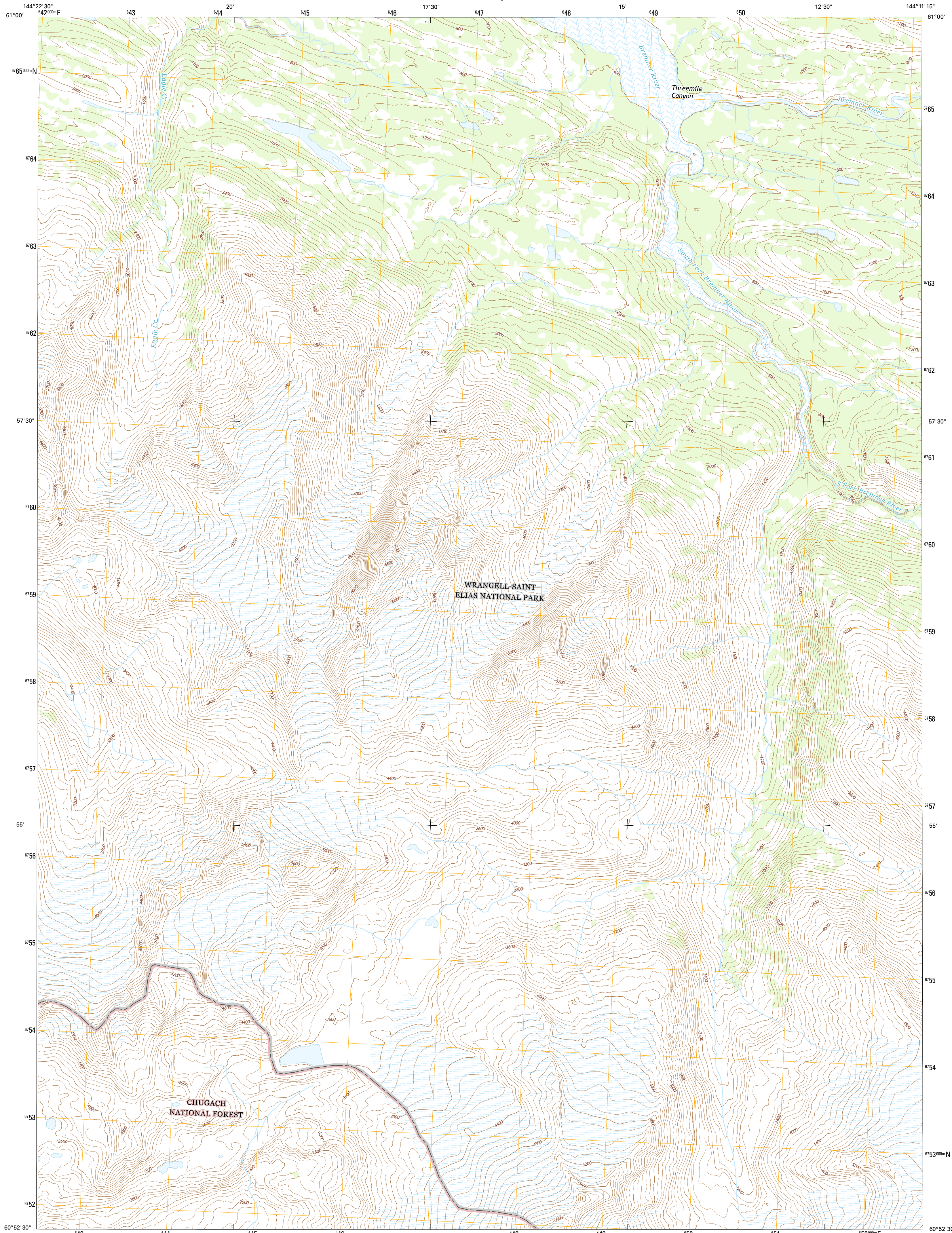




U.S. DEPARTMENT OF THE INTERIOR
U.S. GEOLOGICAL SURVEY



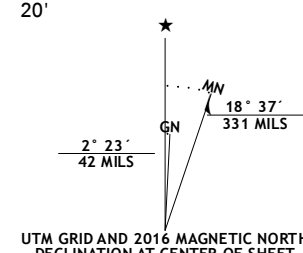
CORDOVA D-1 NW QUADRANGLE
ALASKA
7.5-MINUTE SERIES



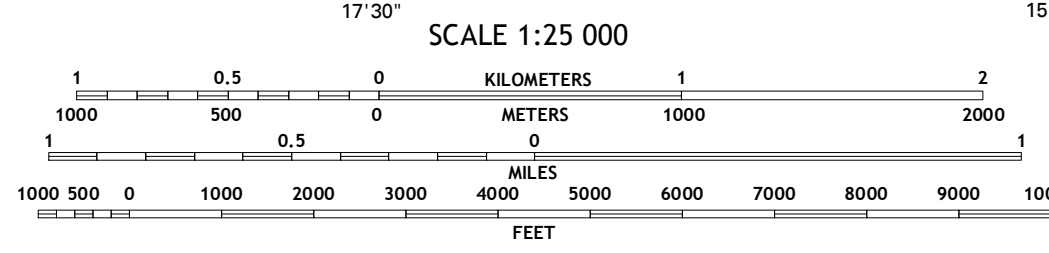
Produced by the United States Geological Survey
North American Datum of 1983 (NAD83)
World Geodetic System of 1984 (WGS84). Projection and
1 000-foot tick: Universal Transverse Mercator, Zone 06V
10 000-foot tick: Alaska Coordinate System of 1983 (zone 3)

This map is not a legal document. Boundaries may be
generalized for this map scale. Private lands within government
reservations may not be shown. Obtain permission before
entering private lands.

Imagery.....SPOT5, 2009 - 2015
Roads.....Alaska Dept. of Transportation, 2014
Roads within US Forest Service Lands.....FS Topo Data
with limited Forest Service updates, 2013 - 2016
Names.....GNIS, 2016
Hydrography.....National Hydrography Dataset, 2011
Contours.....National Elevation Dataset, 2013
Boundaries.....Multiple sources; see metadata file 1950 - 2016
Wetlands.....FWS National Wetlands Inventory 1977 - 2014
Public Land Survey System.....BLM, 2006 - 2008



U.S. National Grid 100,000 m Square ID	XN
Grid Zone Designation	06V



CONTOUR INTERVAL 80 FEET
NORTH AMERICAN VERTICAL DATUM OF 1988
This map was produced to conform with the
National Geospatial Program US Topo Product Standard, 2011.
A metadata file associated with this product is draft version 0.6.18



1	2	3
4	5	6
7	8	

ADJOINING QUADRANGLES
1 Valdez (4-2) SE
2 Valdez (4-1) SW
3 Valdez (4-1) SE
4 Cordova (D-2) NE
5 Cordova (D-1) NE
6 Cordova (D-2) SE
7 Cordova (D-1) SW
8 Cordova (D-1) SE

ROAD CLASSIFICATION	
Expressway	Local Connector
Secondary Hwy	Local Road
Ramp	4WD
Interstate Route	US Route
FS Primary Route	FS Passenger Route
	FS High Clearance Route

Check with local Forest Service unit
for current travel conditions and restrictions.

CORDOVA D-1 NW, AK
2016

