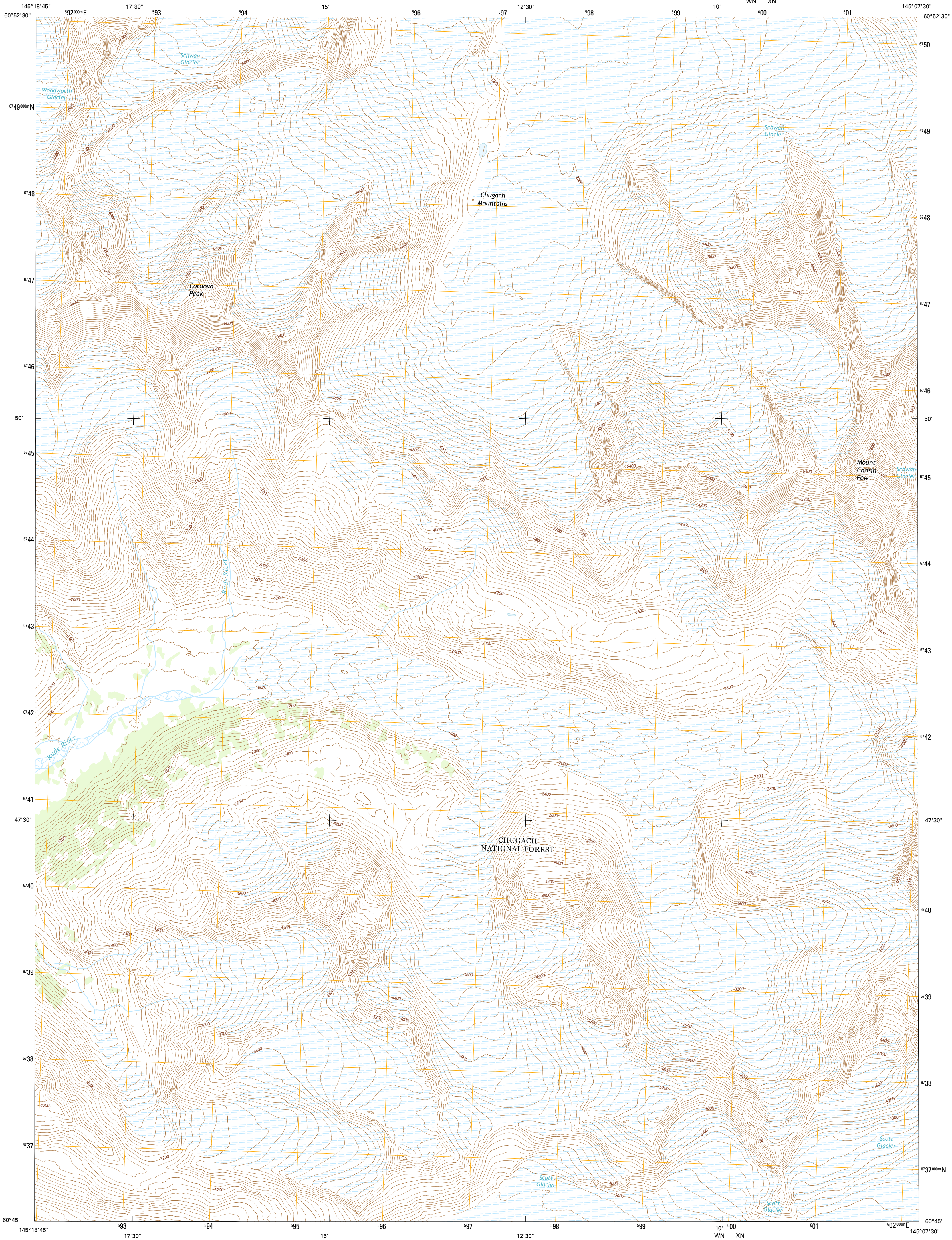




U.S. DEPARTMENT OF THE INTERIOR
U.S. GEOLOGICAL SURVEY



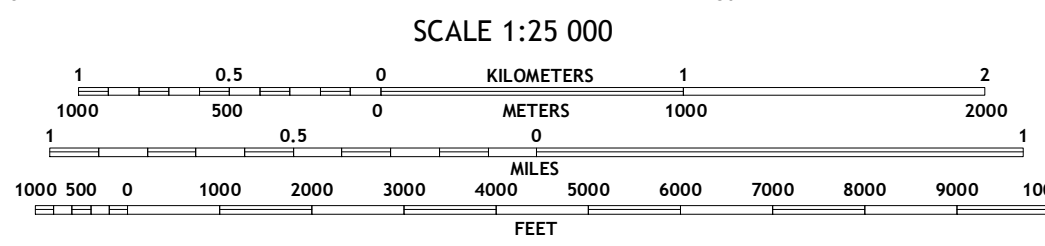
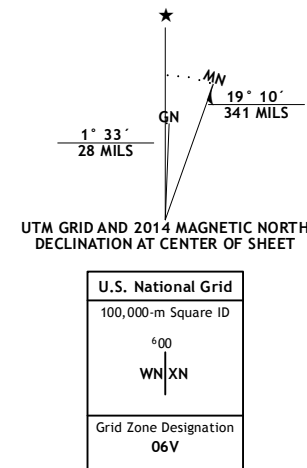
CORDOVA D-4 SE QUADRANGLE
ALASKA
7.5-MINUTE SERIES



Produced by the United States Geological Survey
North American Datum of 1983 (NAD83)
World Geodetic System of 1984 (WGS84). Projection and
1 000-meter grid: Universal Transverse Mercator, Zone 06V

This map is not a legal document. Boundaries may be generalized for this map scale. Private lands within government reservations may not be shown. Obtain permission before entering private lands

Imagery.....SPOT, ©2011
Roads.....Alaska Dept. of Transportation, 2013
Roads within US Forest Service Lands.....FS Topo Data with limited Forest Service updates, 2013
Names.....GNIS, 2013
Hydrography.....National Hydrography Dataset, 2011
Contours.....National Elevation Dataset, 2013
Boundaries.....Multiple sources; see metadata file, 1950 - 2013
Public Land Survey System.....BLM, 2006 - 2008

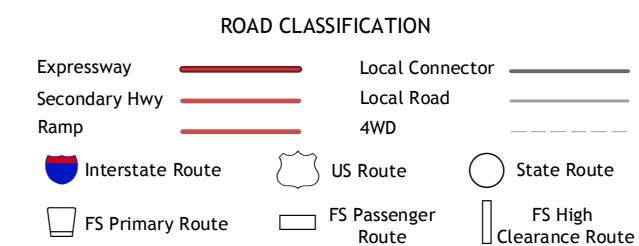


QUADRANGLE LOCATION

1	2	3
4	5	6
7	8	9

ADJOINING QUADRANGLES

- 1 Cordova (D-4) NW
- 2 Cordova (D-4) NE
- 3 Cordova (D-3) NW
- 4 Cordova (D-4) SW
- 5 Cordova (D-3) SW
- 6 Cordova (C-4) NW
- 7 Cordova (C-4) NE
- 8 Cordova (C-3) NW



Check with local Forest Service unit for current travel conditions and restrictions.

CORDOVA D-4 SE, AK
2014

