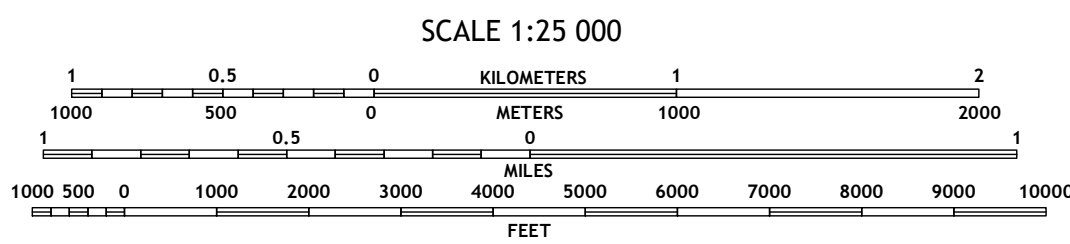
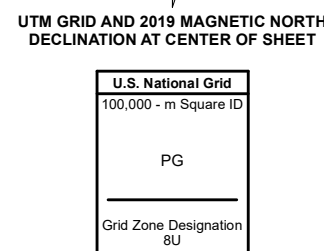
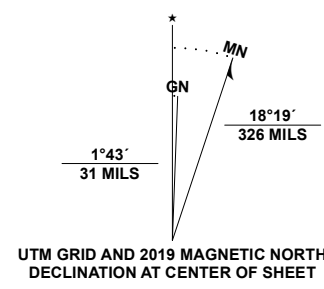




Produced by the United States Geological Survey
North American Datum of 1983 (NAD83)
World Geodetic System of 1984 (WGS84) Projection and 1 000-meter grid: Universal Transverse Mercator, Zone 8U

This map is not a legal document. Boundaries may be generalized for this map scale. Private lands within government reservations may not be shown. Obtain permission before entering private lands.

Imagery: SPOT, © April 2019 - June 2020
Roads: Alaska Dept. of Transportation, Not Available
Data within US Forest Service Lands: FSTopo Data with limited Forest Service updates, 2015
Names: GHS, 1981 - 2011
Hydrography: National Hydrography Dataset, 2002 - 2018
Contours: National Elevation Dataset, 2019
Boundaries: Multiple sources; see metadata file 2017 - 2021
Public Land Survey System: BLM, 2008
Wetlands: FWS National Wetlands Inventory 1979 - 1985



CONTOUR INTERVAL 10 FEET
NORTH AMERICAN VERTICAL DATUM OF 1988
This map was produced to conform with the National Geospatial Program US Topo Product Standard.



QUADRANGLE LOCATION

1	2	3
4	5	6
7	8	9

ADJOINING QUADRANGLES

- 1 Craig B-4 SE
- 2 Craig B-3 SW
- 3 Craig B-3 SE
- 4 Craig A-4 NE
- 5 Craig A-3 NE
- 6 Craig A-4 SE
- 7 Craig A-3 SW
- 8 Craig A-3 SE

ROAD CLASSIFICATION

Expressway	Local Connector	State Route
Secondary Hwy	Local Road	Clearance Route
Ramp	4WD	FS High
Interstate Route	US Route	FS Passenger Route
FS Primary Route	FS Passenger Route	FS High

Check with local Forest Service unit for current travel conditions and restrictions.

CRAIG A-3 NW, AK
2021

