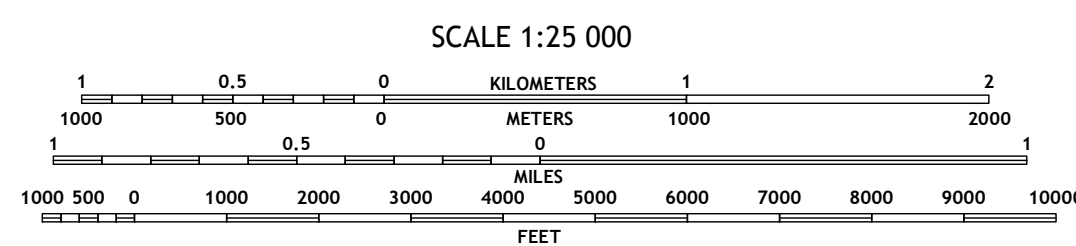
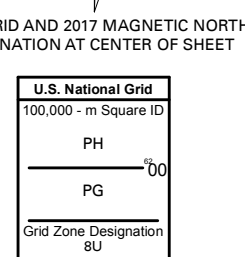
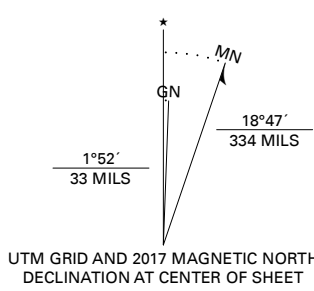


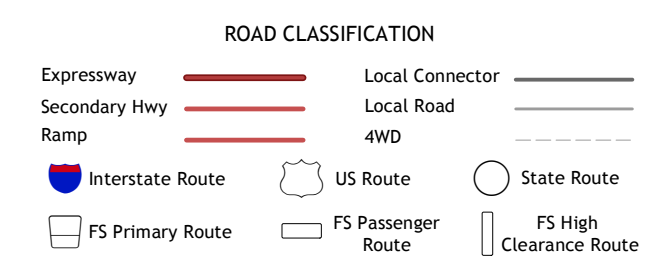
Produced by the United States Geological Survey
North American Datum of 1983 (NAD83)
World Geodetic System of 1984 (WGS84). Projection and
1 000-meter grid: Universal Transverse Mercator, Zone 8U

This map is not a legal document. Boundaries may be
generalized for this map scale. Private lands within government
reservations may not be shown. Obtain permission before
entering private lands.

Imagery.....SPOT, © September 2010
Roads.....Alaska Dept. of Transportation, Not Available
within US Forest Service Lands.....FSTopo Data
with limited Forest Service updates, 2017
Names.....GNIS, 1981 - 2017
Hydrography.....National Hydrography Dataset, 2002 -
2017
Contours.....National Elevation Dataset, 2016
Boundaries.....Multiple sources, see metadata file, 2017
Public Land Survey System.....BLM, 2008 - 2017
Wetlands.....FWS National Wetlands Inventory 1984 - 1985



CONTOUR INTERVAL 40 FEET
NORTH AMERICAN VERTICAL DATUM OF 1988
This map was produced to conform with the
National Geospatial Program US Topo Product Standard, 2011.
A metadata file associated with this product is draft version 0.6.17



Check with local Forest Service unit
for current travel conditions and restrictions.

1	2	3
4	5	6
7	8	9

ADJOINING QUADRANGLES



1 Petersburg A-3 SW
2 Petersburg A-3 SE
3 Petersburg A-2 SW
4 Craig D-3 NW
5 Craig D-3 NE
6 Craig D-3 SE
7 Craig D-3 SW
8 Craig D-2 SW

CRAIG D-3 NE, AK
2017

