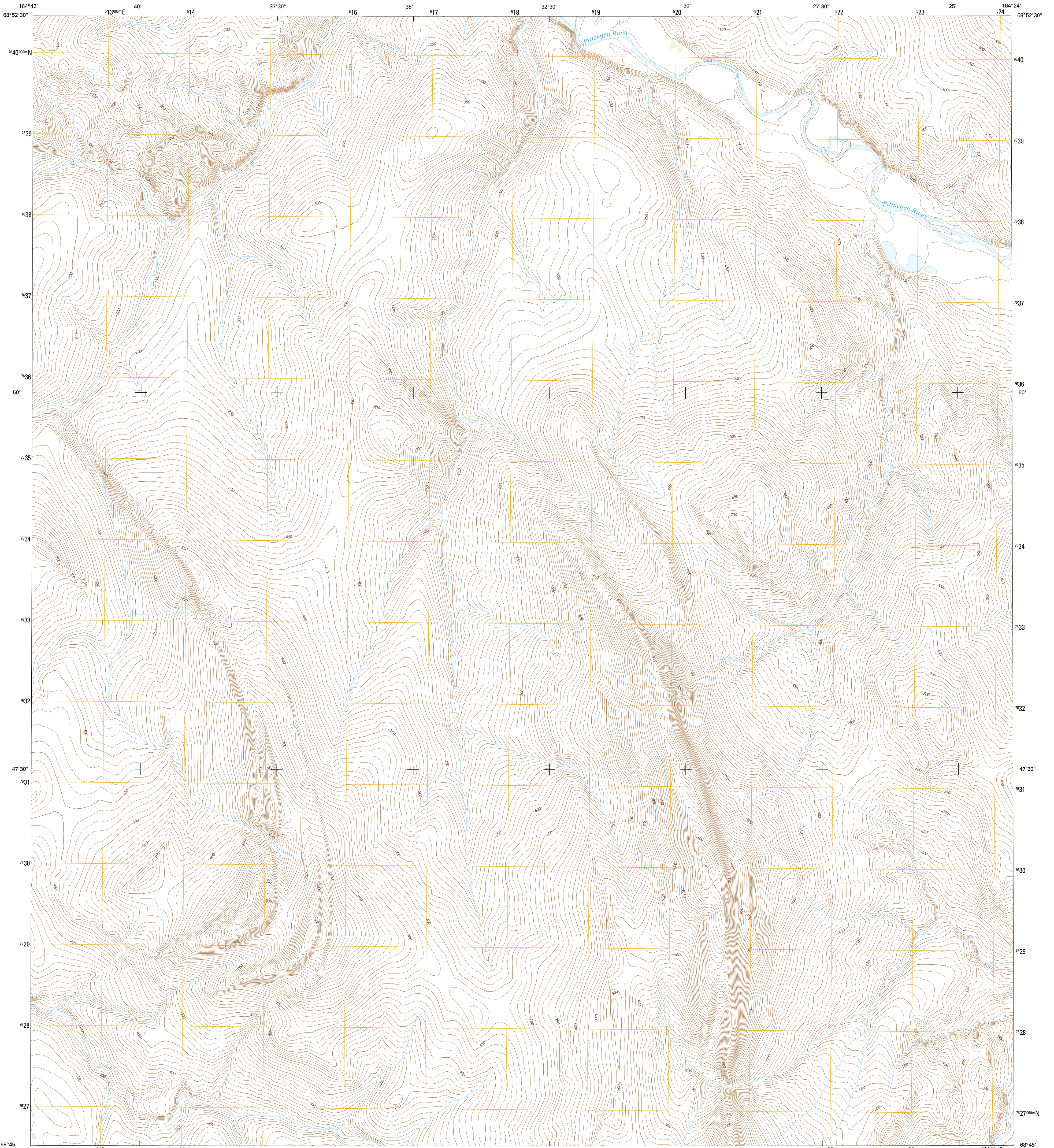




U.S. DEPARTMENT OF THE INTERIOR
U.S. GEOLOGICAL SURVEY



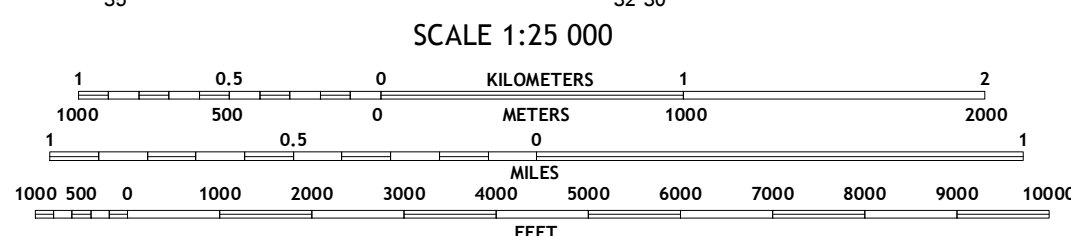
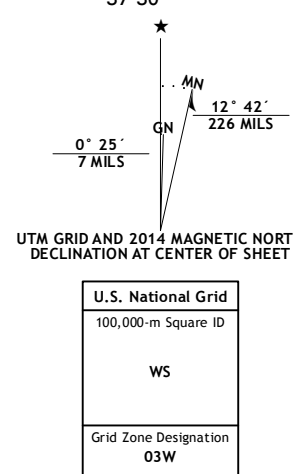
DE LONG MOUNTAINS D-5 SE QUADRANGLE
ALASKA-NORTH SLOPE BOROUGH
7.5-MINUTE SERIES



Produced by the United States Geological Survey
North American Datum of 1983 (NAD83)
World Geodetic System of 1984 (WGS84). Projection and
1 000-meter grid: Universal Transverse Mercator, Zone 03W

This map is not a legal document. Boundaries may be generalized for this map scale. Private lands within government reservations may not be shown. Obtain permission before entering private lands

Imagery.....SPOT, ©2010
Names.....Alaska Dept. of Transportation, 2013
Roads.....GNIS, 2013
Hydrography.....National Hydrography Dataset, 2010
Contours.....National Elevation Dataset, 2013
Boundaries.....Multiple sources; see metadata file, 1950 - 2012
Public Land Survey System.....BLM, 2006 - 2008



CONTOUR INTERVAL 10 FEET
NORTH AMERICAN VERTICAL DATUM OF 1988
CONTOURS MAY NOT MEET NATIONAL MAP ACCURACY STANDARDS
This map was produced to conform with the
National Geospatial Program US Topo Product Standard, 2011.
A metadata file associated with this product is draft version 0.6.17

ROAD CLASSIFICATION

- Expressway (thick red line)
- Secondary Hwy (red line)
- Ramp (red line with blue triangle)
- Local Connector (thin red line)
- Local Road (thin red line)
- 4WD (dashed red line)
- US Route (red line with shield)
- State Route (red line with circle)

QUADRANGLE LOCATION

1	2	3
4	5	6
7	8	

1 De Long Mountains (D-5) NW
2 De Long Mountains (D-5) NE
3 De Long Mountains (D-4) NW
4 De Long Mountains (D-5) SW
5 De Long Mountains (D-4) SW
6 De Long Mountains (C-5) NW
7 De Long Mountains (C-5) NE
8 De Long Mountains (C-4) NW

DE LONG MOUNTAINS D-5 SE, AK
2014

