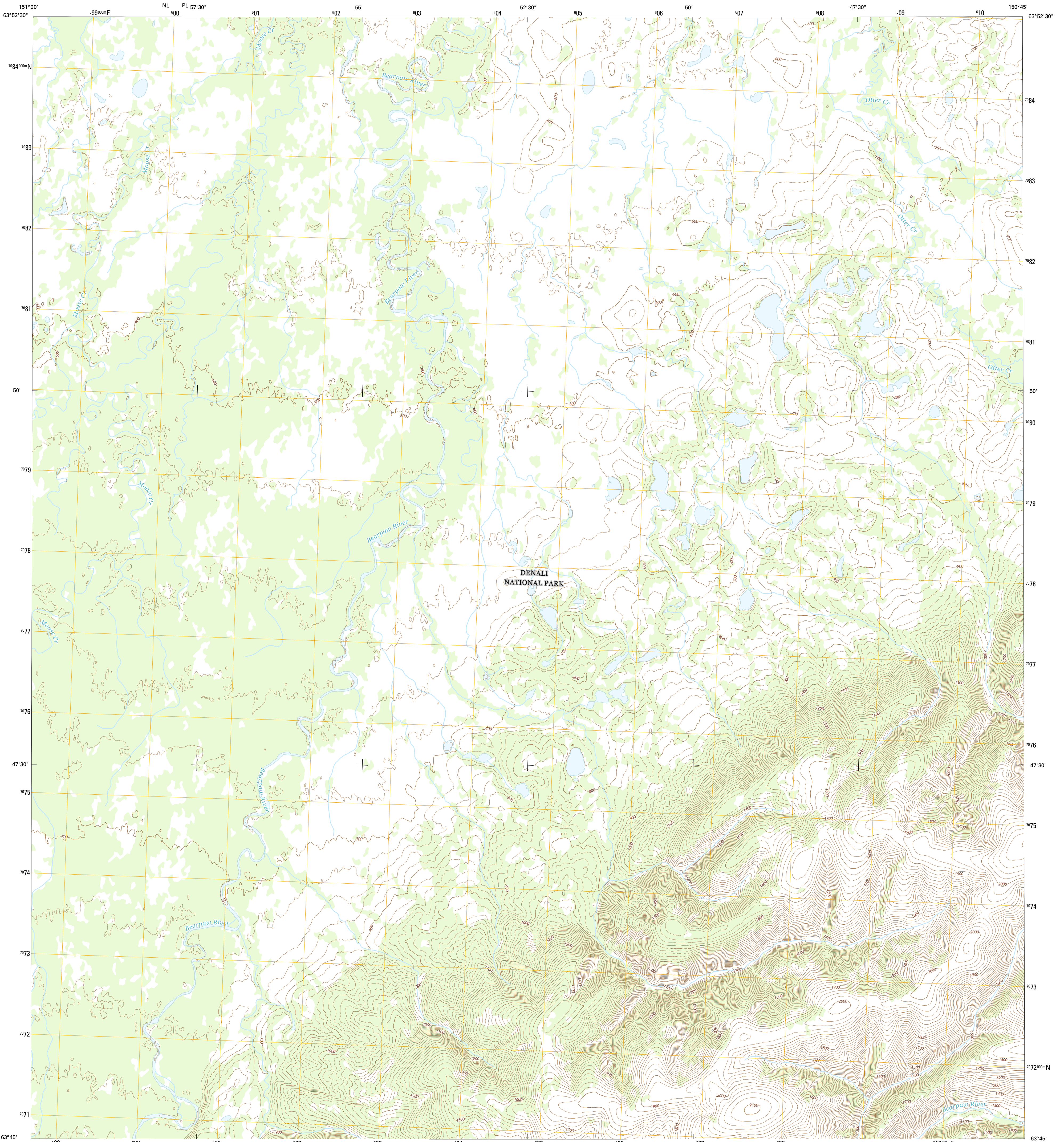




U.S. DEPARTMENT OF THE INTERIOR
U.S. GEOLOGICAL SURVEY



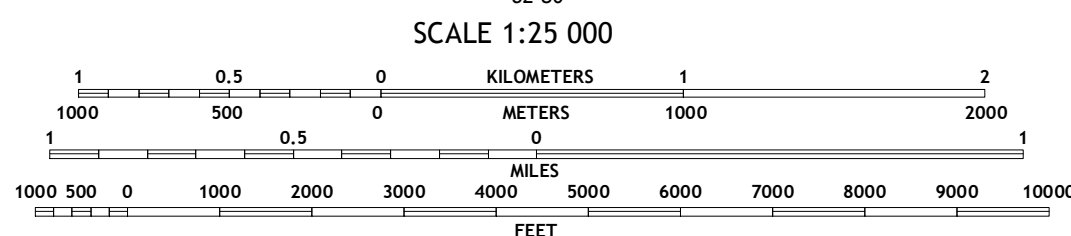
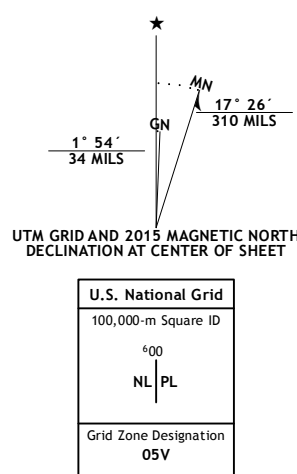
DENALI D-2 SW QUADRANGLE
ALASKA-DENALI BOROUGH
7.5-MINUTE SERIES



Produced by the United States Geological Survey
North American Datum of 1983 (NAD83)
World Geodetic System of 1984 (WGS84). Projection and
1 000-meter grid: Universal Transverse Mercator, Zone 05V

This map is not a legal document. Boundaries may be generalized
for this map scale. Private lands within government reservations
may not be shown. Obtain permission before entering private lands

Imagery.....SPOT, ©2009
Roads.....Alaska Dept. of Transportation, 2013
Names.....GNIS, 2015
Hydrography.....National Hydrography Dataset, 2009
Contours.....National Elevation Dataset, 2013
Boundaries.....Multiple sources; see metadata file, 1950 - 2015
Public Land Survey System.....BLM, 2006 - 2008

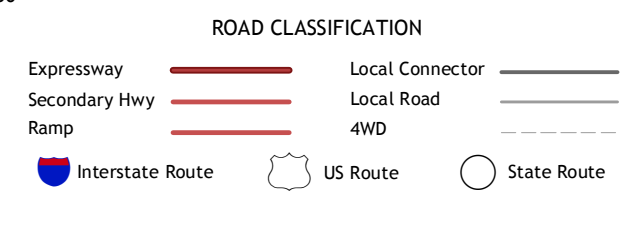


CONTOUR INTERVAL 20 FEET
NORTH AMERICAN VERTICAL DATUM OF 1988

This map was produced to conform with the
National Geospatial Program US Topo Product Standard, 2011.
A metadata file associated with this product is draft version 0.6.17



QUADRANGLE LOCATION



1	2	3
4	5	6
7	8	

ADJOINING QUADRANGLES

- 1 Denali (D-3) NE
- 2 Denali (D-2) NW
- 3 Denali (D-2) NE
- 4 Denali (D-3) SE
- 5 Denali (D-2) SE
- 6 Denali (C-3) NE
- 7 Denali (C-2) NW
- 8 Denali (C-2) NE

DENALI D-2 SW, AK
2015



NSN 7 56 0 1 6 3 4 7 4 2 3
NGA REF NO. USGS X 2 5 K 3 4 6 7 4