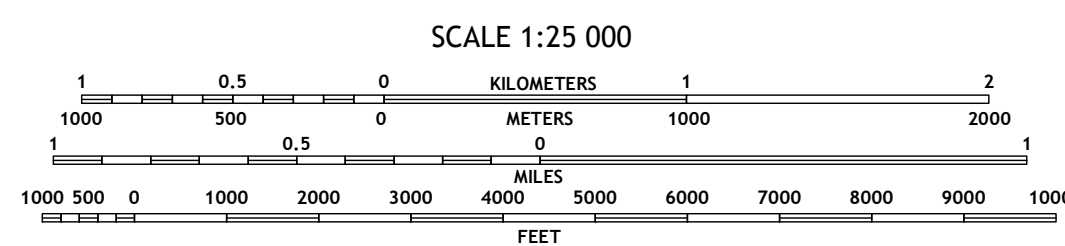
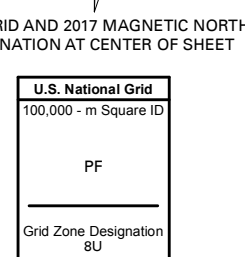
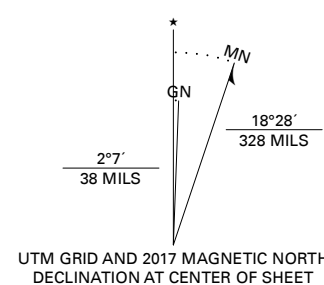


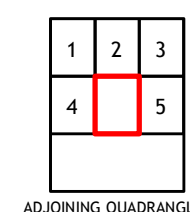
Produced by the United States Geological Survey North American Datum of 1983 (NAD83) World Geodetic System of 1984 (WGS84) Projection and 1 000-meter grid: Universal Transverse Mercator, Zone 8U

This map is not a legal document. Boundaries may be generalized for this map scale. Private lands within government reservations may not be shown. Obtain permission before entering private lands.

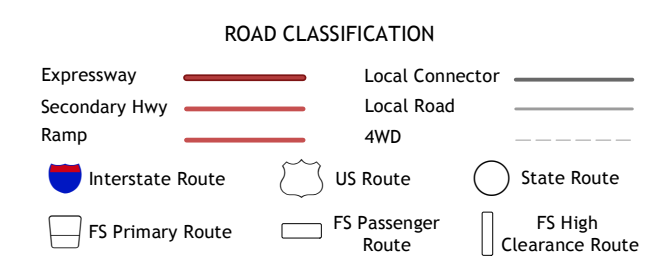
Imagery: SPOT, June 2012  
Roads: Alaska Dept. of Transportation, Not Available  
Roads within US Forest Service Lands: FSTopo Data with limited Forest Service updates, Not Available  
Names: GNS, Not Available  
Hydrography: National Hydrography Dataset, 2006 - 2018  
Contours: National Elevation Dataset, 2016  
Boundaries: Multiple sources; see metadata file, 2015  
Public Land Survey System: BLM, 2008  
Wetlands: FWS National Wetlands Inventory, Not Available



CONTOUR INTERVAL 10 FEET NORTH AMERICAN VERTICAL DATUM OF 1988  
This map was produced to conform with the National Geospatial Program US Topo Product Standard, 2011. A metadata file associated with this product is draft version 0.6.17



1 Dixon Entrance D-2 SW  
2 Dixon Entrance D-2 SE  
3 Dixon Entrance D-1 SW  
4 Dixon Entrance C-3 OE E NW  
5 Dixon Entrance C-1 NW



Check with local Forest Service unit for current travel conditions and restrictions.

DIXON ENTRANCE C-3 OE E NE, AK 2018

