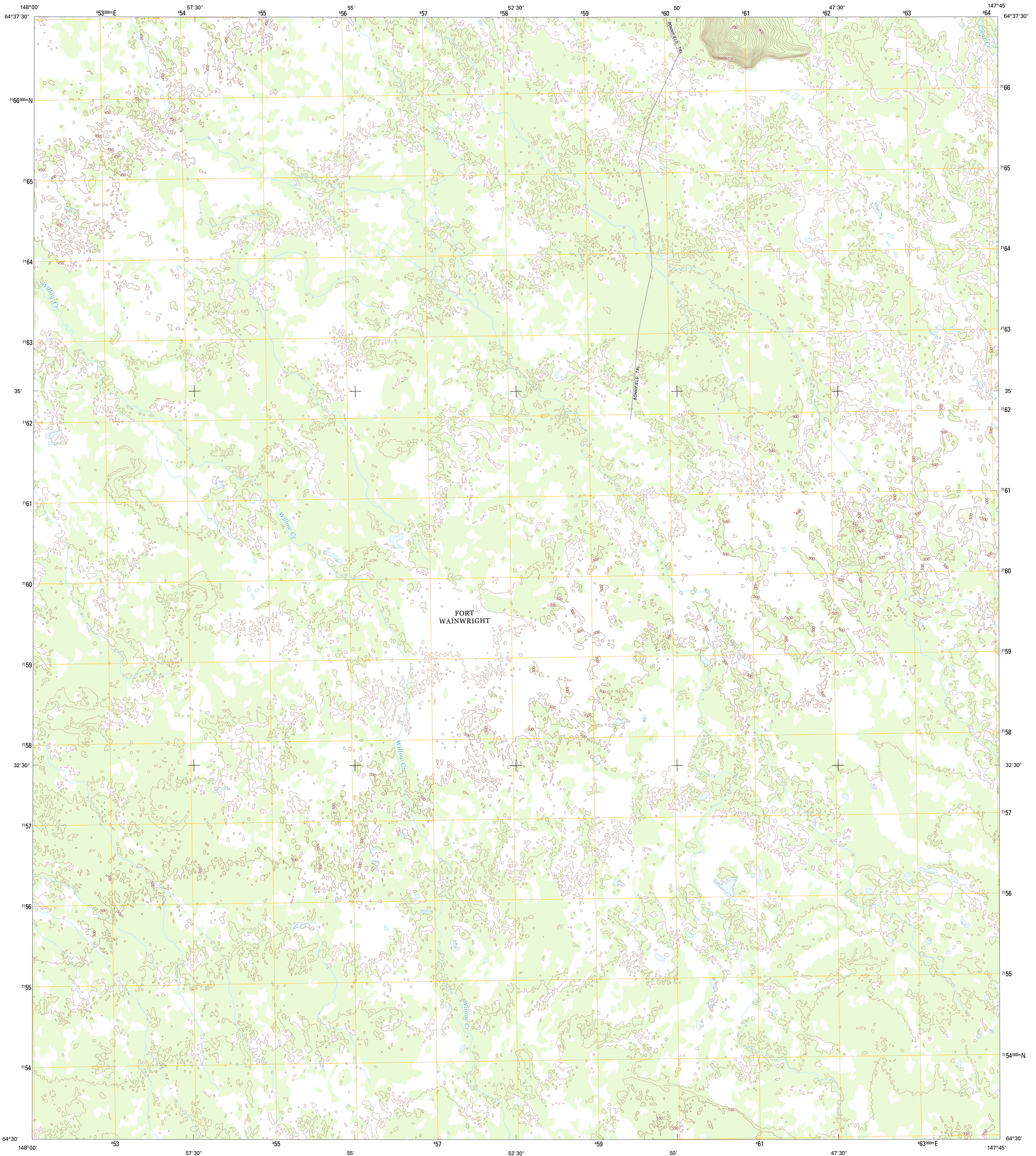




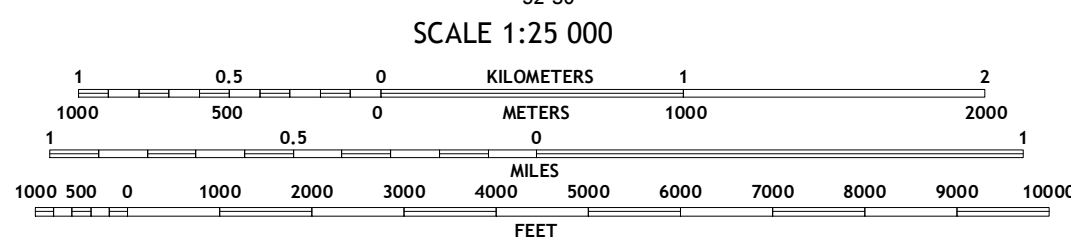
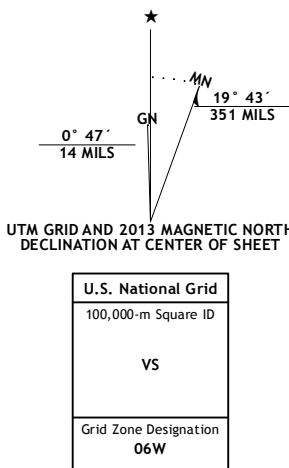
U.S. DEPARTMENT OF THE INTERIOR
U. S. GEOLOGICAL SURVEY



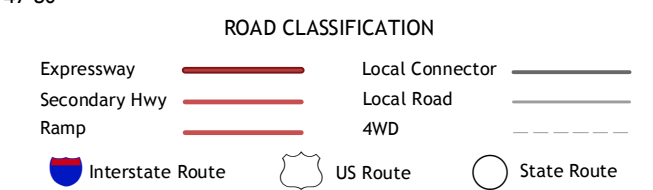
FAIRBANKS C-2 SW QUADRANGLE
ALASKA-FAIRBANKS NORTH STAR BOROUGH
7.5-MINUTE SERIES



Produced by the United States Geological Survey
North American Datum of 1983 (NAD83)
World Geodetic System of 1984 (WGS84). Projection and
1 000-meter grid: Universal Transverse Mercator, Zone 06W



QUADRANGLE LOCATION



Imagery.....SPOT, ©2009
Roads.....©2006-2013 TomTom
Names.....GNIS, 2013
Hydrography.....National Hydrography Dataset, 2009
Contours.....National Elevation Dataset, 2012
Boundaries.....Census, IBWC, IBC, USGS, 1972 - 2012
Public Land Survey System.....BLM, 2006 - 2008

CONTOUR INTERVAL 10 FEET
NORTH AMERICAN VERTICAL DATUM OF 1988
CONTOURS MAY NOT MEET NATIONAL MAP ACCURACY STANDARDS

This map was produced to conform with the
National Geospatial Program US Topo Product Standard, 2011.
A metadata file associated with this product is draft version 0.6.10

1	2	3
4	5	6
7	8	

ADJOINING QUADRANGLES

- 1 Fairbanks (C-3) NE
- 2 Fairbanks (C-2) NW
- 3 Fairbanks (C-2) NE
- 4 Fairbanks (C-3) SE
- 5 Fairbanks (C-2) SE
- 6 Fairbanks (B-3) NE
- 7 Fairbanks (B-2) NW
- 8 Fairbanks (B-2) NE

FAIRBANKS C-2 SW, AK
2013

