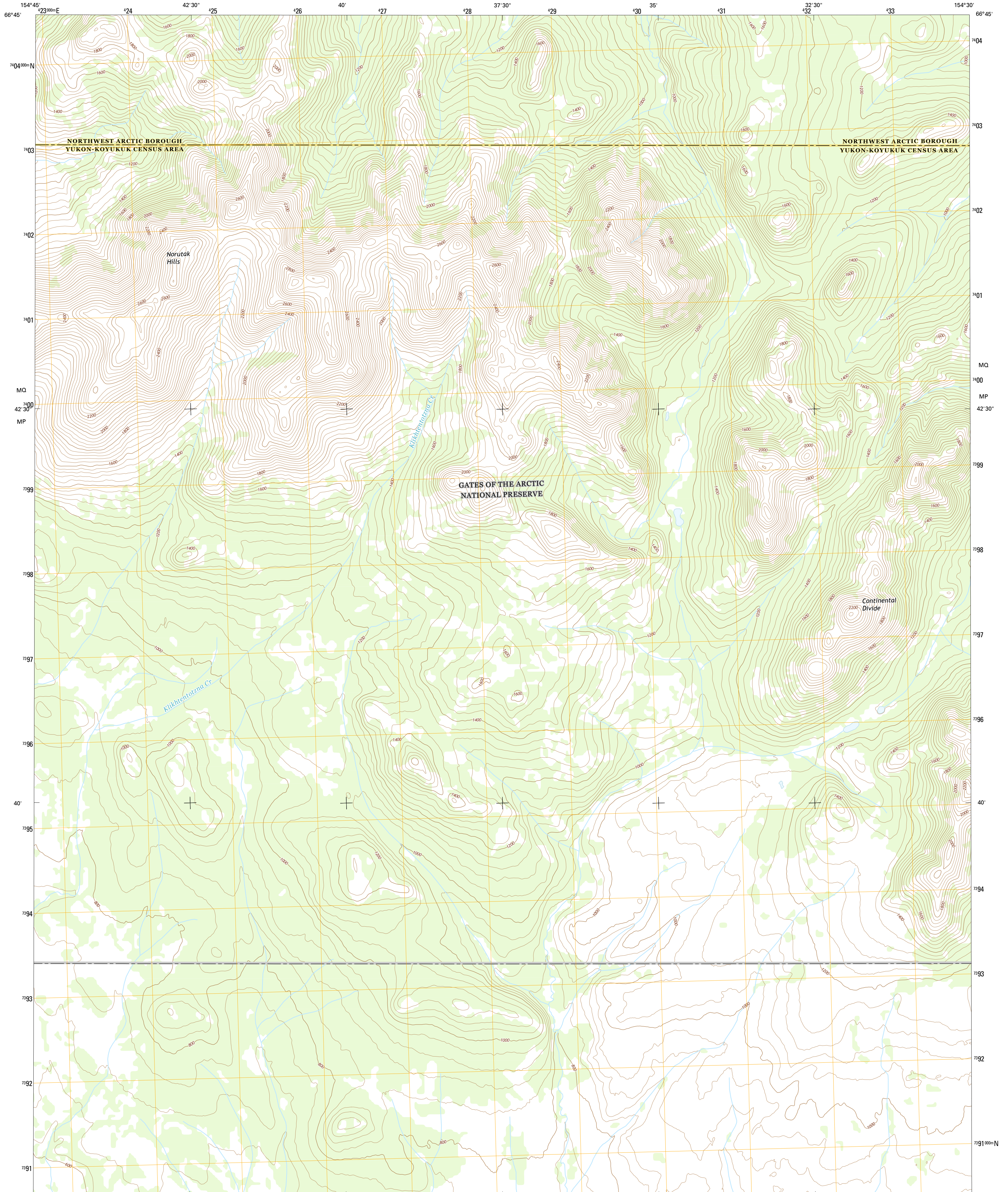




U.S. DEPARTMENT OF THE INTERIOR  
U.S. GEOLOGICAL SURVEY



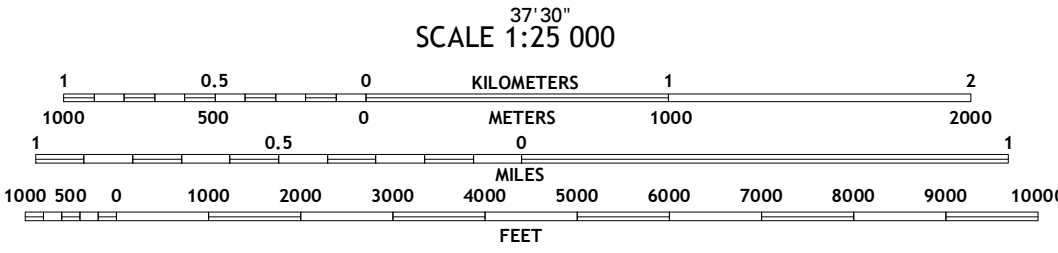
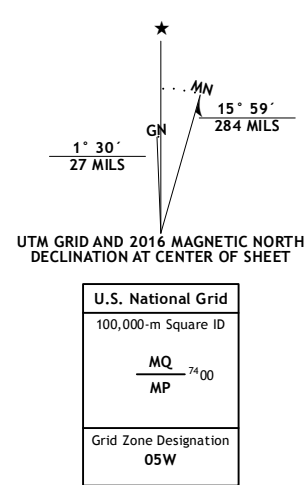
HUGHES C-4 NE QUADRANGLE  
ALASKA  
7.5-MINUTE SERIES



Produced by the United States Geological Survey  
North American Datum of 1983 (NAD83)  
World Geodetic System of 1984 (WGS84), Projection and  
1 000-meter grid: Universal Transverse Mercator, Zone 50W  
10 000-foot ticks: Alaska Coordinate System of 1983 (zones 4  
and 6)

This map is not a legal document. Boundaries may be  
generalized for this map scale. Private lands within government  
reservations may not be shown. Obtain permission before  
entering private lands.

Imagery.....SPOT, 2009 - 2015  
Roads.....Alaska Dept. of Transportation, 2014  
Names.....GNIS, 2016  
Hydrography.....National Hydrography Dataset, 2010  
Contours.....National Elevation Dataset, 2015  
Boundaries.....Multiple sources; see metadata file, 1950 - 2016  
Public Land Survey System.....BLM, 2006 - 2008  
Wetlands.....FWS National Wetlands Inventory 1977 - 2014



QUADRANGLE LOCATION

ROAD CLASSIFICATION

Expressway	Local Connector
Secondary Hwy	Local Road
Ramp	4WD
Interstate Route	US Route
	State Route

1	2	3
4	5	6
7	8	9

ADJOINING QUADRANGLES

1 Hughes (D-4) SW  
2 Hughes (D-4) SE  
3 Hughes (D-3) SW  
4 Hughes (C-4) NW  
5 Hughes (C-3) NW  
6 Hughes (C-4) SW  
7 Hughes (C-4) SE  
8 Hughes (C-3) SW

HUGHES C-4 NE, AK  
2016



NSN 7540-01-301-6344  
USGS X 25 X 34 X 4 X 5 X 6 X 7 X 8 X 9  
USGS REF. NO. U.S.G.S. X 25 X 34 X 4 X 5 X 6 X 7 X 8 X 9