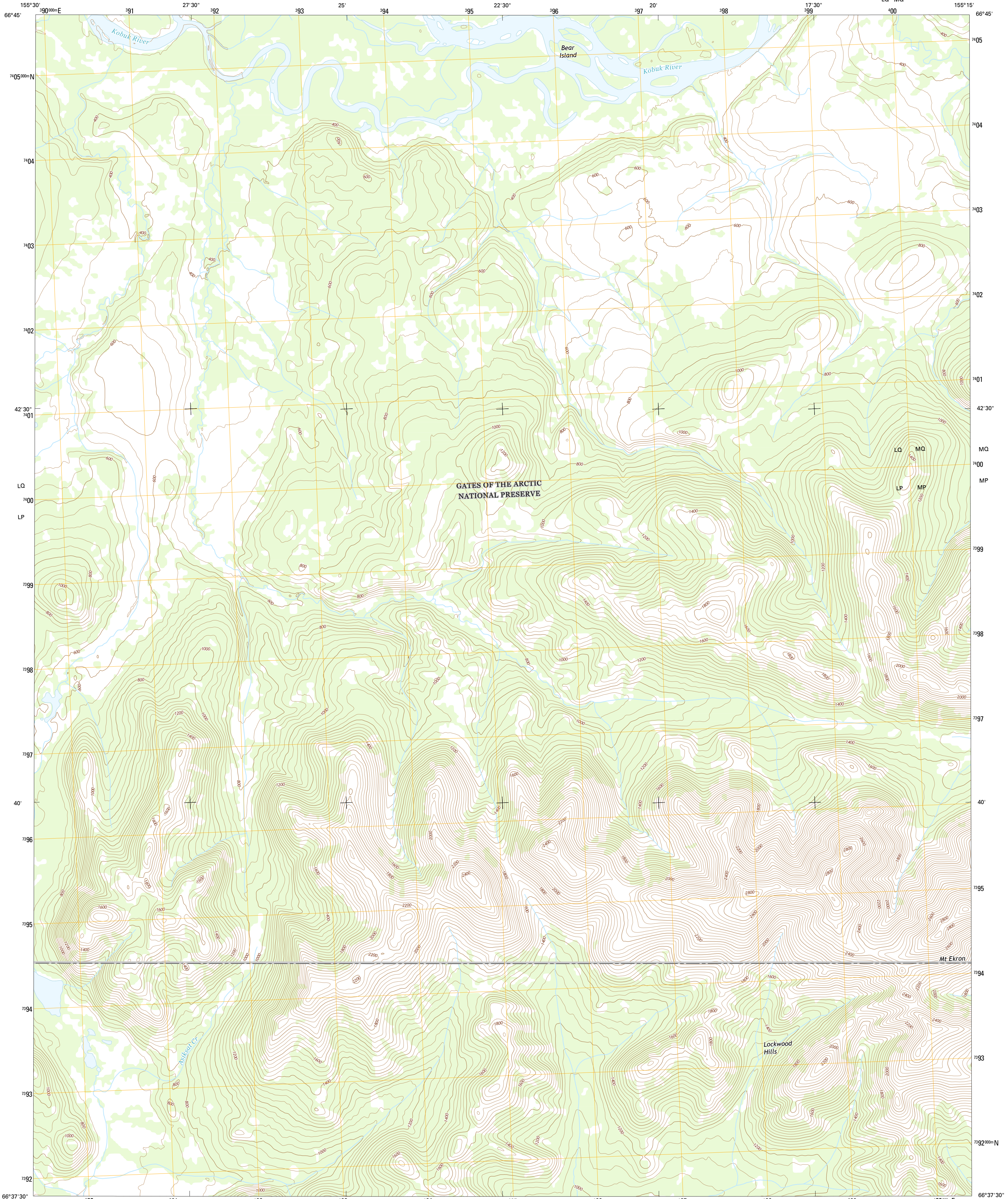




U.S. DEPARTMENT OF THE INTERIOR
U.S. GEOLOGICAL SURVEY



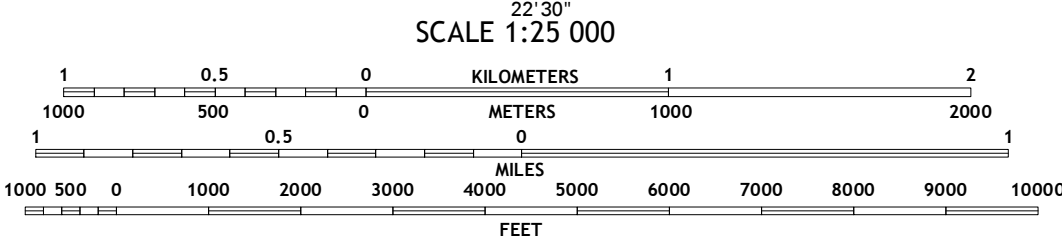
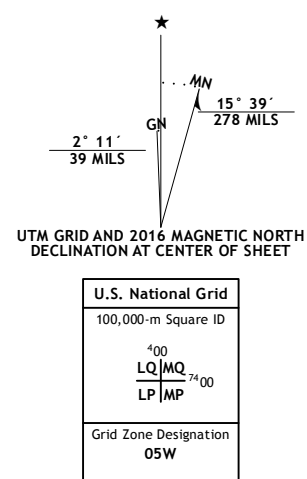
HUGHES C-5 NW QUADRANGLE
ALASKA-NORTHWEST ARCTIC BOROUGH
7.5-MINUTE SERIES



Produced by the United States Geological Survey
North American Datum of 1983 (NAD83)
World Geodetic System of 1984 (WGS84), Projection and
1 000-meter grid: Universal Transverse Mercator, Zone 19W
10 000-foot ticks: Alaska Coordinate System of 1983 (zone 6)

This map is not a legal document. Boundaries may be
generalized for this map scale. Private lands within government
reservations may not be shown. Obtain permission before
entering private lands.

Imagery.....SPOT, 2009 - 2015
Roads.....Alaska Dept. of Transportation, 2014
Names.....GNIS, 2016
Hydrography.....National Hydrography Dataset, 2010
Contours.....National Elevation Dataset, 2016
Boundaries.....Multiple sources; see metadata file, 1990 - 2016
Public Land Survey System.....BLM, 2006 - 2008
Wetlands.....FWS National Wetlands Inventory 1977 - 2014



CONTOUR INTERVAL 40 FEET
NORTH AMERICAN VERTICAL DATUM OF 1988

This map was produced to conform with the
National Geospatial Program US Topo Product Standard, 2011.
A metadata file associated with this product is draft version 0.6.18



QUADRANGLE LOCATION

| ROAD CLASSIFICATION | |
|---------------------|------------------|
| | Expressway |
| | Secondary Hwy |
| | Ramp |
| | Interstate Route |
| | Local Connector |
| | Local Road |
| | 4WD |
| | US Route |
| | State Route |

| | | | | | | | | |
|-------------------|---|---|-------------------|---|---|-----------------------|---|--|
| 1 | 2 | 3 | 4 | 5 | 6 | 7 | 8 | |
| 1 Hughes (D-6) SE | | | 2 Hughes (D-5) SW | | | 3 Hughes (D-5) SE | | |
| 4 Hughes (C-6) NE | | | 5 Hughes (C-5) NE | | | 6 Hughes (C-6) SE | | |
| 7 Hughes (C-5) SW | | | 8 Hughes (C-5) SE | | | ADJOINING QUADRANGLES | | |

HUGHES C-5 NW, AK
2016

