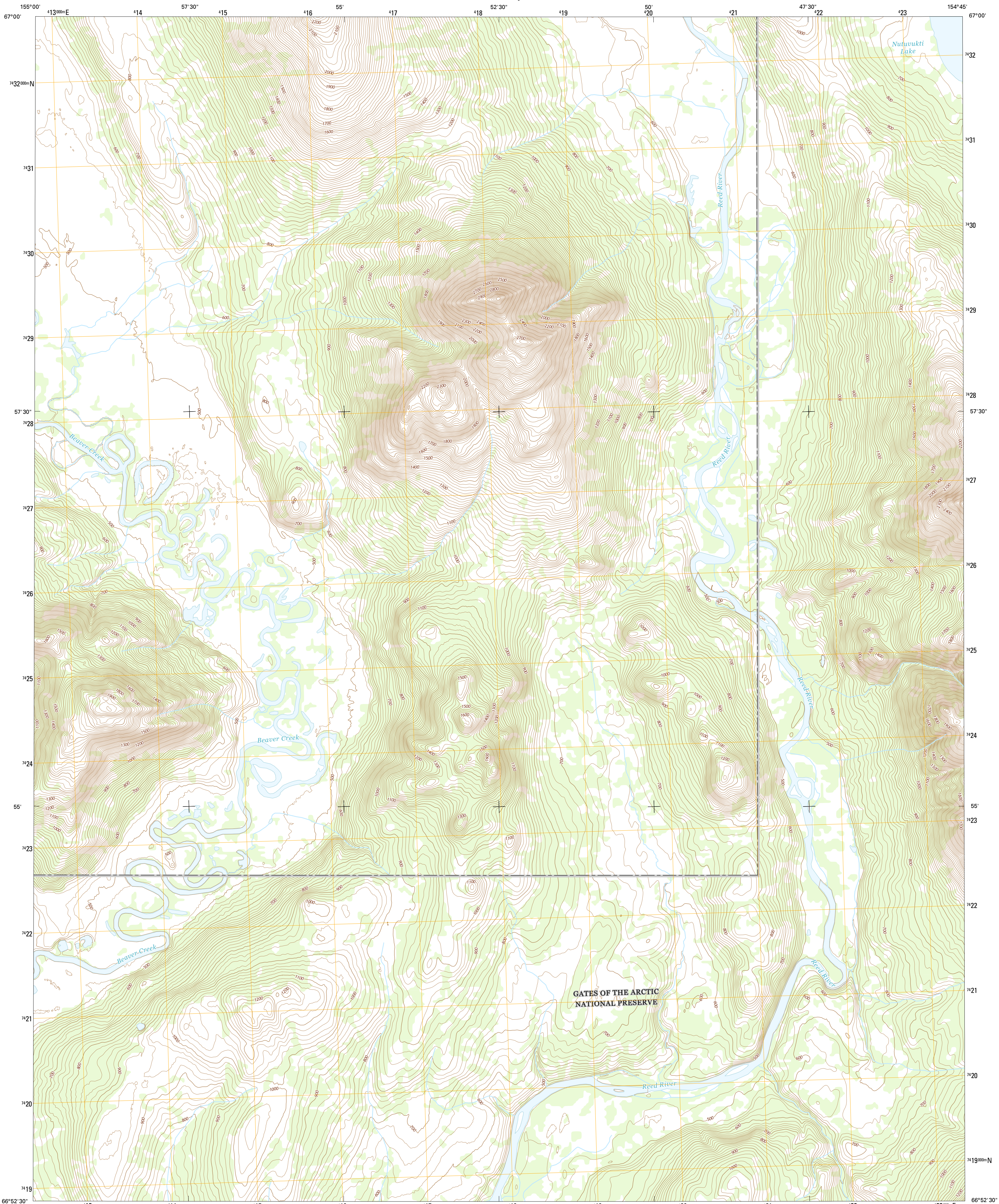




U.S. DEPARTMENT OF THE INTERIOR
U.S. GEOLOGICAL SURVEY



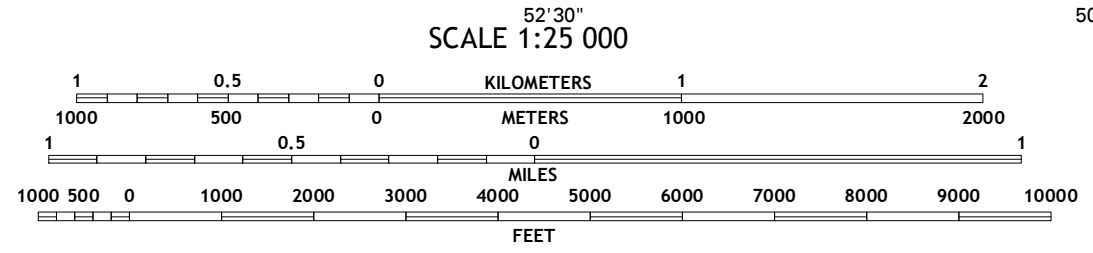
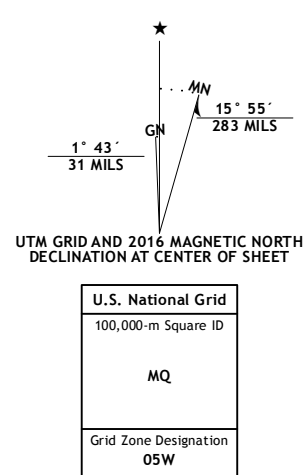
HUGHES D-4 NW QUADRANGLE
ALASKA-NORTHWEST ARCTIC BOROUGH
7.5-MINUTE SERIES



Produced by the United States Geological Survey
North American Datum of 1983 (NAD83)
World Geodetic System of 1984 (WGS84). Projection and
1 000-meter grid: Universal Transverse Mercator, Zone 19W
10 000-foot ticks: Alaska Coordinate System of 1983 (zone 6)

This map is not a legal document. Boundaries may be
generalized for this map scale. Private lands within government
reservations may not be shown. Obtain permission before
entering private lands.

Imagery.....SPOTD, 2009 - 2015
Roads.....Alaska Dept. of Transportation, 2014
Names.....GNIS, 2016
Hydrography.....National Hydrography Dataset, 2010
Contours.....National Elevation Dataset, 2015
Boundaries.....Multiple sources; see metadata file, 1950 - 2016
Public Land Survey System.....BLM, 2006 - 2008
Wetlands.....FWS National Wetlands Inventory 1977 - 2014



ROAD CLASSIFICATION

Expressway	Local Connector	State Route
Secondary Hwy	Local Road	
Ramp	4WD	
Interstate Route	US Route	

ADJOINING QUADRANGLES

1	2	3
4	5	6
7	8	9

1 Survey Pass (A-5) SE
2 Survey Pass (A-4) SW
3 Survey Pass (A-4) SE
4 Hughes (D-5) NE
5 Hughes (D-4) NE
6 Hughes (D-5) SE
7 Hughes (D-4) SE
8 Hughes (D-4) SE

HUGHES D-4 NW, AK
2016

