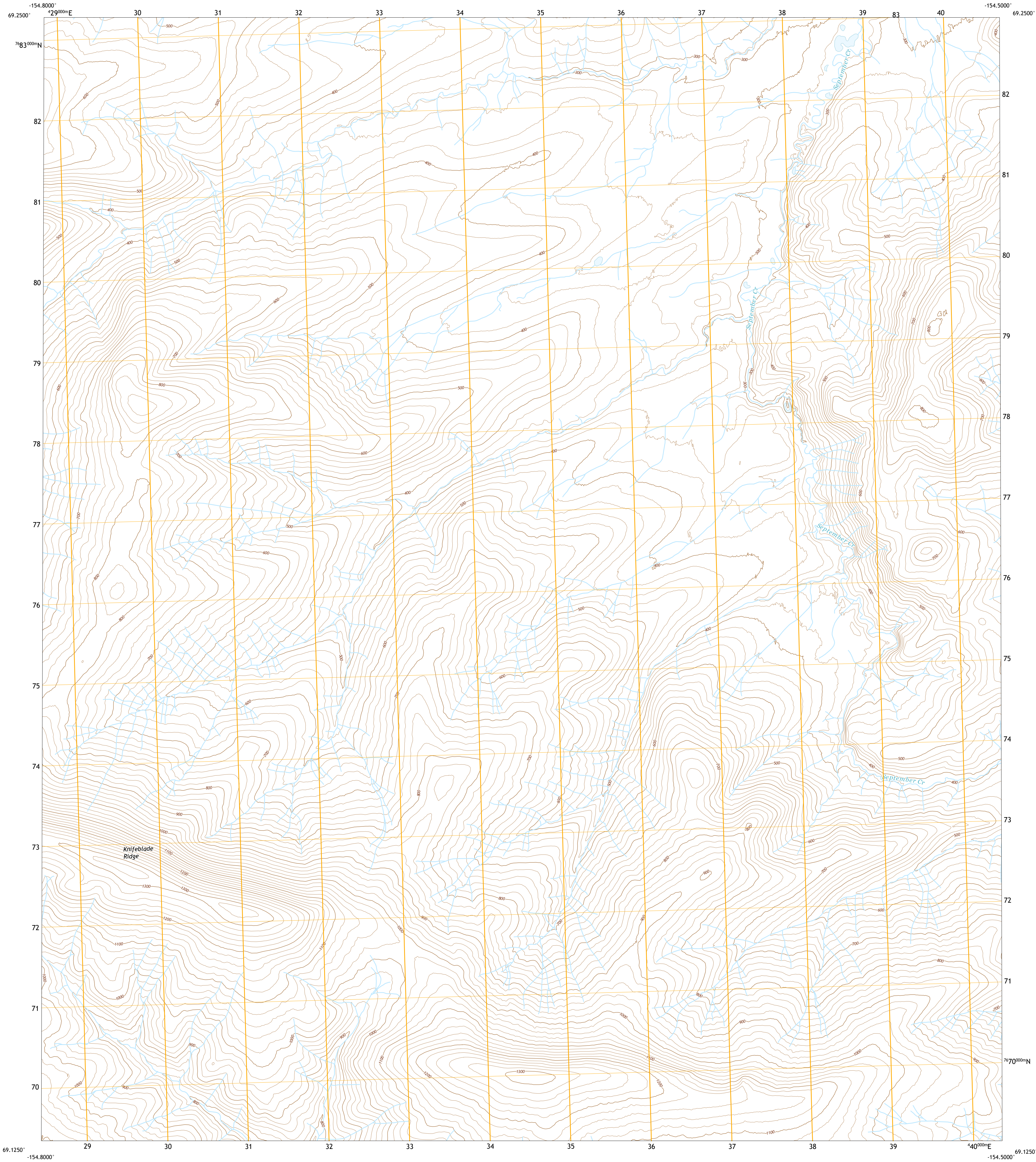




U.S. DEPARTMENT OF THE INTERIOR
U.S. GEOLOGICAL SURVEY

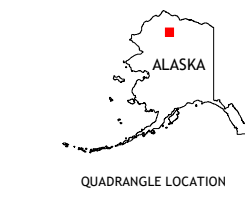
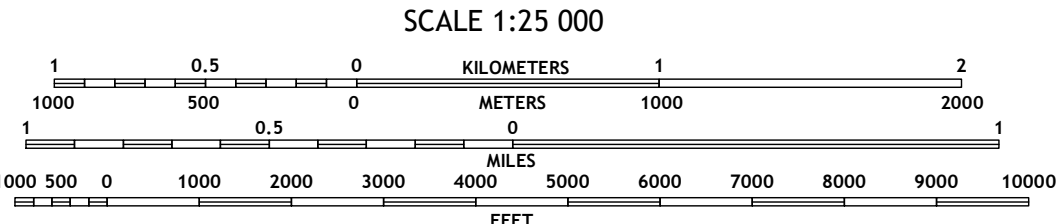
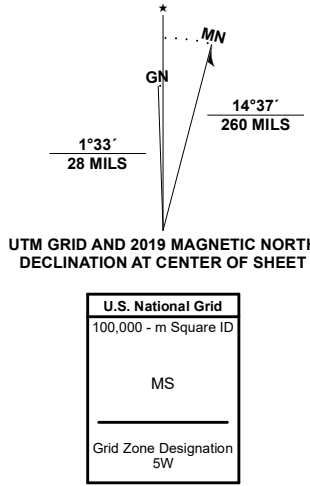


IKPIKPUK RIVER A-3 NW QUADRANGLE
ALASKA - NORTH SLOPE BOROUGH
7.5-MINUTE SERIES



Produced by the United States Geological Survey

North American Datum of 1983 (NAD83)
World Geodetic System of 1984 (WGS84). Projection and
1 000-meter grid/Universal Transverse Mercator, Zone 5W
This map is not a legal document. Boundaries may be
generalized for this map scale. Private lands within government
reservations may not be shown. Obtain permission before
entering private lands.
Imagery.....SPOT, © September 2008
Roads.....Alaska Dept. of Transportation, Not Available
Names.....GNS, 2000 - 2009
Hydrography.....National Hydrography Dataset, 2004 - 2015
Contours.....National Elevation Dataset, 2019
Boundaries.....Multiple sources; see metadata file 2018 - 2019
Public Land Survey System.....BLM, 2008
Wetlands.....FWS National Wetlands Inventory Not Available



1	2	3
4	5	6
7	8	9

ADJOINING QUADRANGLES

ROAD CLASSIFICATION		
Expressway	Local Connector	
Secondary Hwy	Local Road	
Ramp	4WD	
Interstate Route	US Route	State Route

IKPIKPUK RIVER A-3 NW, AK
2020

