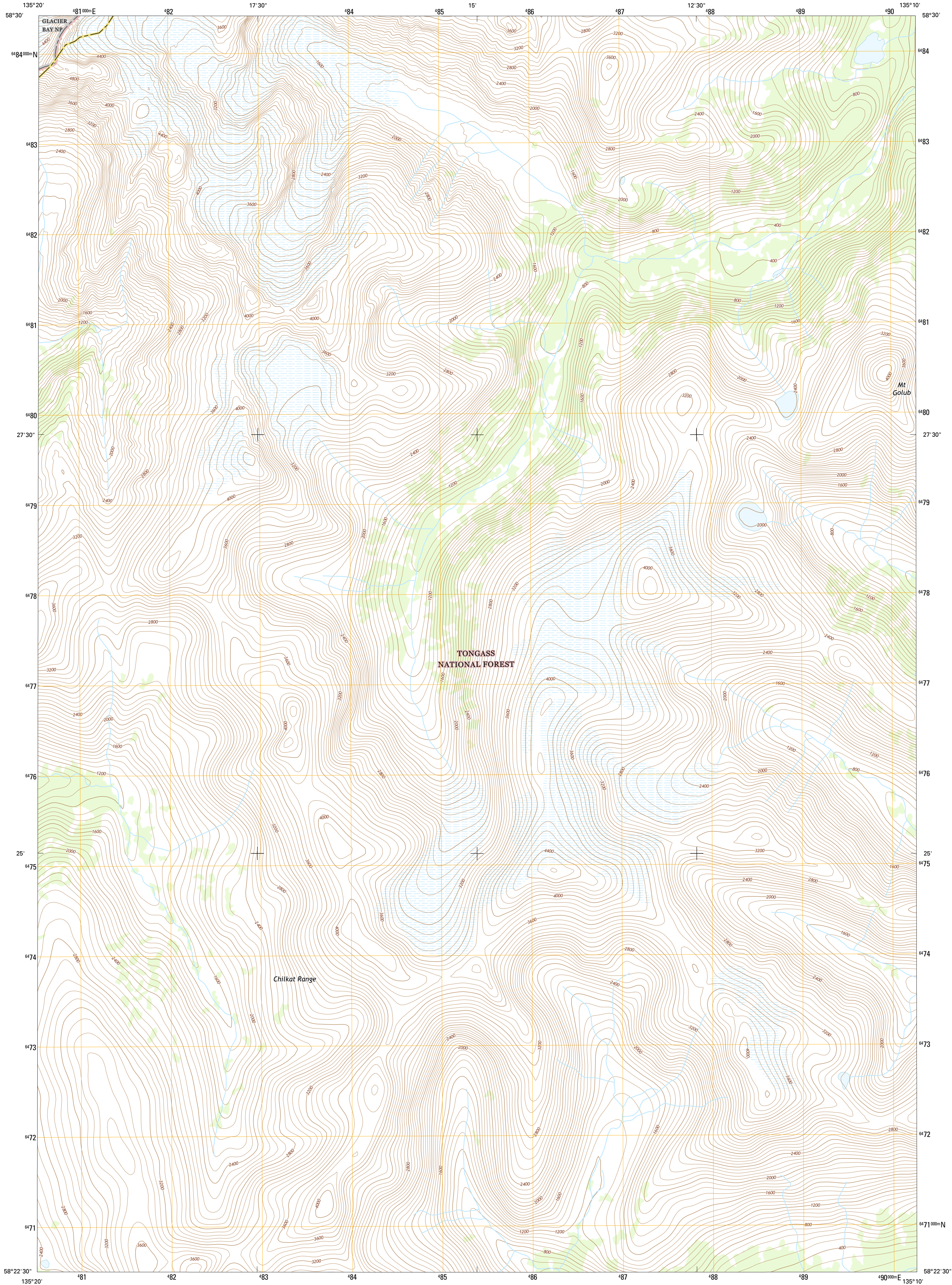




U.S. DEPARTMENT OF THE INTERIOR
U.S. GEOLOGICAL SURVEY



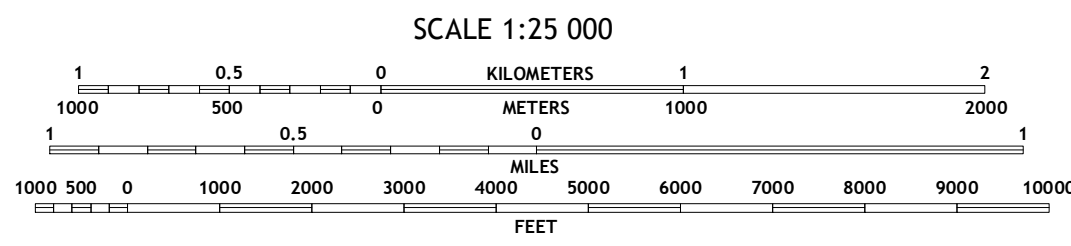
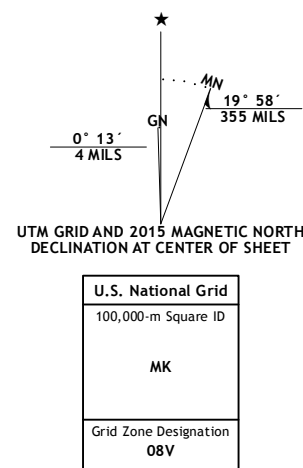
JUNEAU B-4 NW QUADRANGLE
ALASKA
7.5-MINUTE SERIES



Produced by the United States Geological Survey
North American Datum of 1983 (NAD83)
World Geodetic System of 1984 (WGS84). Projection and
1 000-meter grid: Universal Transverse Mercator, Zone 08V

This map is not a legal document. Boundaries may be generalized for this map scale. Private lands within government reservations may not be shown. Obtain permission before entering private lands

Imagery.....SPOT, ©2010
Roads.....Alaska Dept. of Transportation, 2013
Roads within US Forest Service Lands.....FS Topo Data with limited Forest Service updates, 2012 - 2015
Names.....GNIS, 2015
Hydrography.....National Hydrography Dataset, 2010
Contours.....National Elevation Dataset, 2015
Boundaries.....Multiple sources; see metadata file, 1950 - 2015
Public Land Survey System.....BLM, 2006 - 2008



ROAD CLASSIFICATION

| | |
|------------------|-------------------------|
| Expressway | Local Connector |
| Secondary Hwy | Local Road |
| Ramp | 4WD |
| Interstate Route | US Route |
| FS Primary Route | FS Passenger Route |
| | FS High Clearance Route |
| | State Route |

ADJOINING QUADRANGLES

| | | |
|-------------------|-------------------|-------------------|
| 1 Juneau (C-5) SE | 2 Juneau (C-4) SW | 3 Juneau (C-4) SE |
| 4 Juneau (B-5) NE | 5 Juneau (B-4) NE | 6 Juneau (B-5) SE |
| 7 Juneau (B-4) SW | 8 Juneau (B-4) SE | |

Check with local Forest Service unit for current travel conditions and restrictions.

JUNEAU B-4 NW, AK
2015

