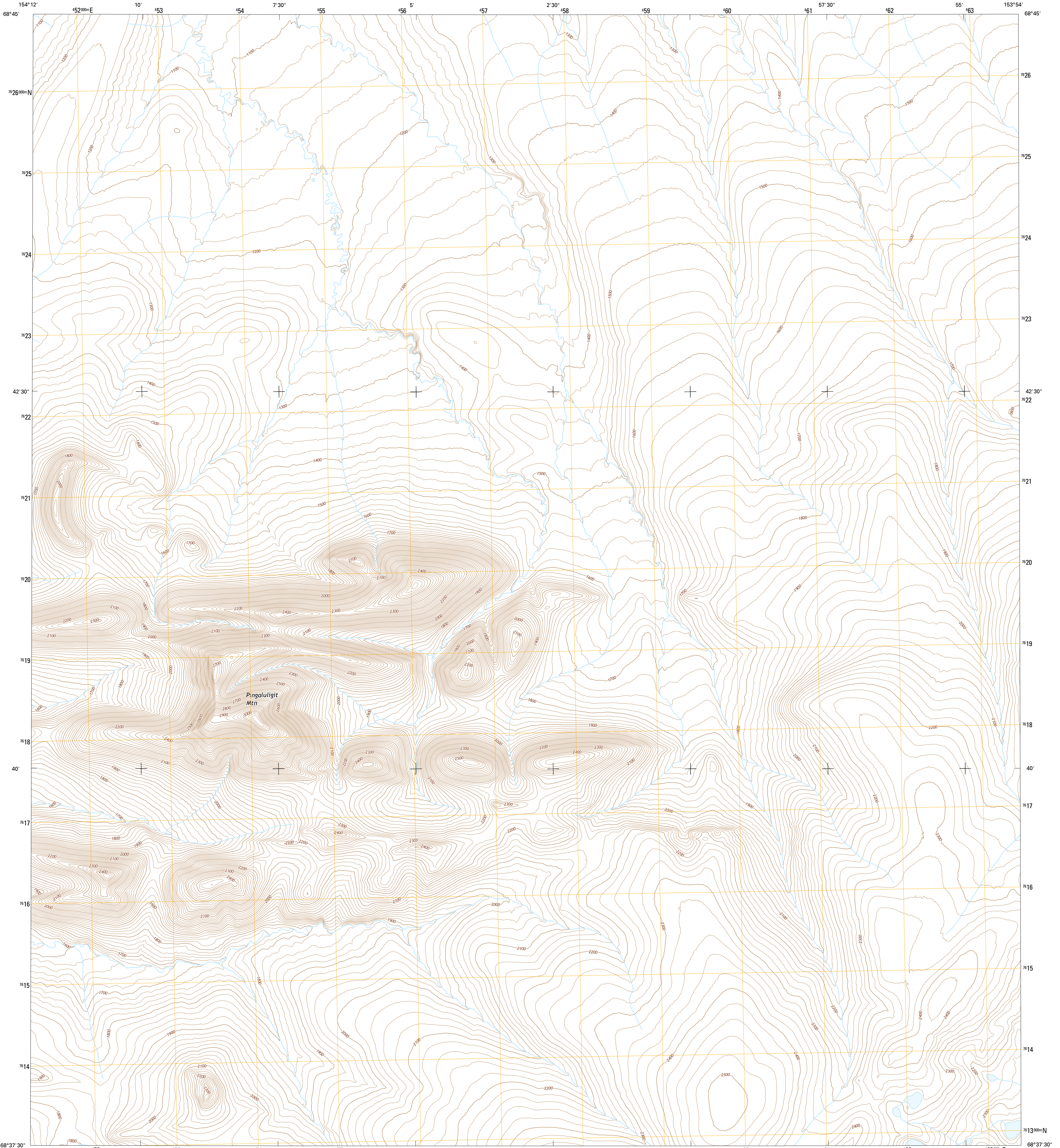




U.S. DEPARTMENT OF THE INTERIOR
U.S. GEOLOGICAL SURVEY



KILLIK RIVER C-2 NW QUADRANGLE
ALASKA-NORTH SLOPE BOROUGH
7.5-MINUTE SERIES

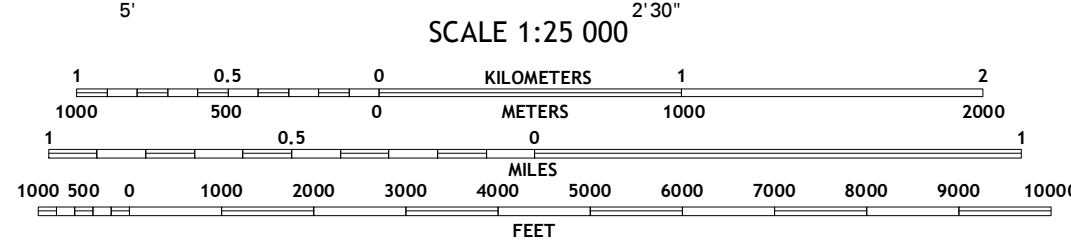
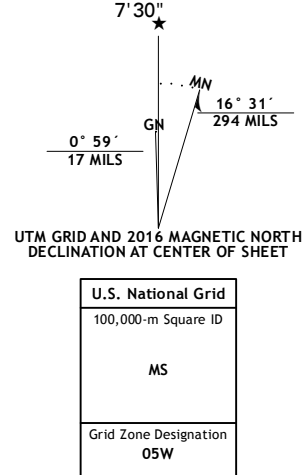


Produced by the United States Geological Survey

North American Datum of 1983 (NAD83)
World Geodetic System of 1984 (WGS84). Projection and
1000-meter grid: Universal Transverse Mercator, Zone 05W
10 000-foot ticks: Alaska Coordinate System of 1983 (Zone 5)

This map is not a legal document. Boundaries may be
generalized for this map scale. Private lands within government
reservations may not be shown. Obtain permission before
entering private lands.

Imagery.....SPOT, 2009 - 2015
Roads.....Alaska Dept. of Transportation, 2014
Names.....GNIS, 2016
Hydrography.....National Hydrography Dataset, 2008
Contours.....National Elevation Dataset, 2015
Boundaries.....Multiple sources; see metadata file, 1950 - 2016
Public Land Survey System.....BLM, 2006 - 2008
Wetlands.....FWS National Wetlands Inventory 1977 - 2014

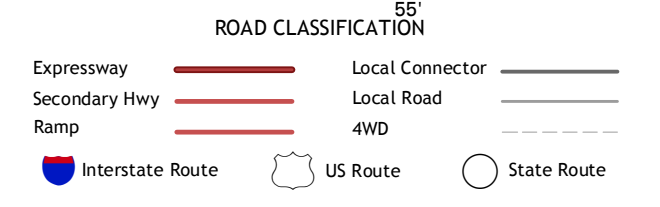


CONTOUR INTERVAL 20 FEET
NORTH AMERICAN VERTICAL DATUM OF 1988

This map was produced to conform with the
National Geospatial Program US Topo Product Standard, 2011.
A metadata file associated with this product is draft version 0.6.18



QUADRANGLE LOCATION

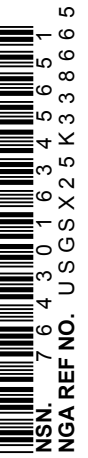


1	2	3
4	5	6
7	8	9

ADJOINING QUADRANGLES

- 1 Killik River (D-3) SE
- 2 Killik River (D-2) SW
- 3 Killik River (D-2) SE
- 4 Killik River (C-3) NE
- 5 Killik River (C-2) NE
- 6 Killik River (C-3) SE
- 7 Killik River (C-2) SE
- 8 Killik River (C-2) SE

KILLIK RIVER C-2 NW, AK
2016



USGS REF. NO. 1:25,000-5-3-6-5