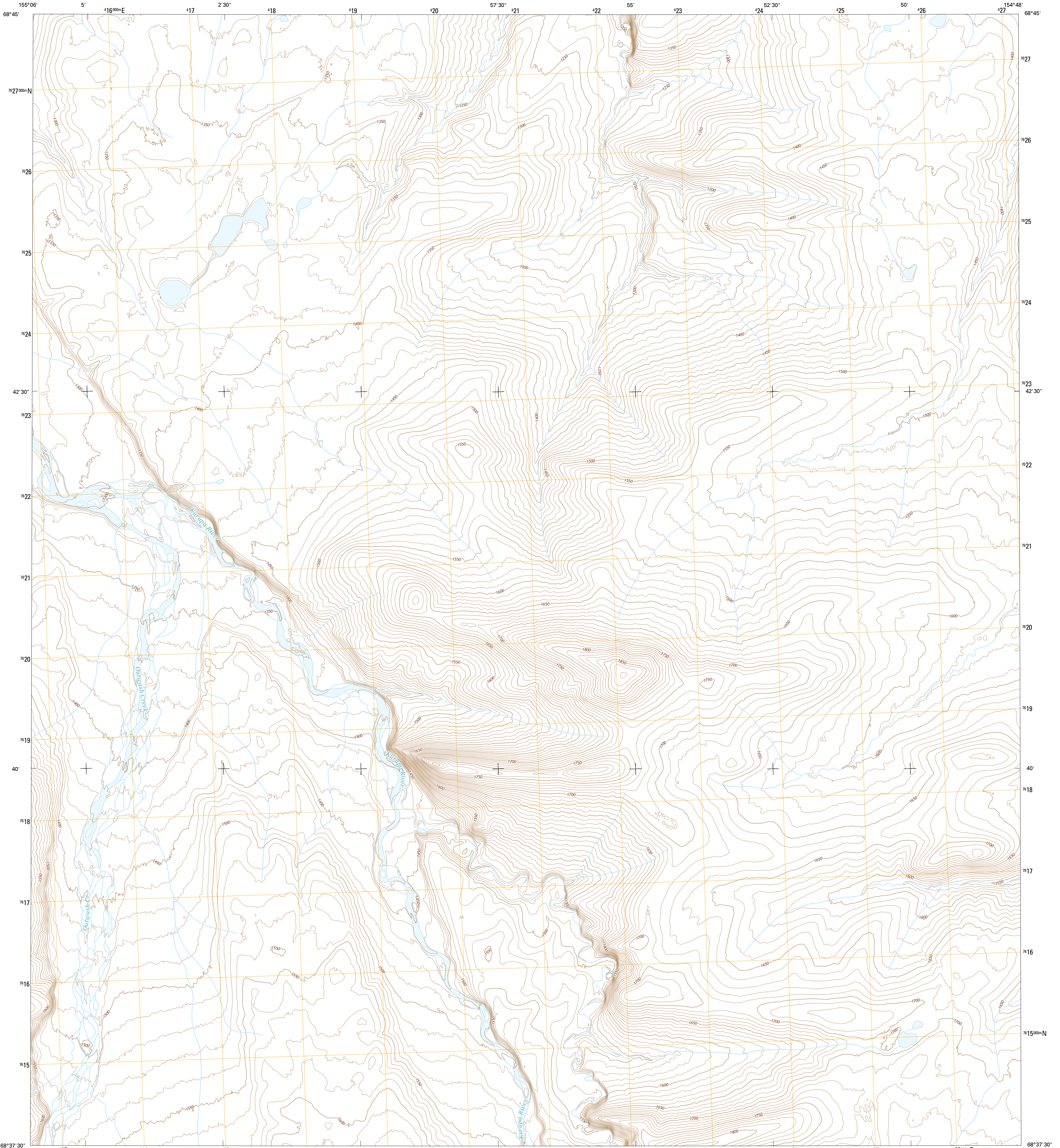




U.S. DEPARTMENT OF THE INTERIOR  
U.S. GEOLOGICAL SURVEY



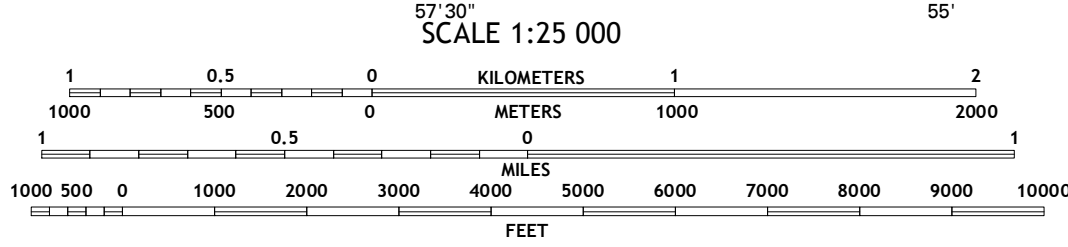
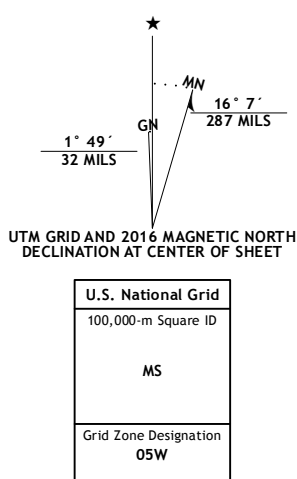
KILLIK RIVER C-4 NE QUADRANGLE  
ALASKA-NORTH SLOPE BOROUGH  
7.5-MINUTE SERIES



Produced by the United States Geological Survey  
North American Datum of 1983 (NAD83)  
World Geodetic System of 1984 (WGS84). Projection and  
1 000-meter grid: Universal Transverse Mercator, Zone 19W  
10 000-foot ticks: Alaska Coordinate System of 1983 (zone 5)

This map is not a legal document. Boundaries may be  
generalized for this map scale. Private lands within government  
reservations may not be shown. Obtain permission before  
entering private lands.

Imagery..... SPOT, 2009 - 2015  
Roads..... Alaska Dept. of Transportation, 2014  
Names..... GNIS, 2016  
Hydrography..... National Hydrography Dataset, 2008  
Contours..... National Elevation Dataset, 2015  
Boundaries..... Multiple sources; see metadata file, 1950 - 2016  
Public Land Survey System..... BLM, 2006 - 2008  
Wetlands..... FWS National Wetlands Inventory 1977 - 2014

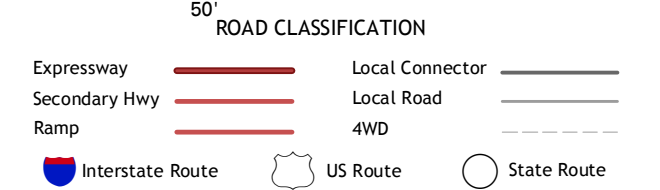


CONTOUR INTERVAL 10 FEET  
NORTH AMERICAN VERTICAL DATUM OF 1988

This map was produced to conform with the  
National Geospatial Program US Topo Product Standard, 2011.  
A metadata file associated with this product is draft version 0.6.18



QUADRANGLE LOCATION



1	2	3
4	5	6
7	8	9

ADJOINING QUADRANGLES

1 Killik River (D-4) SW  
2 Killik River (D-4) SE  
3 Killik River (D-3) SW  
4 Killik River (C-4) NW  
5 Killik River (C-3) NW  
6 Killik River (C-4) SW  
7 Killik River (C-4) SE  
8 Killik River (C-3) SW

KILLIK RIVER C-4 NE, AK  
2016



USGS 2503368  
NGA REF NO. U.S.G.S. 2503368