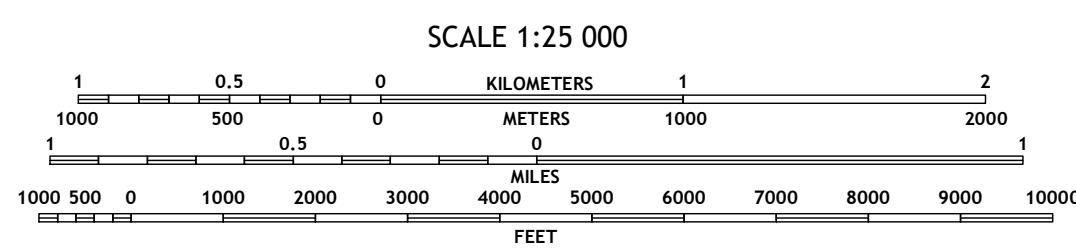
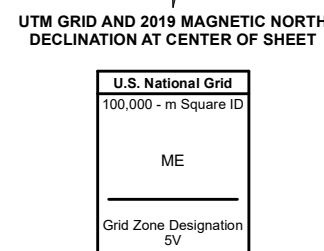
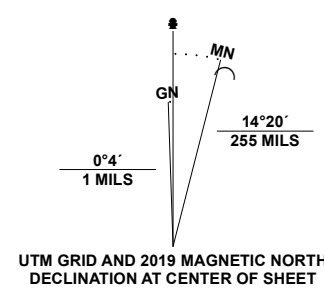


Produced by the United States Geological Survey

North American Datum of 1983 (NAD83)
World Geodetic System of 1984 (WGS84) - Projection and
1 000-meter grid/Universal Transverse Mercator, Zone 5V
This map is not a legal document. Boundaries may be
generalized for this map scale. Private lands within government
reservations may not be shown. Obtain permission before
entering private lands.

Imagery.....SPOT, © May 2016 - June 2019
Roads.....Alaska Dept. of Transportation, Not Available
Names.....GNIS, 1981
Hydrography.....National Hydrography Dataset, 2004 - 2018
Contours.....National Elevation Dataset, 2021
Boundaries.....Multiple sources; see metadata file 2013 - 2021
Public Land Survey System.....BLM, 2008
Wetlands.....FWS National Wetlands Inventory 1978 - 1979



CONTOUR INTERVAL 40 FEET
NORTH AMERICAN VERTICAL DATUM OF 1988
This map was produced to conform with the
National Geospatial Program US Topo Product Standard.



1	2	3
4	5	6
7	8	

ADJOINING QUADRANGLES

- 1 Kodiak D-4 NW
- 2 Kodiak D-4 NE
- 3 Kodiak D-3 NW
- 4 Kodiak D-3 SW
- 5 Kodiak D-3 SE
- 6 Kodiak C-4 NW
- 7 Kodiak C-4 NE
- 8 Kodiak C-3 NW

