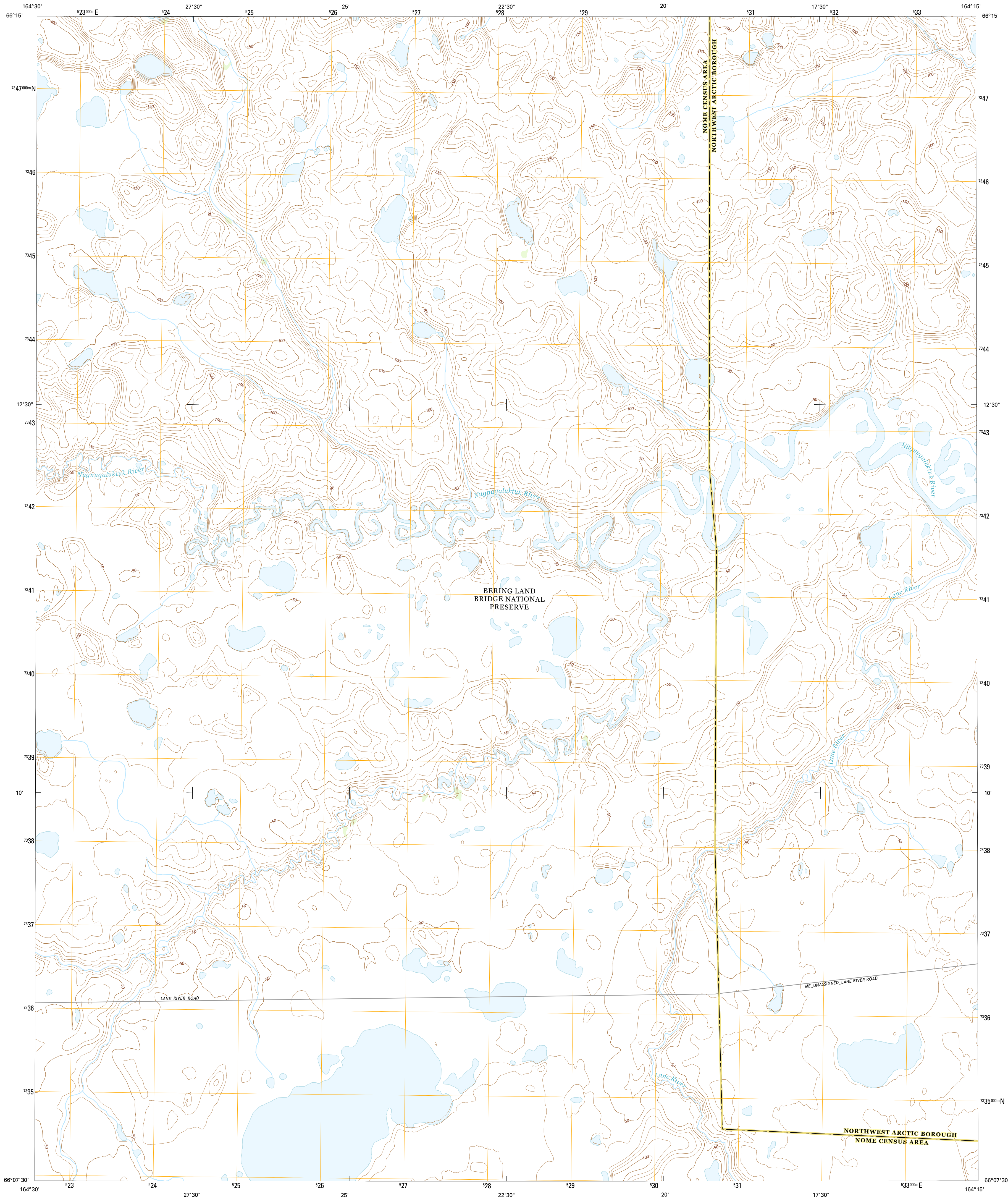




U.S. DEPARTMENT OF THE INTERIOR  
U.S. GEOLOGICAL SURVEY



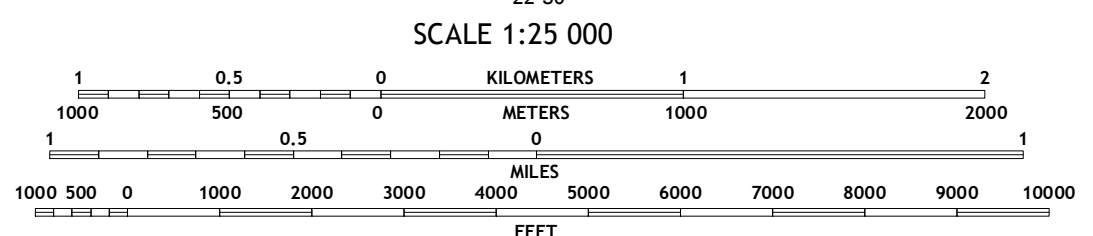
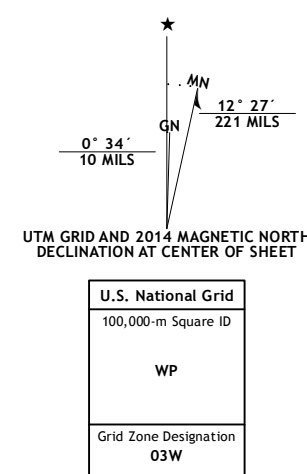
KOTZEBUE A-5 NW QUADRANGLE  
ALASKA  
7.5-MINUTE SERIES



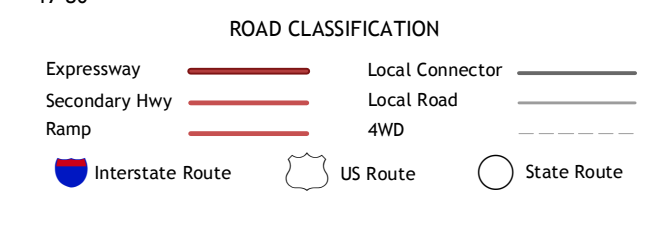
Produced by the United States Geological Survey  
North American Datum of 1983 (NAD83)  
World Geodetic System of 1984 (WGS84). Projection and  
1 000-meter grid: Universal Transverse Mercator, Zone 03W

This map is not a legal document. Boundaries may be generalized  
for this map scale. Private lands within government reservations  
may not be shown. Obtain permission before entering private lands

Imagery.....SPOT, ©2009  
Roads.....Alaska Dept. of Transportation, 2013  
Names.....GNIS, 2013  
Hydrography.....National Hydrography Dataset, 2009  
Contours.....National Elevation Dataset, 2013  
Boundaries.....Multiple sources; see metadata file, 1950 - 2012  
Public Land Survey System.....BLM, 2006 - 2008



QUADRANGLE LOCATION



1	2	3
4	5	6
7	8	

ADJOINING QUADRANGLES

- 1 Kotzebue (B-6) SE
- 2 Kotzebue (B-5) SW
- 3 Kotzebue (B-5) SE
- 4 Kotzebue (A-6) NE
- 5 Kotzebue (A-5) NE
- 6 Kotzebue (A-6) SE
- 7 Kotzebue (A-5) SW
- 8 Kotzebue (A-5) SE

KOTZEBUE A-5 NW, AK  
2014

