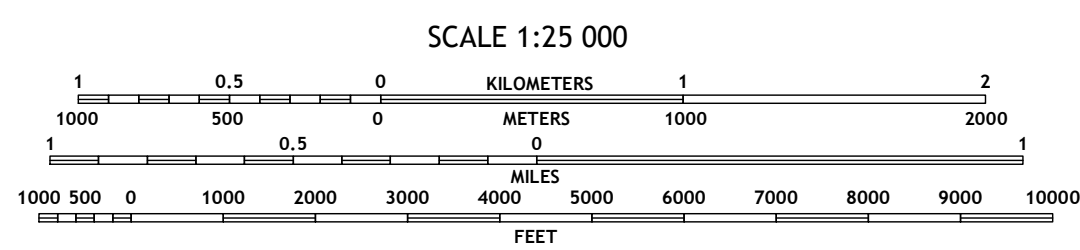
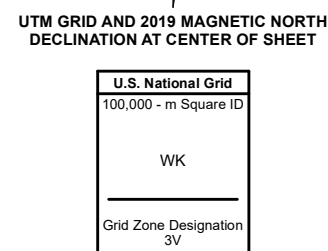
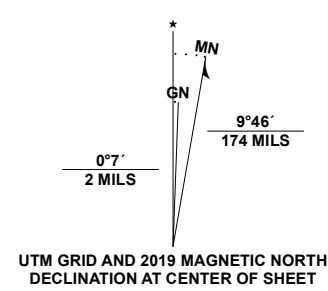


Produced by the United States Geological Survey

North American Datum of 1983 (NAD83)
World Geodetic System of 1984 (WGS84). Projection and
1 000-meter grid/Universal Transverse Mercator, Zone 3V
This map is not a legal document. Boundaries may be
generalized for this map scale. Private lands within government
reservations may not be shown. Obtain permission before
entering private lands.

Imagery.....SPOT, © May 2011
Roads.....Alaska Dept. of Transportation, Not Available
Names.....GNS, 1981 - 2011
Hydrography.....National Hydrography Dataset, 2002 - 2018
Contours.....National Elevation Dataset, 2019
Boundaries.....Multiple sources; see metadata file 2018 - 2019
Public Land Survey System.....BLM, 2008
Wetlands.....FWS National Wetlands Inventory 1980

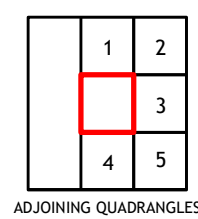


CONTOUR INTERVAL 10 FEET
NORTH AMERICAN VERTICAL DATUM OF 1988

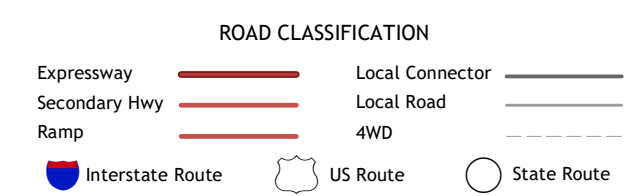
This map was produced to conform with the
National Geospatial Program US Topo Product Standard, 2011.
A metadata file associated with this product is draft version 0.6.17



QUADRANGLE LOCATION



1 Kwiguk D-6 NW
2 Kwiguk D-6 NE
3 Kwiguk D-6 SE
4 Kwiguk C-6 NW
5 Kwiguk C-6 NE



KWIGUK D-6 SW, AK
2020

