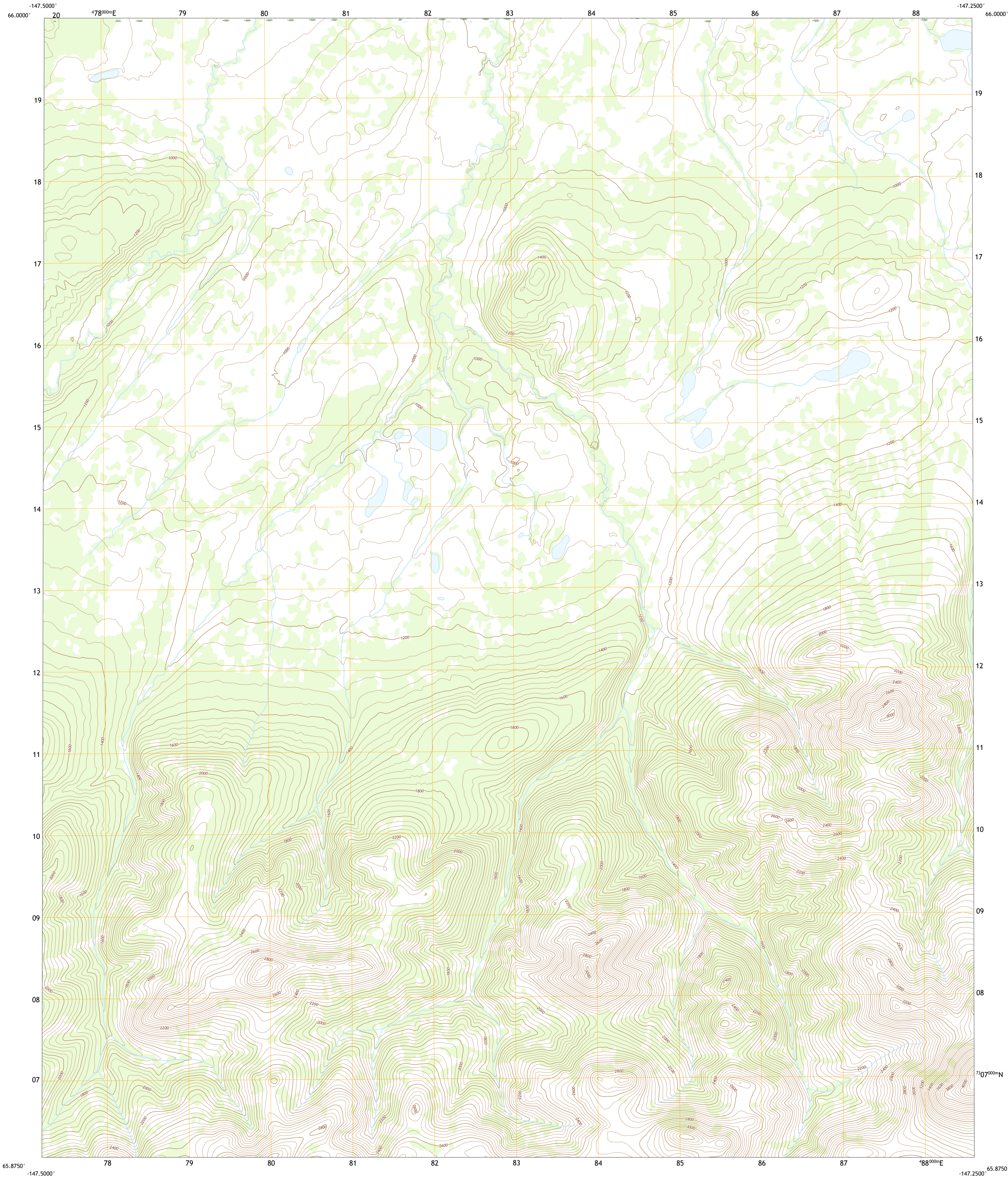




U.S. DEPARTMENT OF THE INTERIOR
U.S. GEOLOGICAL SURVEY



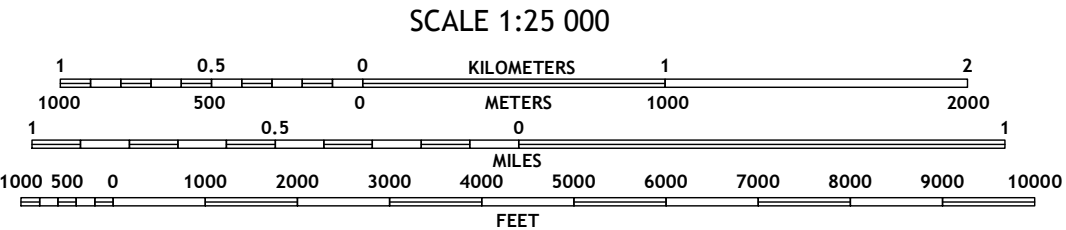
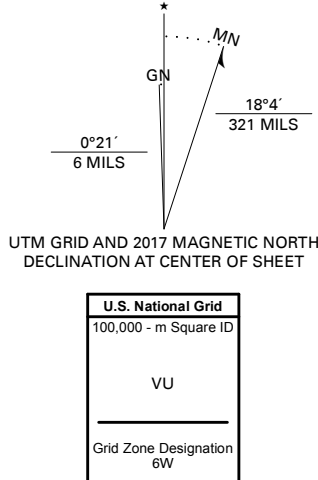
LIVENGOOD D-1 NW QUADRANGLE
ALASKA - YUKON-KOYUKUK CENSUS AREA
7.5-MINUTE SERIES



Produced by the United States Geological Survey

North American Datum of 1983 (NAD83)
World Geodetic System of 1984 (WGS84) Projection and
1 000-meter grid/Universal Transverse Mercator, Zone 6W
This map is not a legal document. Boundaries may be
generalized for this map scale. Private lands within government
reservations may not be shown. Obtain permission before
entering private lands.

Imagery.....SPOT, © June 2009
Roads.....Alaska Dept. of Transportation, Not Available
Names.....GNIS, Not Available
Hydrography.....National Hydrography Dataset, 2001 - 2015
Contours.....National Elevation Dataset, 2015 - 2016
Boundaries.....Multiple sources: see metadata file 2014 - 2016
Public Land Survey System.....BLM, 2008 - 2017
Wetlands.....FWS National Wetlands Inventory 1978 - 1981

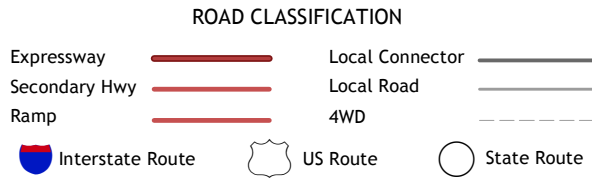


CONTOUR INTERVAL 40 FEET
NORTH AMERICAN VERTICAL DATUM OF 1988
This map was produced to conform with the
National Geospatial Program US Topo Product Standard, 2011.
A metadata file associated with this product is draft version 0.6.17



1	2	3
4	5	6
7	8	9

1 Beaver A-2 SE
2 Beaver A-1 SW
3 Beaver A-1 SE
4 Livengood D-2 NE
5 Livengood D-1 NE
6 Livengood D-2 SE
7 Livengood D-1 SW
8 Livengood D-1 SE



LIVENGOOD D-1 NW, AK
2017

