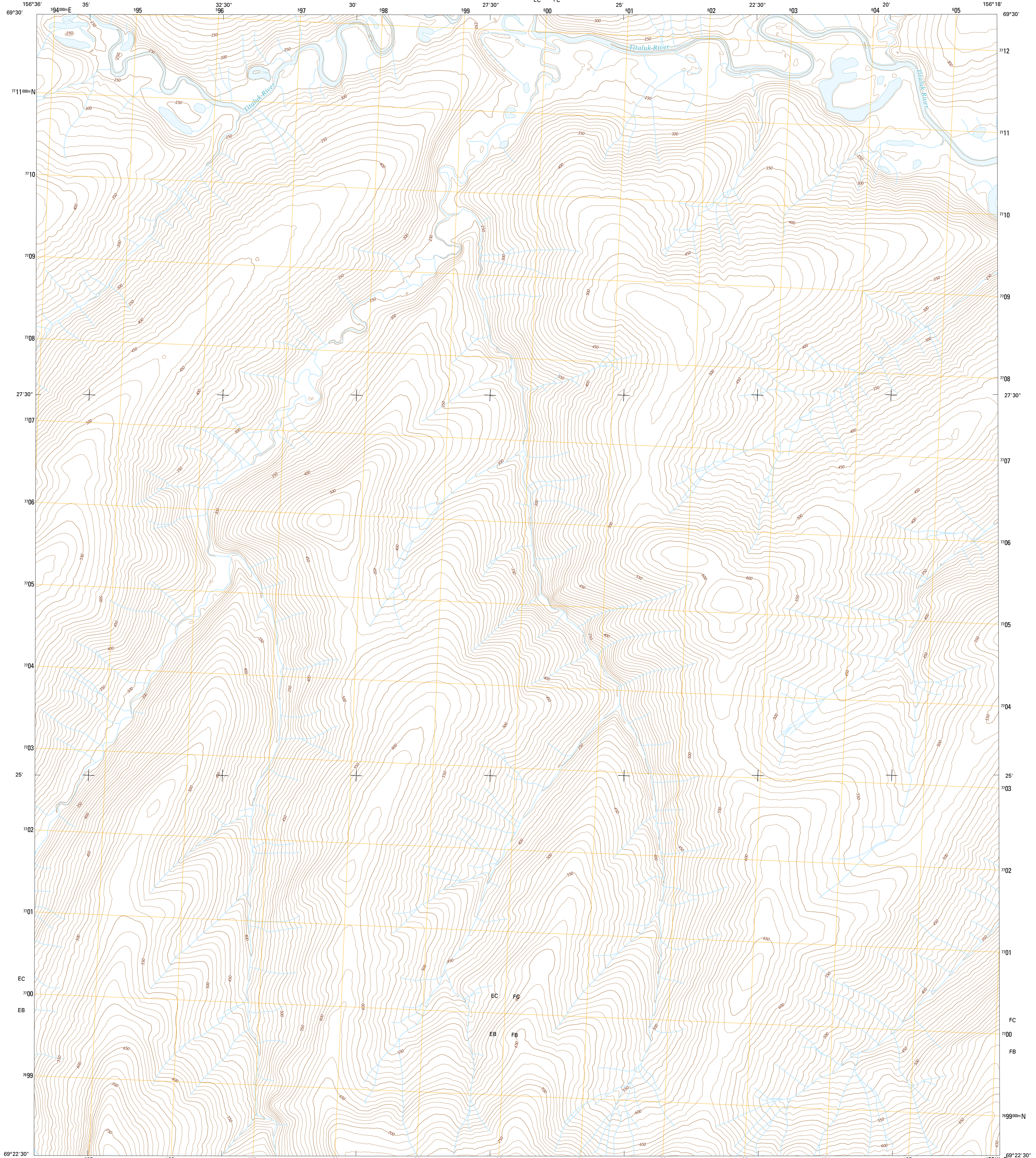




U.S. DEPARTMENT OF THE INTERIOR  
U.S. GEOLOGICAL SURVEY



LOOKOUT RIDGE B-1 NW QUADRANGLE  
ALASKA-NORTH SLOPE BOROUGH  
7.5-MINUTE SERIES

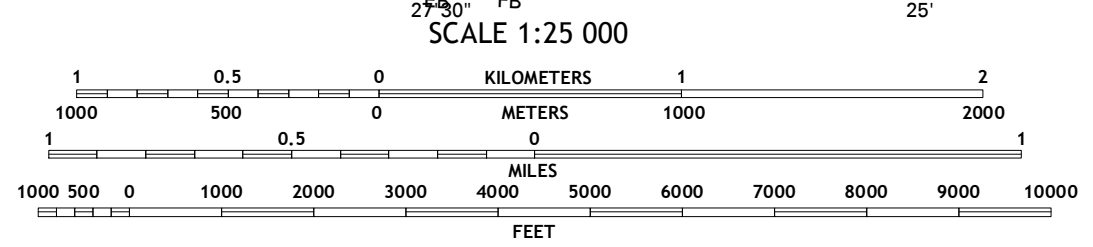
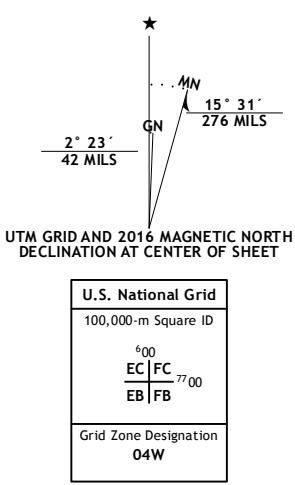


Produced by the United States Geological Survey

North American Datum of 1983 (NAD83)  
World Geodetic System of 1984 (WGS84), Projection and  
1 000-meter grid: Universal Transverse Mercator, Zone 46W  
10 000-foot ticks: Alaska Coordinate System of 1983 (zone 5)

This map is not a legal document. Boundaries may be  
generalized for this map scale. Private lands within government  
reservations may not be shown. Obtain permission before  
entering private lands.

Imagery.....SPOTC, 2009 - 2015  
Roads.....Alaska Dept. of Transportation, 2014  
Names.....GNS, 2016  
Hydrography.....National Hydrography Dataset, 2010  
Contours.....National Elevation Dataset, 2008  
Boundaries.....Multiple sources; see metadata file, 1950 - 2016  
Public Land Survey System.....BLM, 2006 - 2008  
Wetlands.....FWS National Wetlands Inventory 1977 - 2014

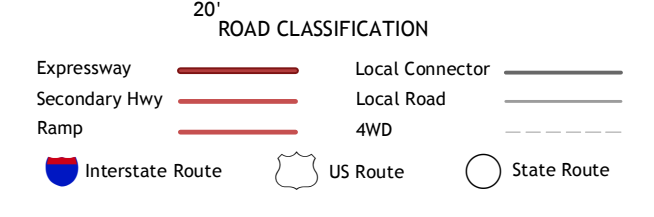


CONTOUR INTERVAL 10 FEET  
NORTH AMERICAN VERTICAL DATUM OF 1988

This map was produced to conform with the  
National Geospatial Program US Topo Product Standard, 2011.  
A metadata file associated with this product is draft version 0.6.18



QUADRANGLE LOCATION



1	2	3
4	5	6
7	8	

1 Lookout Ridge (C-2) SE  
2 Lookout Ridge (C-1) SW  
3 Lookout Ridge (C-1) SE  
4 Lookout Ridge (B-2) NE  
5 Lookout Ridge (B-1) NE  
6 Lookout Ridge (B-2) SE  
7 Lookout Ridge (B-1) SE  
8 Lookout Ridge (B-1) SE

ADJOINING QUADRANGLES

LOOKOUT RIDGE B-1 NW, AK  
2016

